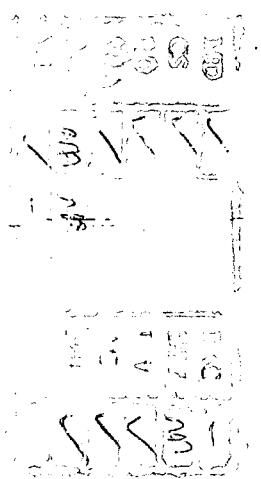




*Alc a side*



Report  Junction

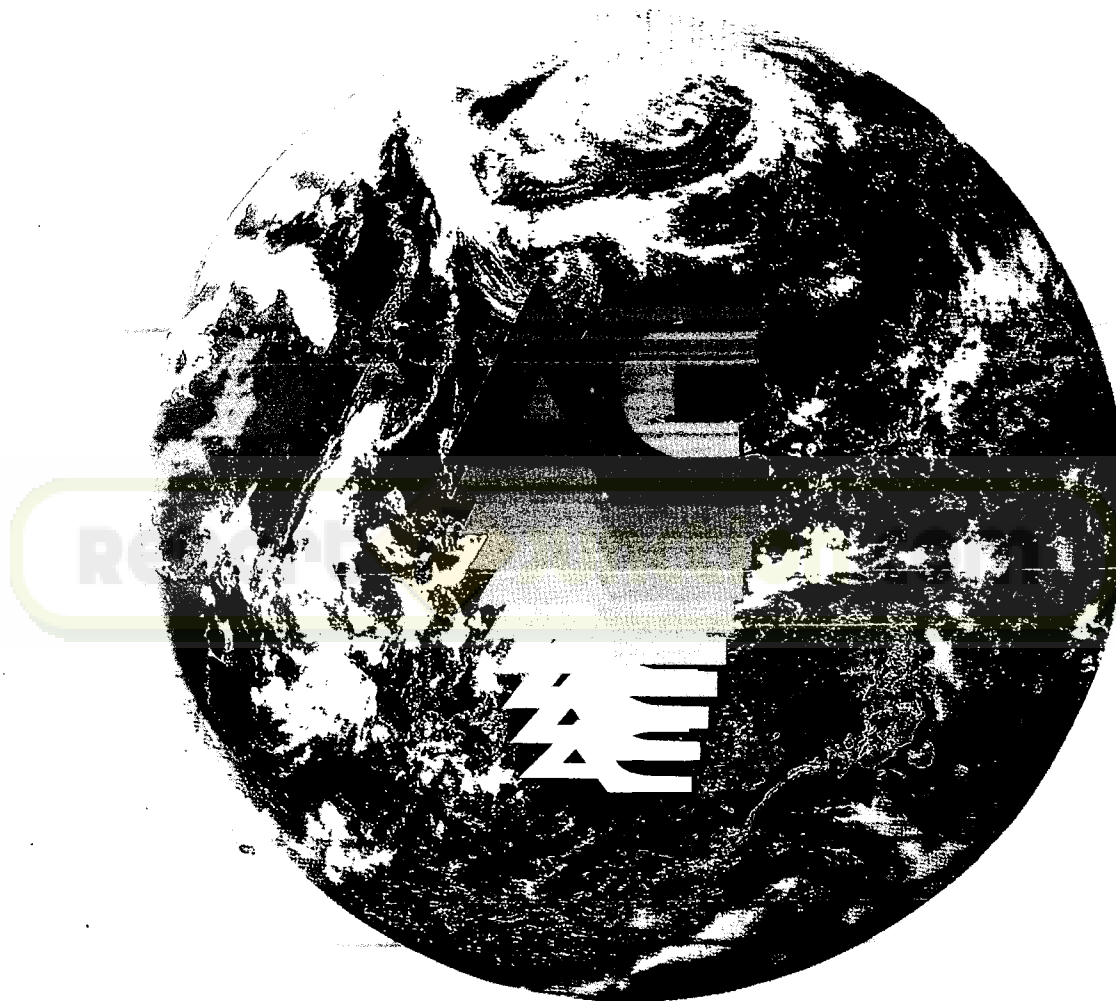
**MARKING  
HEATHER CARRE**

**SD MICH  
BENNER ?**

**AE**

**ACSI**

**ACSI**



THE CONFIGURATION OF OUR LOGO,  
SYMBOLIZES A DYNAMIC EQUILIBRIUM IN ALL SPATIAL DIMENSIONS.  
AS IS EXEMPLIFIED IN THE JUXTA POSITION OF THE LETTERS A, C, E;  
THE COHESIVE DESIGN EMBODYING A UNIFIED PASSION TO PROVIDE HEALTH FOR ALL,  
AND PROJECTING THE MEANING OF ACE - ONE WHO EXCELS.

## **S**haping the Empires of the future.....

*The empires of the future, we know, are built by those who have the will and foresight to shape it now.* With synergy, expansion & consolidation forming the core of our futuristic reality, we have, in a decade of existence, not only pursued the process of making profits and building goodwill but constantly worked towards building a strong foundation for the future.

A move called "Shape your Future" that was launched three years back with a Rs. 60 crores expansion & diversification programme. Joint Ventures in Nepal, Uzbekistan and Mauritius, technology transfer from China, Korea, NII, ICGEB, Dept. of Technology (Govt. of India) & NRDC, commissioning of Bulk Drugs & intermediate/chemical project, Injectable unit, R&D centre and a comprehensive programme for expansion of capacities for formulation, a Venture into new drug delivery system (targetted) in Parenterals - these are some of the pillars of our future empires. Each a sure-fire success, will translate into gainsome business opportunities besides of course making a solid & strong foothold for ACE.

We are not overtly proud or complacent for what we have achieved, rather we believe that Shaping the future is a process that calls for continuous redirection & redefinition of goals and fine tuning with passionate dedication and discernment. In this endeavour, we have established facilities for Cefuroxime Axetil and also propose to set up facilities for other Cephalosporins, Quinolone and other Anti malarial drugs. We also maintain to have a firm footing on drug intermediates i.e. EMME and TEOF - used for production of Quinolone, Chloroquine Phosphate, Norfloxacin etc. In short this breakthrough will give a major strategic boost to ACE by streamlining operations from the very basic stage.

ACE is growing from strength to strength-rapidly marching into the next millennium.

With invaluable support from our esteemed shareholders and other participants, we are virtually guaranteed a great future.

**Ajit Chand Srimal**

## MEETING THE CHALLENGES OF POST GATT ERA

ALL R & D CENTRE -  
AT PAR WITH INTERNATIONAL  
STANDARDS EQUIPPED WITH  
SOPHISTICATED  
INSTRUMENTS & UPDATED TECHNOLOGY



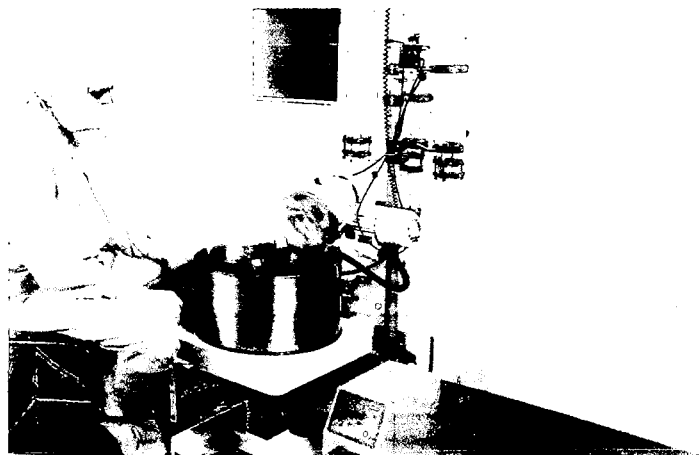
Comprised of several research units where the research is essentially focused on the development of new drug molecules for cardio-pulmonary, renal failures, cerebro-vascular spasm and neoplastic diseases (cancer).

A team of highly academic research associates are working in a congenial environment with freedom for best of productivity.

### ACHIEVEMENT

Import substitutes EMME, TEOF - the basic of quinolones are in an advanced stage of commercialization.





## FOUNDATION FOR THE FUTURE TECHNOLOGY TRANSFER

### LIPOTERICIN - B

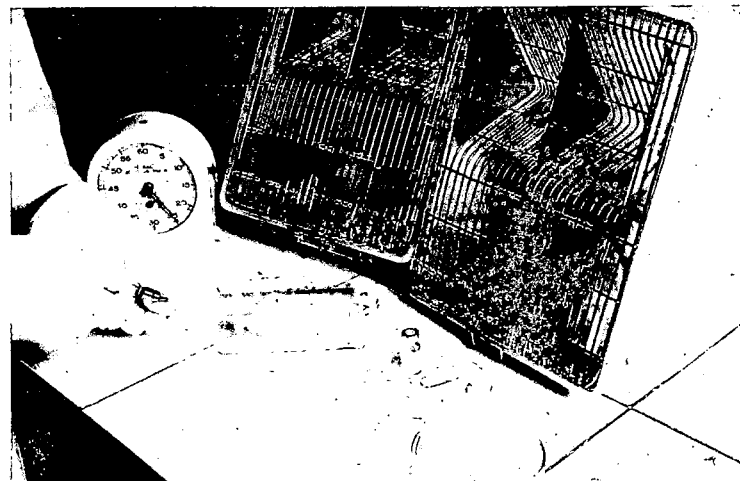
#### LIPOTERICIN - B

Liposomal Amphotericin-B - a high profile life saving therapy with Targeted Drug Delivery System for systemic mycosis (fungal infection) following organ transplant (kidney) and also in Kala-azar (visceral leishmaniasis).



#### OTHER INJECTABLES

Modernized Injection manufacturing plant for vials and ampoules of injectable antibiotics, multivitamins, antimalarials, haemostatics with high quality control system at all steps and provision of testing on animals.



## INDUSTRY ACADEMIA LINKAGE

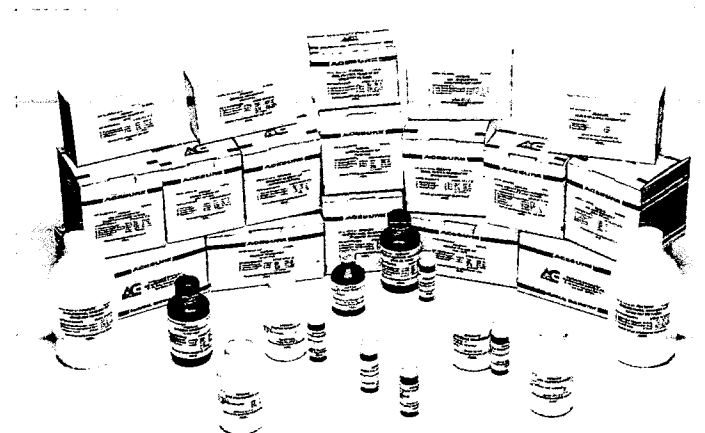
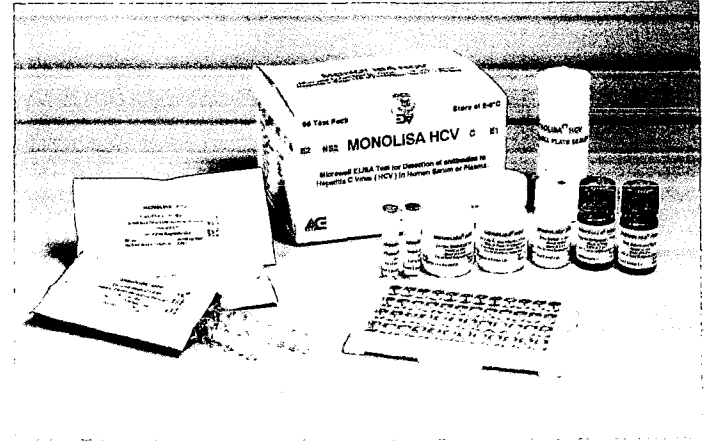
Dr. Ramesh Kumar, Director of Research and Development, ACE Diagnostics & Biotech Ltd., Hyderabad, India, is a member of the Indian Academy of Microbiology, Bangalore. He has been awarded the National Award for Best Scientist in the field of Microbiology in 1998.

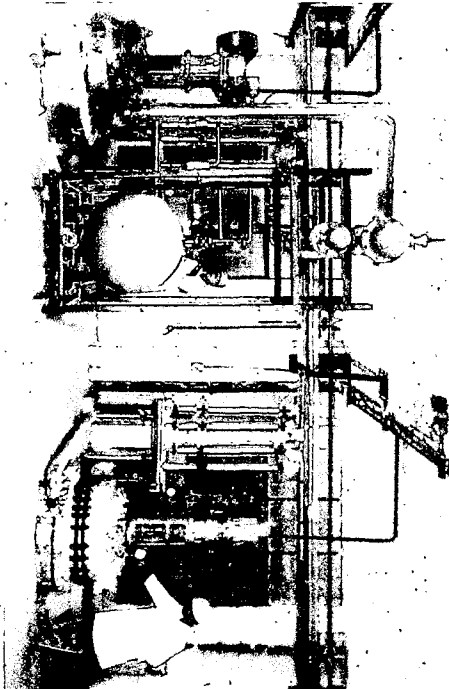
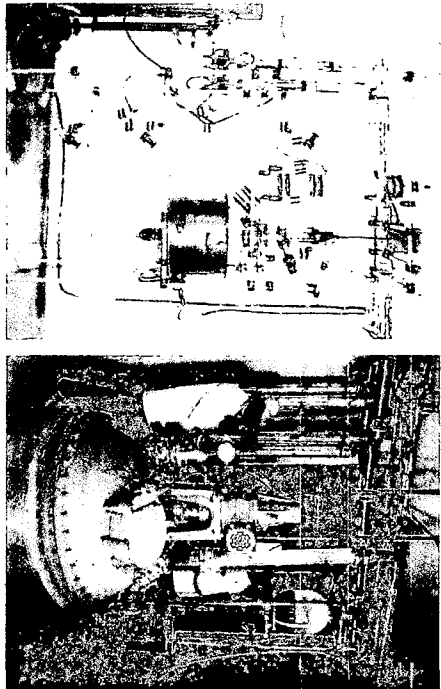
**ADBL** (ACE Diagnostics & Biotech Ltd.) launches HIVue.

A complete Rapid qualitative screening system with a true in built serum control for the detection of antibodies to HIV-1 & HIV-2 & "O" subtype of HIV-1 in whole human blood, serum or plasma.

This is comparatively convenient, accurate and economic than imported one.

**The Ace Sure Range**  
The complete spectrum for pathological tests.





## CONFIDENCE REINFORCED

---



**Bulk Drug :** In a strategic move to meet the future by backward integration.

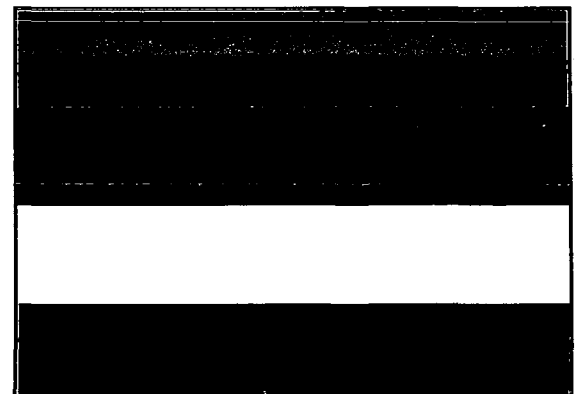
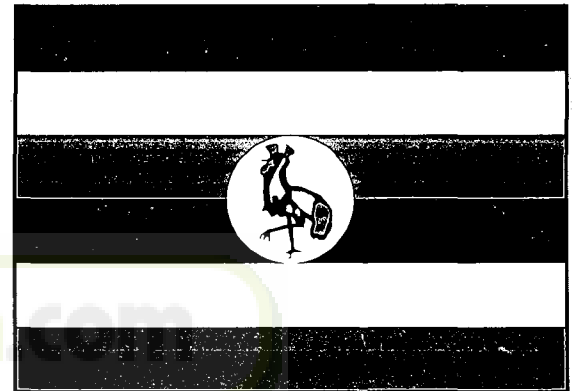
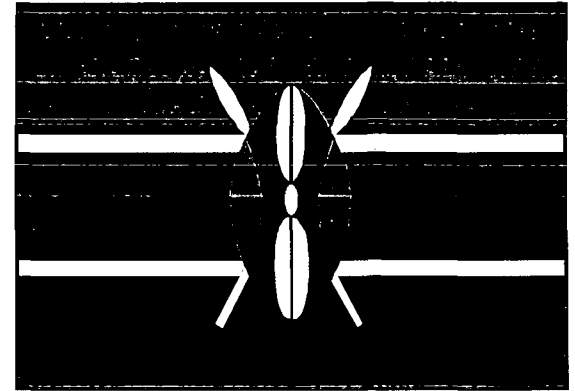
Cefuroxime Axetil & Quinolone for 1st time in India and vital import substitutes EMME, TEOF are in advanced stage of commercialization.

# ACE GROUP - SURGING AHEAD WITH INTERNATIONAL ALLIANCES

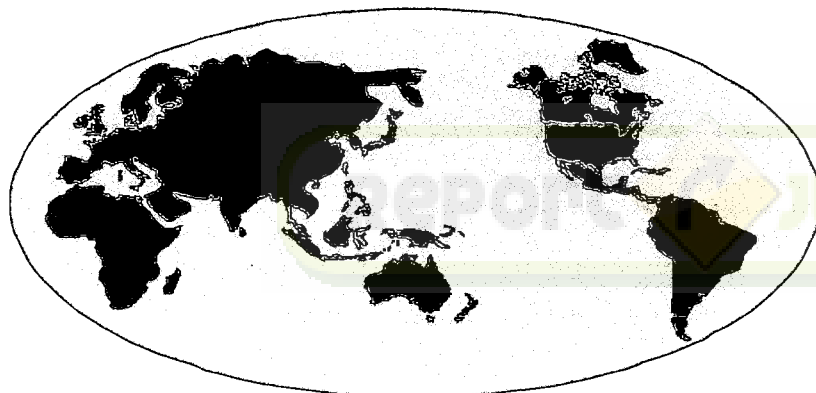
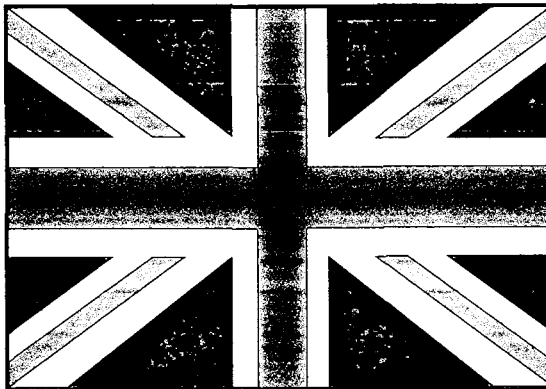
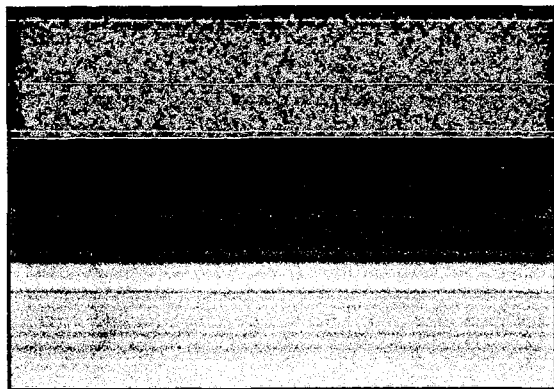
MULTILOCATIONAL PLANTS & OFFICES  
ABROAD SHAPES ACE INTO A  
MNC (MULTINATIONAL COMPANY)

## ACE MARKETING JOINT VENTURES

- ❑ NAIROBI, KENYA
- ❑ KAMPALA, UGANDA
- ❑ DAR-ES-SALAAM, TANZANIA







**ACE OVERSEAS JOINT VENTURE  
MANUFACTURING PLANT  
LOCATION**

- ACE LABORATORIES (NEPAL) LTD.  
BIRGANJ, NEPAL
- ACE LABORATORIES (MAURITIUS) LTD.  
PORT LOUIS, MAURITIUS
- JURABEK ACE LABORATORIES  
LTD., TASHKENT, UZBEKISTAN

