



A TOTAL COMMITMENT TO ENTERPRISE  
WITH A PROMISE OF LEADERSHIP  
AND TECHNOLOGICAL EXCELLENCE  
THROUGH INNOVATION  
AND CUSTOMER ORIENTATION



**UNIT I**

16, Industrial Estate, Rozka Meo, Sohna,  
District Gurgaon (Haryana).  
Phones: (0124) 662456, 662140,  
Tel/Fax: 124-662454  
email: amtekauto@satyam.net.in

**UNIT II**

Begampur Khataula, P.O. Khandsa,  
District Gurgaon (Haryana) - 122103,  
Phones: (0124) 373412, Fax: 124-37340  
email: amtekauto2@satyam.net.in

**UNIT III**

Village Mohammedpur, Jharsa, District  
Gurgaon, (Haryana) Phones: 124-37340  
email: amtek@satyam.net.in

**UNIT BANGALORE**

Plot No. 7 & 8, Hirehalli Industrial Area,  
Hirehalli Tumkur, Karnataka  
Phone: (0816) 43692, 43686  
email: amtekbang@sify.com

# CONTENTS

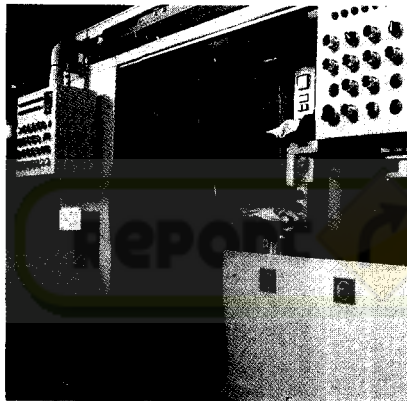


Corporate Perspective 2

Director's Report 26

Auditor's Report 29

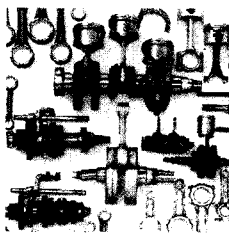
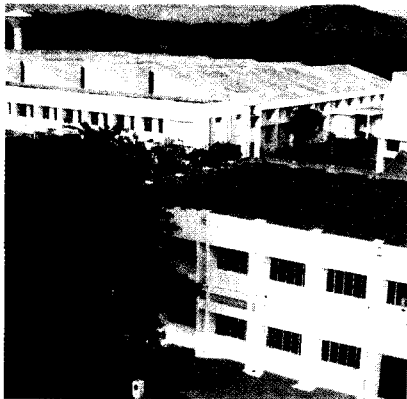
Cash Flow Statement 31

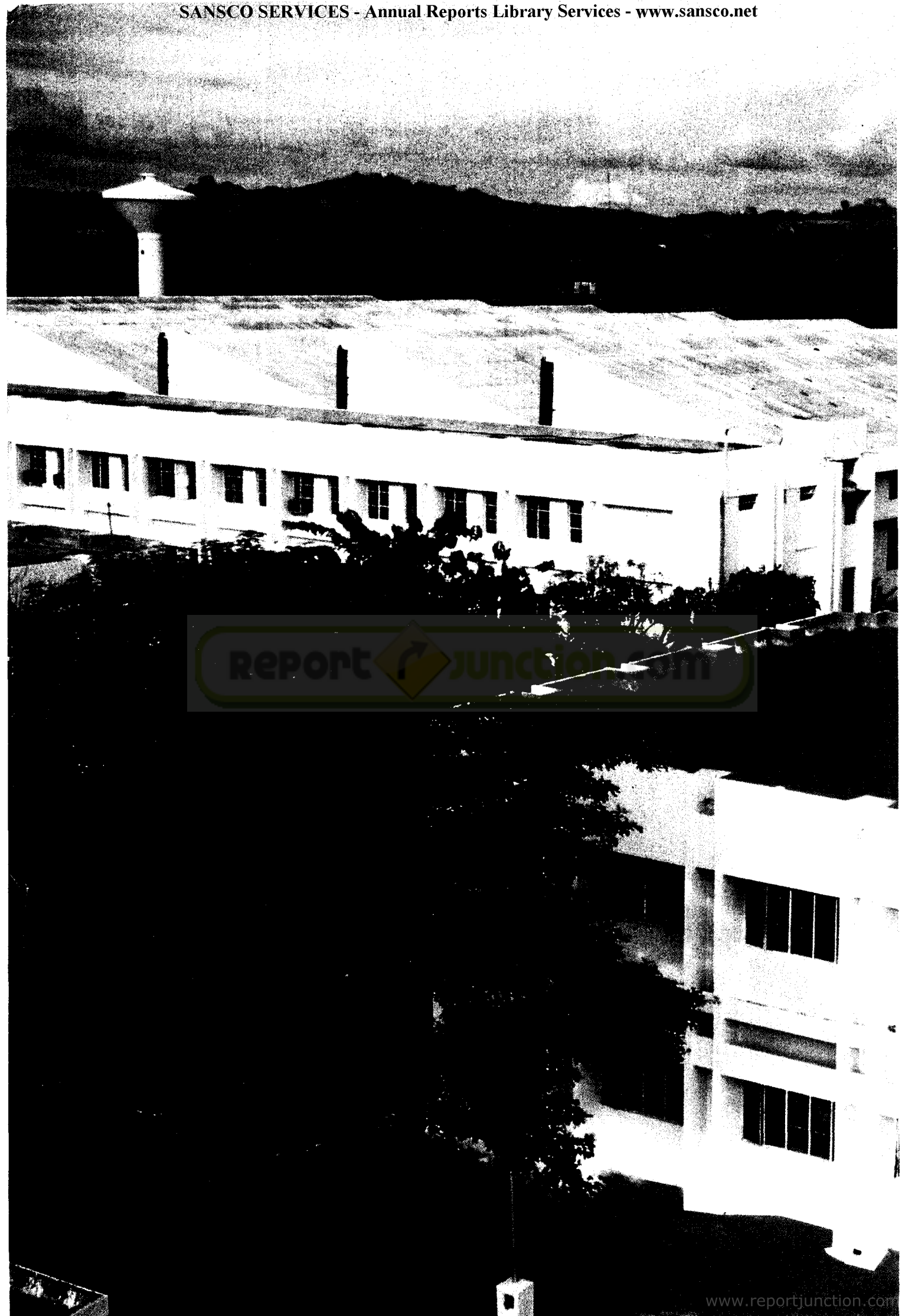


Balance Sheet 32

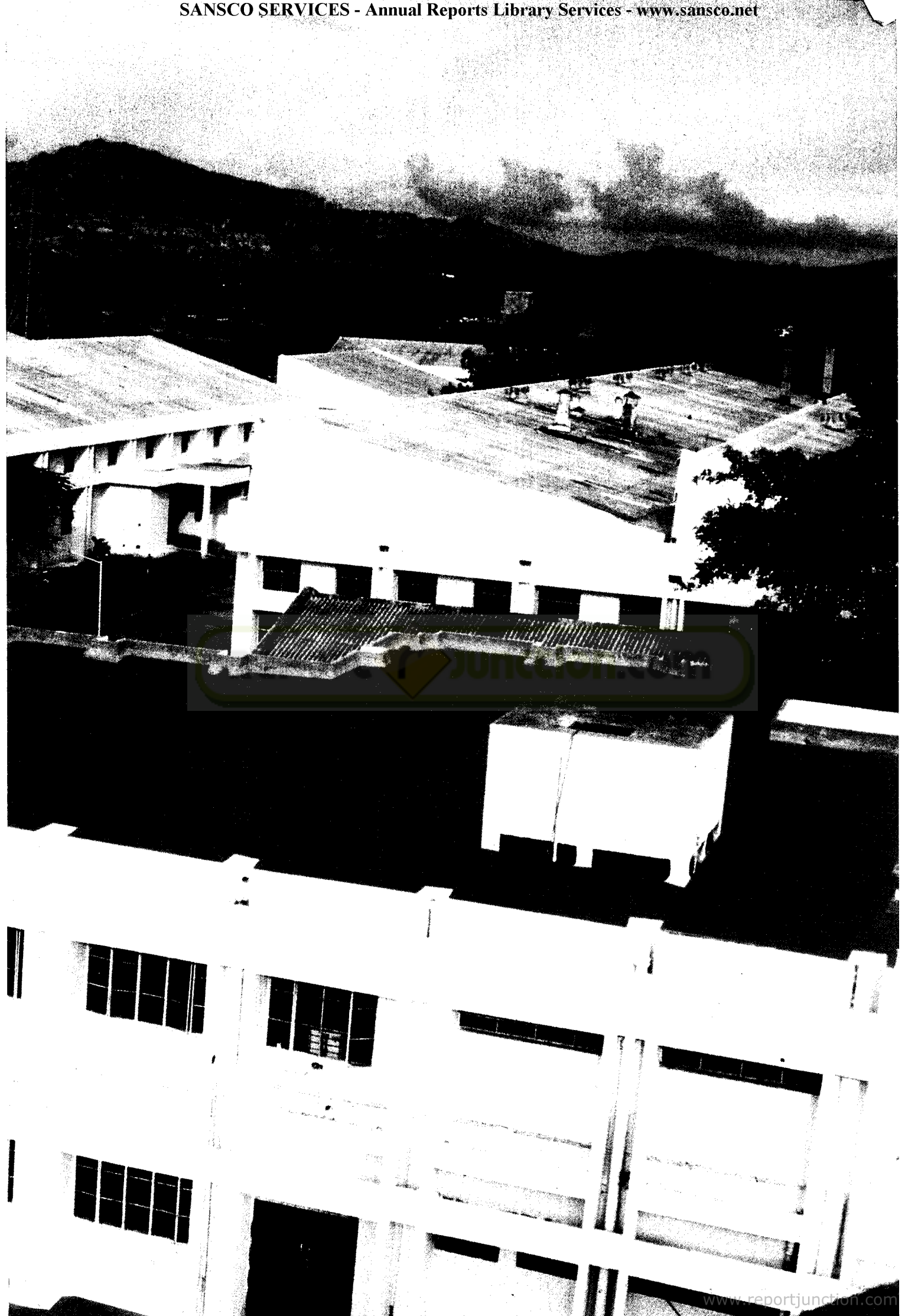
Porfit & Loss Account 33

Schedules 34





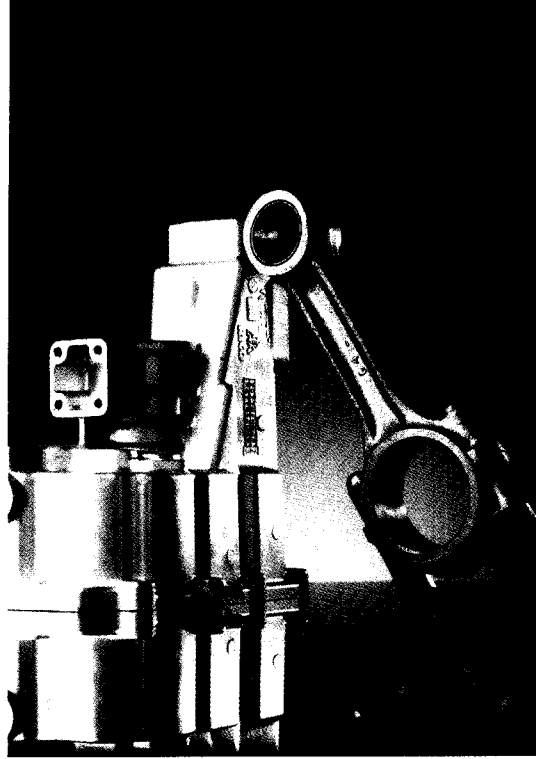




## STATE OF THE ART

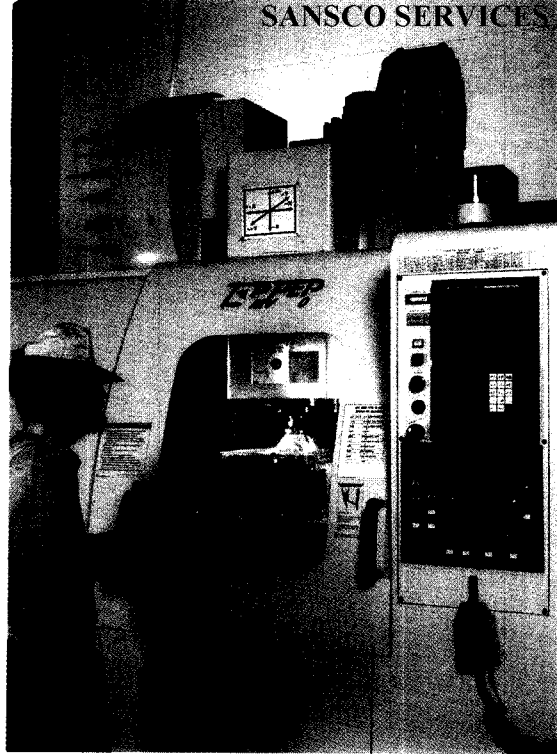
- The company has manufacturing units situated at Sohna, Gurgaon and Bangalore.
- The units are equipped with the most modern, high-tech Computerized Numeric Controlled (CNC) Machines, General Purposes Machines (GPMs), Special Purposes Machines (SPMs) and tooled up machines.
- The forging unit is located in Gurgaon. This Plant is equipped with sophisticated forgings presses imported from Germany with a production capacity of 480.0 million forgings per annum; supported by Billet heaters; trim Presses and most modern Automatic heat treatment plant. The unit also has a modern tool design facility and tool room equipped with CAD / CAM centres, CNC machines and EDMs. A team of highly skilled workforce manage the facilities. The plant is accredited with QS 9000.
- Among the machining facilities a imported transfer lines, with fully automated production facilities commissioned in technical collaboration with Aizen Co Limited Japan. This production line is only of its kind in the country.
- The unit has manufacturing facilities produce critical gear component cranks etc.
- Manufacturing units have inhouse modern testing and validation facilities. These include ultramodern CNC Co-ordinate Measuring Machines, Profile Projectors and Testers and other precision measuring equipment.



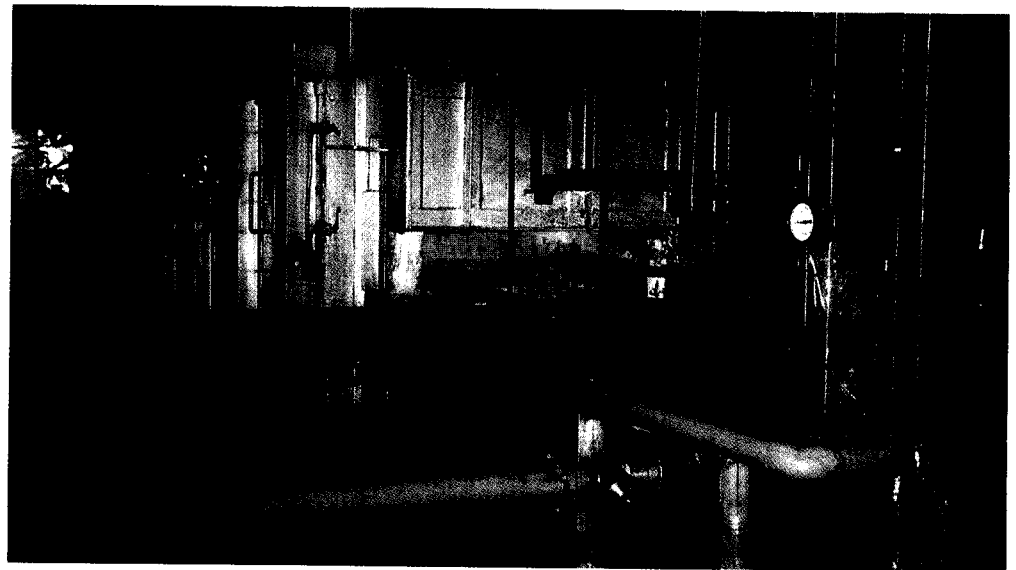
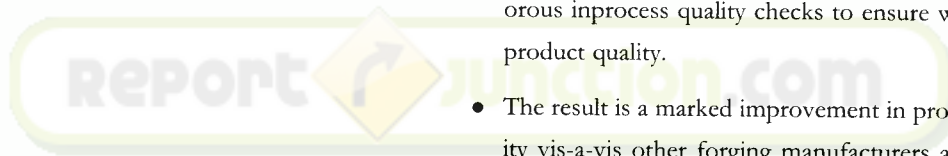


- Amtek Auto Limited is the flagship company of the AMTEK GROUP and specializes in the manufacture of critical application engine & transmission components and assemblies.
- A leading automotive component manufacturer of India.
- The company has a strong presence in the India Auto Industry as a major Original Equipment Supplier.
- Manufacturing units are accredited with ISO/QS 9000 certification for quality systems which is a global standard in the automotive industry.
- Largest manufacturer of gear-housings and connecting rod assemblies.

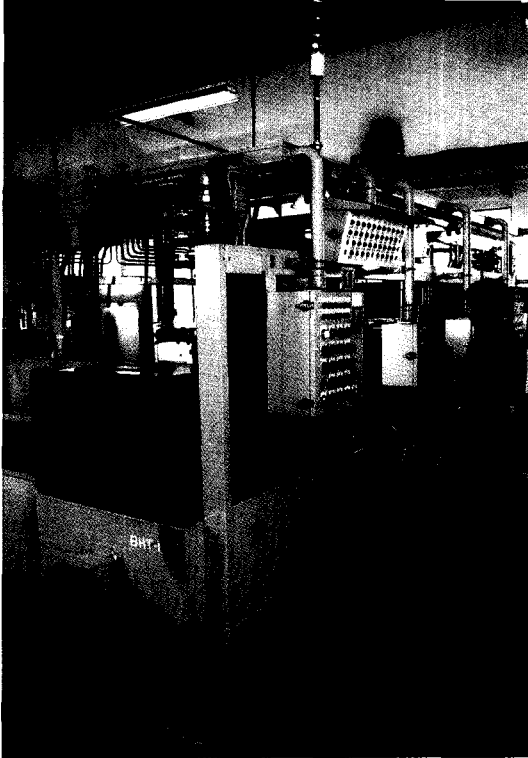




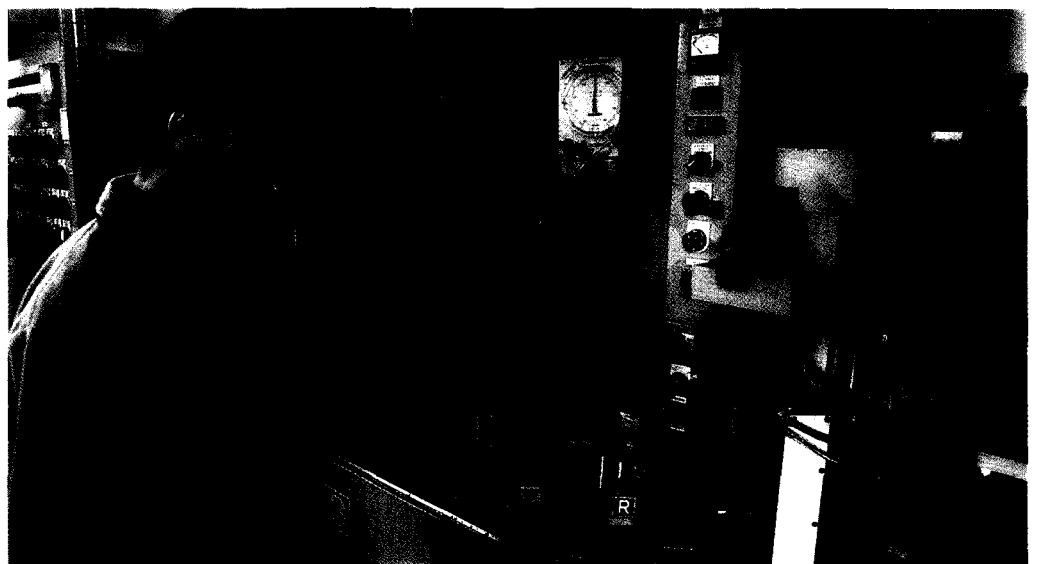
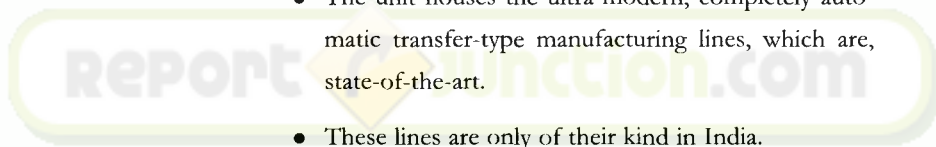
- Amtek Auto Limited UNIT-II was established as a backward integration facility for manufacturing world class precision forgings, which would cater to the in-house demand of forgings.
- This forging plant is equipped with sophisticated forging presses and others allied facilities like reduce roll, induction billet heaters, trim presses, coining presses, shot blasting machines, etc.
- The forgings manufactured in this unit undergo rigorous inprocess quality checks to ensure world class product quality.
- The result is a marked improvement in product quality vis-a-vis other forging manufacturers and a substantial benefit in raw material costs.
- This Unit is accredited with QS 9000 certification by DNV for its quality system.







- In view of the changing needs of the customers and an unflinching commitment to constant product improvement, Amtek Auto Limited UNIT III was established in technical collaboration with Aizen Co. Limited of Japan
- The collaboration agreement ensures a constant transfer of technical know how, production processes/techniques and facility for training for Amtek personnel at Aizen, Japan.
- The unit houses the ultra-modern, completely automatic transfer-type manufacturing lines, which are, state-of-the-art.
- These lines are only of their kind in India.
- The machines are installed with modern inspection equipment, which ensures dimensional accuracy during the machining process itself, thereby reducing drastically the rejection rates.





MARU  
8000  
CONROD

QUALITY & PRODUCT  
NOT CHECKED