

DISTILLERY

EDIBLE OIL

REAL ESTATE



**Investing** in Tomorrow.  
**Building** on Today.

# Investing in Tomorrow. Building on Today.

We are at the tipping point between our ambitions and our destiny. In our Edible Oils business, we are amongst the smartest manufacturers making full use of our economies of scale and our ability to use seasonal and cost-effective commodities as in-feeds.

In our Distillery business, we are delivering quantum growth in production, revenue, margins and eventually becoming an industry peer. In our Realty business, we're building quality homes that are putting smiles on the emerging middle class in central Punjab.

**Going forward, we are well positioned to capture the growing opportunities and deliver steady value creation to our stakeholders. As we plan for the future, we continue to invest in the sunrise areas of our business, that will be significant drivers for future growth. We are building on our solid progress so far, and remain focused on breaking new barriers of performance and returns over a period of time.**

**While we build on Today, we're investing in our Tomorrow.**



## CONTENTS

02	At a Glance	42	Our Performance Highlights
04	Our Heritage and History	43	Financial Highlights
06	Our Evolution Since Inception	44	Management Discussion & Analysis
08	Our Key Business Verticals – Edible Oil & Vanaspati	60	Director Report
14	Our Key Business Verticals – Distillery	91	Independent Auditors' Report
22	Our Key Business Verticals – Real Estate	96	Balance Sheet
28	Chairman's Message to Shareholders	97	Statement of Profit and Loss
32	Managing Director's Message to Shareholders	98	Cash Flow Statement
36	Our Board of Directors	99	Notes Forming Part of the Financial Statement
38	Our Leadership Team		



# At a Glance

We are one of the largest vertically integrated agro-based edible oil player in India, with a gross annual turnover of more than ₹650 crore and a total management experience of nearly four decades. We are a diversified conglomerate with business interests spread across a variety of sectors. We are the pioneers in discovering and creating innovative and cutting-edge solutions across sectors. Our qualified R&D team and product specialists carry out ongoing new product development, tailored to suit specific requirements.

Looking forward, we continue to build a growing base of discerning customers who are worldwide market leaders in many end-use industries. We continue to take advantage of our captive supply for key raw materials and our improved operational efficiencies to deliver satisfactory results and gain significant cost advantages.

## SHARE IN TOTAL REVENUE

64.5%

Edible Oil

32%

Distillation

3.5%

Real Estate

## KEY NUMBERS DEFINING US

₹671.28 Crore

Consolidated Turnover in FY2017

08

Edible Oil Brands

03

Key Areas of Business

300 Dealers

Edible Oil Distribution Network

1,000 MT Per Day

Capacity of Edible Oil Processing Unit

08

Distillery Brands (PML and IMFL)

200 KLPD

Distillery Capacity Post Expansion

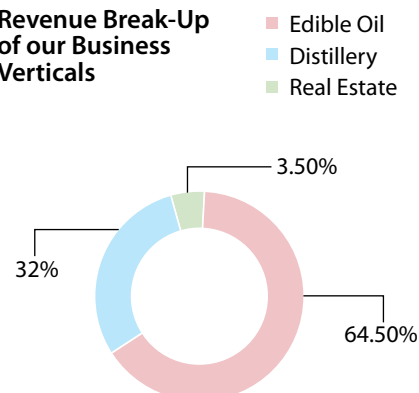
02

Completed Real Estate Projects

YoY Rise in Revenue  
(In ₹Crore)



Revenue Break-Up  
of our Business  
Verticals





## VISION

- The vision is to grow
- The commitment is to perform
- The excellence is to deliver consistently



## MISSION

Our aim is to create a hallmark in the Edible Oil, Real Estate and Distillery sectors with Improvisation, Novelty and Uniformity as the trademark of our business.

## CURRENT CAPACITIES

Unit	Installed Capacity (In Metric Tonnes Per Day)
Oil seed crushing unit	300
Solvent extraction plant	300
Edible oil refinery	100
Physical refinery to process CPO	100
Physical refinery to process RB Oil	100
Vanaspati	100
Rice sheller	220
Tin plant	In-house consumption
Blow moulding plant (Plastic Cans)	In-house consumption



## AWARDS & ACCOLADES

### Awards won by BCL under the leadership of Shri. Rajinder Mittal

- Hind Gaurav Award – 1994**  
(All India Achievers Conference, New Delhi)
- State Export Award – 1993-1994**  
(Department of Industries, Punjab)
- Management Excellence Award – 2005**  
MIDI (Management & Industrial Development Institute)
- Great Achiever of Industrial Excellent Award – 2006**  
(Council for Economic Growth & Research, New Delhi)
- B. K. Goenka SEA Award 2006-2007**
- B. K. Goenka SEA Award – 2007-2008**  
(Solvent Extractors Association is a premier association of vegetable oil industry and trade, ISO 9001:2008 Organisation)
- B. K. Goenka SEA Award – 2008-2009**  
Being the 2<sup>nd</sup> highest producer of refined rice bran oil in the country
- B. K. Goenka SEA Award – 2009-2010**  
Being the 2<sup>nd</sup> highest producer of refined rice bran oil in the country
- Renowned Industrialist State Award -2011 (Individual)**
- B. K. Goenka SEA Award – 2010-2011**  
Being the 2<sup>nd</sup> highest producer of refined rice bran oil in the country
- B. K. Goenka SEA Award – 2011-2012**  
Being the 2<sup>nd</sup> highest producer of refined rice bran oil in the country
- B. K. Goenka SEA Award – 2012-2013**  
Being the 2<sup>nd</sup> highest producer of refined rice bran oil in the country
- North India Achievers Award - 2014**  
The Economic Times Achievers of North 2014



# Our Heritage and History

We are a part of the Mittal Group, founded by Shri D. D. Mittal, who set in motion an intrinsic value system that became the bedrock of a great company in the making. This value system espoused Trust, Commitment and Transparency, in the way the business was to be conducted. These values held true then and continue to hold true now.

Under the dynamic stewardship and visionary leadership of Mr. Rajinder Mittal, the current Managing Director, we are setting new standards and practices in the businesses we are engaged in. Established in 1976, we have business interests in Solvent Extraction and Edible Oil, Distillation and Real Estate with an annual turnover of more than ₹650 crore.

We have over 4 decades of experience in the Group's core business of solvent extraction. We have transformed ourselves from a small oil mill to one of the most modern and fully integrated rice and edible oil complexes in India, with a processing capacity of 1,000 Metric Tonnes per day. We have gained a leadership position in the oil and rice

industry, especially in North India. Today, we own one of the largest vertically integrated agro-based edible oil complexes established in India.

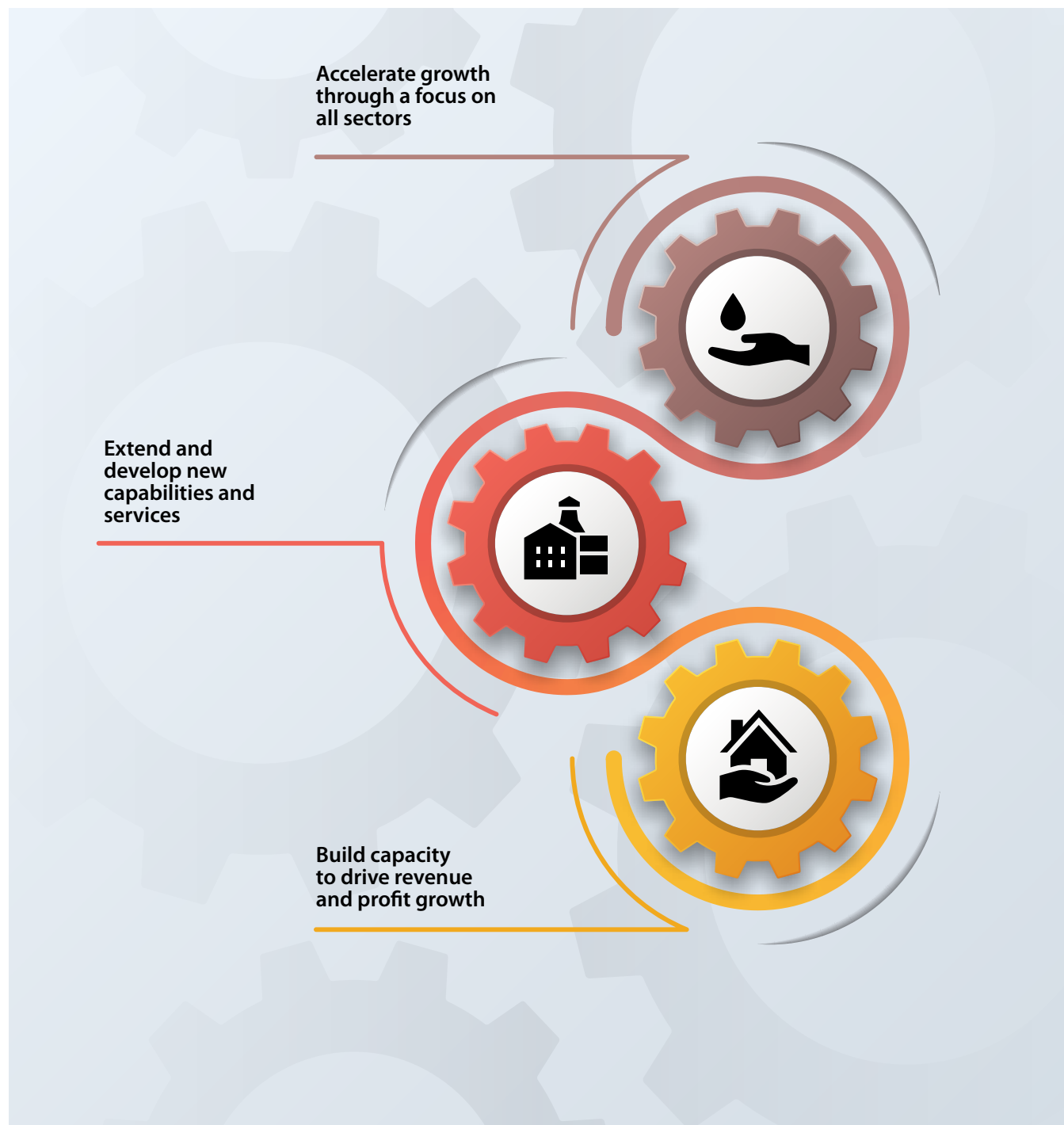
We diversified our core business by partnering a distillation plant manufacturing grain-based ENA/Ethanol alcohol. We emerged as the only company to manufacture high quality wheat gluten. The business was further expanded by setting up another state-of-the-art grain-based distillery at Village Sangat Kalan. The 100 KLPD capacity of this plant has been doubled during the year under review to reach 200 KLPD.



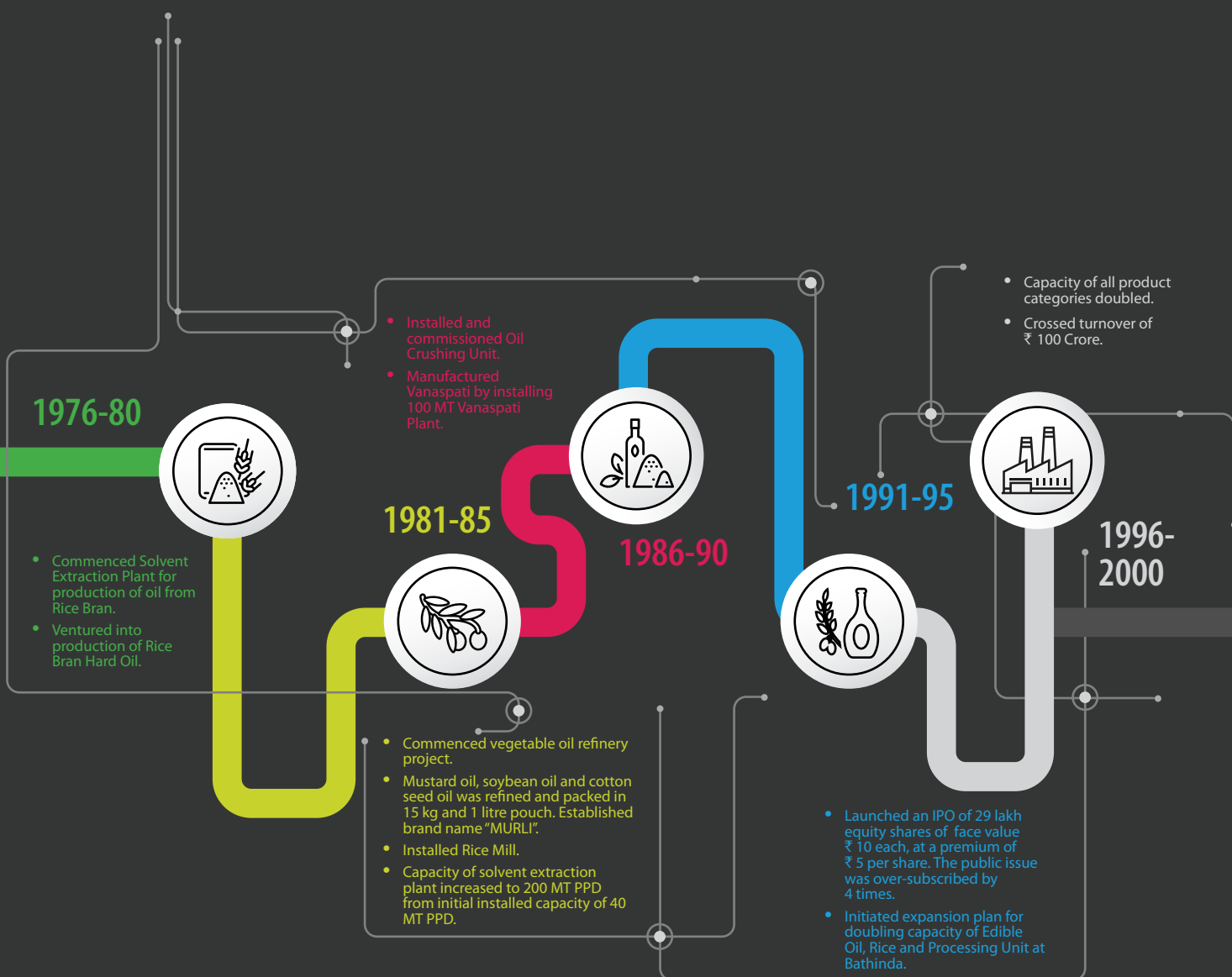
Planning for the future, we continue to invest in new products and areas of specialisation that will be significant drivers for our future growth, ensuring that we build significant progress over a period of time. Going forward, we are well positioned to deliver quality growth and sustained cycles of value creation for all our stakeholders.



## OUR FUTURE STRATEGY

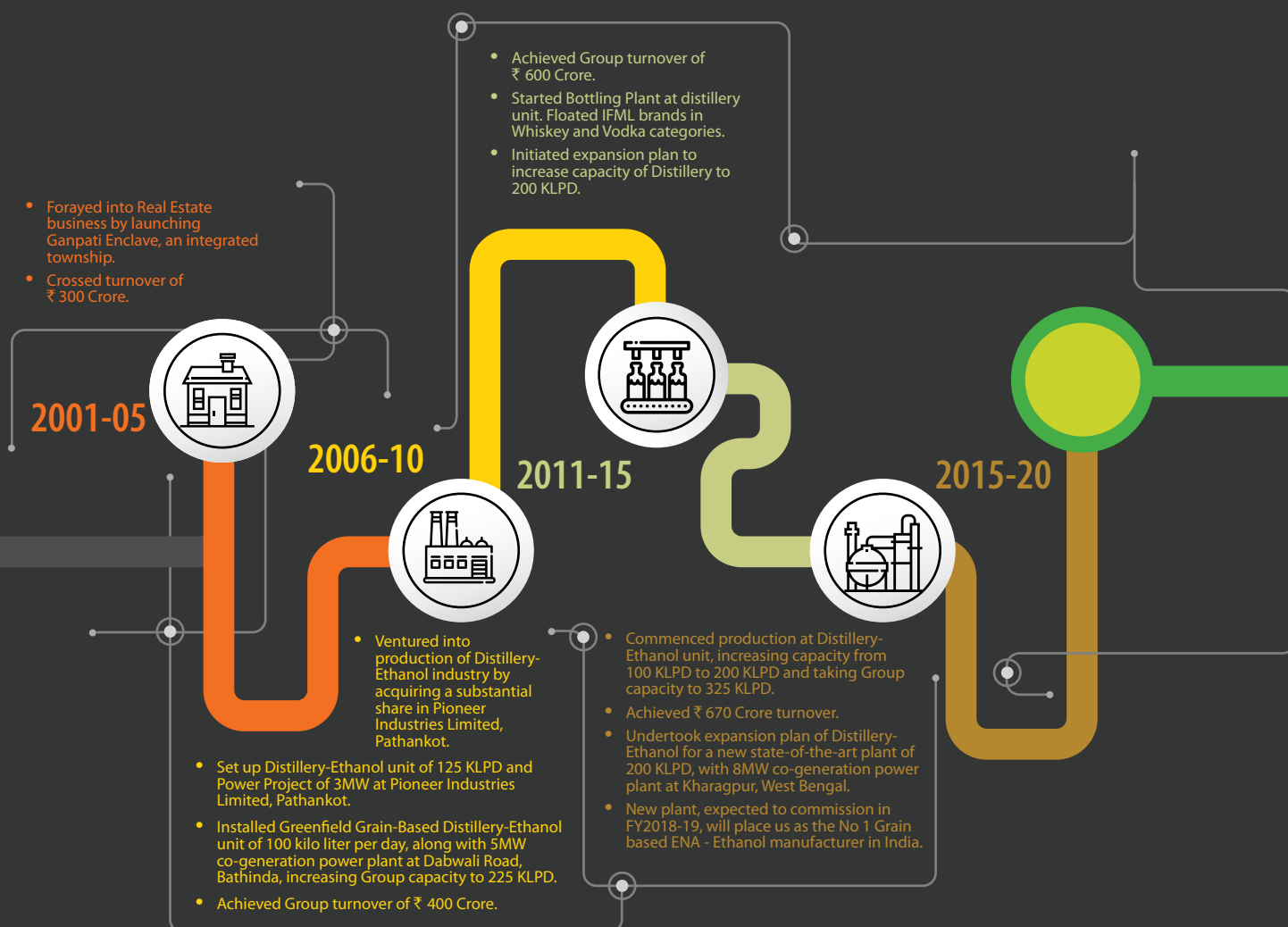


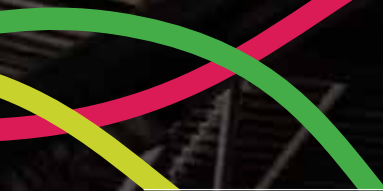
# Our Evolution Since Inception





We are BCL Industries & Infrastructures Limited. We are proud of the strong legacy and over 4 decades of rich experience. We are a diversified business house with business interests in edible oil extraction, distillery and realty.





Our Key  
Business Verticals

# EDIBLE OIL & VANASPATI

We are one of the largest vertically integrated rice and edible oil Complexes in North India, catering to a dominant share of the market. With state-of-the-art design and development facilities to handle solvent extraction from seed to full-scale manufacture and our unique competencies, we continue to enjoy a peer position among the top edible oil suppliers in this region.

