

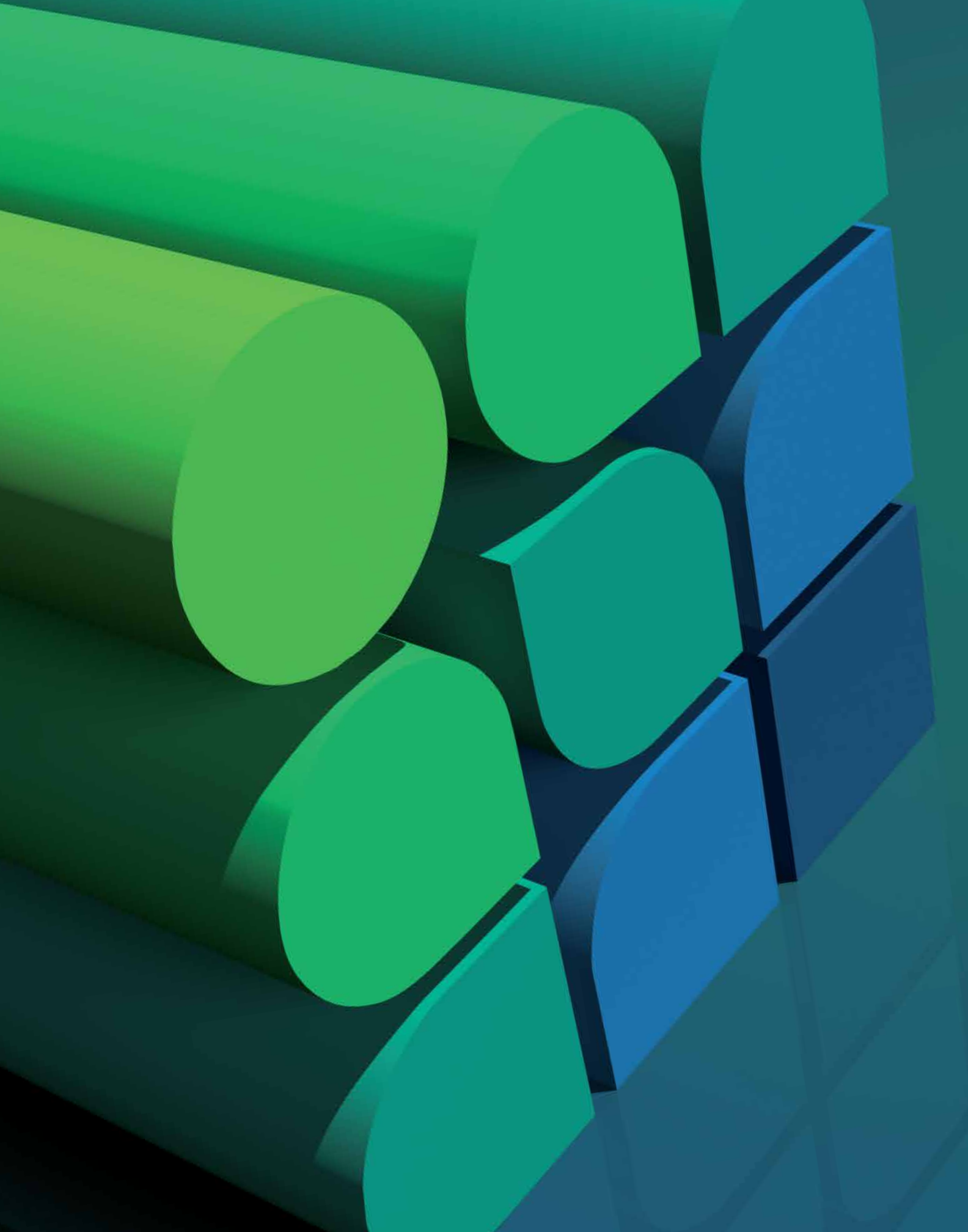


**BIRLA
CORPORATION
LIMITED**



TRUE SUCCESS RESTS ON HEART & STRENGTH

ANNUAL REPORT AND ACCOUNTS 2019-20



ANNUAL REPORT AND ACCOUNTS 2019-20



Madhav Prasadji Birla
(1918-1990)

002



Priyamvadaji Birla
(1928-2004)

003



Rajendraji S. Lodha
(1942-2008)

004



Shri Harsh V. Lodha
Chairman



Shri Pracheta Majumdar
Wholtime Director &
Chief Executive Officer



Shri Vikram Swarup



Shri Anand Bordia



Shri Brij Behari Tandon



Shri Dhruva Narayan Ghosh



Dr. Deepak Nayyar



Smt. Shailaja Chandra



Shri Dilip Ganesh Karnik

005

----- BOARD OF DIRECTORS -----

Shri Harsh V. Lodha (DIN 00394094)
Chairman

Shri Pracheta Majumdar (DIN 00179118)
Wholetime Director &
Chief Executive Officer
Shri Vikram Swarup (DIN 00163543)
Shri Anand Bordia (DIN 00679165)

Shri Brij Behari Tandon (DIN 00740511)
Shri Dhruba Narayan Ghosh (DIN 00012608)
Dr. Deepak Nayyar (DIN 00348529)
Smt. Shailaja Chandra (DIN 03320688)
Shri Dilip Ganesh Karnik (DIN 06419513)

----- SENIOR MANAGEMENT TEAM -----

Shri Sandip Ranjan Ghose
Chief Operating Officer

Shri Asim Chattopadhyay
Executive President
Operation

Shri Aditya Saraogi
Chief Financial Officer

Shri Rajesh Kakkar
Unit Head
Chanderia

Shri Bhaskar Bhattacharya
Unit Head
Satna

Shri Uttam Kumar Roy
Unit Head
Maihar

Shri Girish Sharma
Company Secretary

Smt. Susmita Bhattacharya
Head-Corporate (HR)

Shri Chisa Ram Verma
President
Birla Jute Mills

STATUTORY AUDITORS

V. Sankar Aiyar & Co.
Chartered Accountants
New Delhi - 110 008

CORPORATE OFFICE

1, Shakespeare Sarani (2nd Floor)
Kolkata - 700 071
Phone : (033) 6603 3300/01/02

**REGISTRAR & SHARE
TRANSFER AGENT**

MCS Share Transfer Agent Limited
383, Lake Gardens, 1st Floor
Kolkata - 700 045

REGISTERED OFFICE

Birla Building (3rd & 4th Floors)
9/1, R. N. Mukherjee Road
Kolkata - 700 001
Phone : (033) 6616 6729/37/38
E-mail : investorsgrievance@birlacorp.com
Website : www.birlacorporation.com
CIN : L01132WB1919PLC003334

CONTENTS

Notice	25
Consolidated Financial Highlights	37
Directors' Report & Management Discussion & Analysis	39
Business Responsibility Report	77
Report on Corporate Governance	86
Auditors' Report	106
Balance Sheet	112
Statement of Profit & Loss	113
Cash Flow Statement	114
Statement of Change in Equity	116
Notes to Financial Statements	118
Financial Information of Subsidiary Companies	174
Consolidated Financial Statements	175



HEART & STRENGTH

As we complete another year of remarkable achievements by all companies in the group, our conviction in 'Heart and Strength' gets even more entrenched in all aspects of our operations. It is a belief instilled in us by the vision of our founders Syt. Madhav Prasadji Birla and Smt. Priyamvadaji Birla. Remaining true to this vision, over the years, we have grown, advanced and developed the group in various dimensions. We have led the charge in building leading enterprises, educational institutions and healthcare facilities built on the foundations of integrity, sustainability, compassion and ethics. As a group we constantly strive to attain newer heights of operational excellence and commercial success, while following sustainable policies and practices that have a positive impact on the environment and the lives of all stakeholders.

Harsh V. Lodha
(Chairman)

VISION

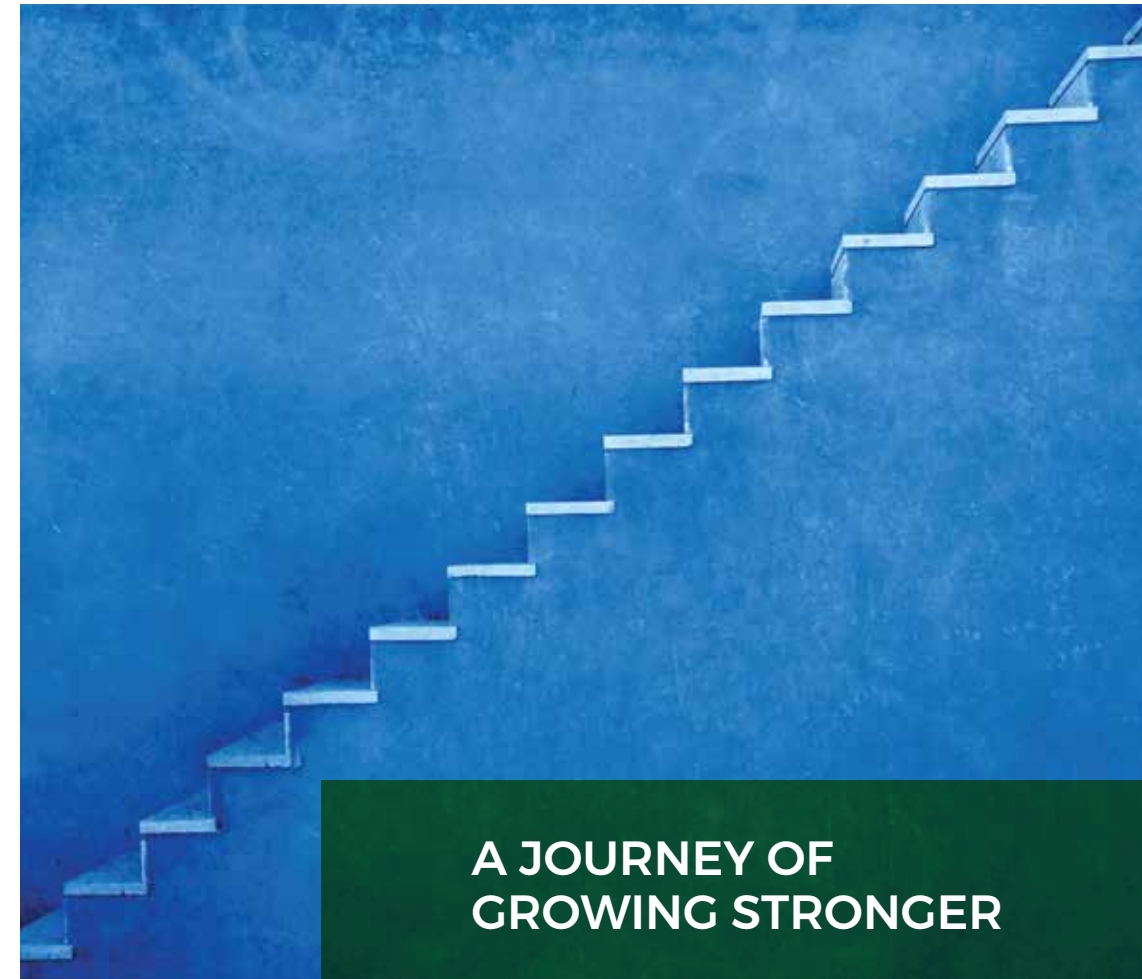
To be admired
for our Performance,
Ethics and Culture.

MISSION

To be the
best in class
in every sector
we operate.

VALUES

- Integrity
- Professionalism
- Value Creation
- Social Commitment



A JOURNEY OF GROWING STRONGER

2019-20 has been a year of unprecedented growth across all our divisions through seamless integration and better efficiency of manufacturing capabilities. While growth has been a constant, consistent efforts have been made to reach out and impact the lives of the people who reside around our factories and plants.

CEMENT

GROWING IN STRENGTH

SATNA

CHANDERIA

The Chanderia plant reached its highest ever production of the premium brand Perfect Plus cement. It also achieved the highest ever clinker TPD from CCW-2 kiln after the project completion of the first expansion phase.

The plant attained its highest ever clinker production and daily production from the BVC kiln.

To further integrate the automated weighbridge with SAP for all inward and outward movement of material, an Automated Truck Parking with Plant Entry & Weighbridge System was installed at the plant.

Farmers of the surrounding areas have gained from the Livelihood Promotional Program, Improved Agricultural Practices, Livestock Development & Wadi (Orchard) fruits based farming and increased their agricultural income.

012



BIRLA CORPORATION LIMITED

013



BIRLA CORPORATION LIMITED

MAIHAR



The efficient operating parameters of power and fuel consumption at the Maihar plant were rated as one of the best in the industry. Also, a 12.25MW Waste Heat Recovery System and 12MW solar plant were commissioned at the plant.

A MP Birla Cement mobile medical clinic, along with a doctor and pharmacist visited adjoining villages offering clinical examination and distribution of medicines. To further the cause of education, girls studying in class 10 of these villages were given home solar panels.



KUNDANGANJ

The Kundanganj plant broke all its previous records with the highest ever cement production and dispatch in a year. It also successfully set up a railway siding and automated loading facility for finished products.

The plant won the gold award under Apex India Environment Excellence award forum for outstanding achievement in Environment and Best CSR Impact award by UBS forum for various skill trainings program (Mason, Motor Driving, Stitching, Beautician etc.)

014

015



DURGAPUR

BUTIBORI

Safety measures at the RCCPL-Butibori plant never take a backseat. The Certificate of Zero Accident Year (2019-20) issued by Dy. Director of Industrial Health & Safety bears testament to that fact.

In collaboration with the Government Hospital, Takalghat, a Filariasis disease camp was organised for the residents of 35 villages near Butibori.



With the highest ever slag % utilisation in DCW PSC (yearly average) and fly ash % utilisation in DHTC PPC (yearly average), the Durgapur plant reached its highest ever cement production and dispatch in a year.

As part of the CSR initiatives, Free Eye Screening and Surgery Camps were held regularly for people from rural areas to have easy access to these facilities.

016

017