

An aerial photograph of a coastal area, showing a mix of light-colored sandy or rocky terrain and darker, possibly vegetated or forested areas. A large, white, stylized graphic element, resembling a thick, curved arrow or a partial spiral, is positioned on the right side of the image, extending from the top right towards the bottom right. The graphic is composed of several thick, white lines that curve and intersect, creating a sense of movement and direction.

Capitalising!

The story of how Dhampur Sugar Mills expects
to capitalise on the imminent industry rebound

Dhampur Sugar Mills Limited | Annual Report 2015-16

Forward-looking statement

Statements in this report that describe the Company's objectives, projections, estimates, expectations or predictions of the future may be 'forward-looking statements' within the meaning of the applicable securities laws and regulations. The Company cautions that such statements involve risks and uncertainty and that actual results could differ materially from those expressed or implied. Readers are requested caution while placing undue reliance on these statements as many factors could cause differences in the assumptions and the actual results. Accordingly, this document is subject to the disclaimer and qualified in its entirety by the assumptions, qualifications and risk factors referred to in the management discussion and analysis section part of the Dhampur Sugar Mills Limited Annual Report, 2015-16.

Contents



02	Corporate identity
04	Dhampur's progress report
06	Manufacturing facilities
14	Milestones
16	Managing directors review
20	Performance highlights
22	Divisional review
25	Management discussion and analysis
27	Finance review
29	Corporate social responsibility at Dhampur
30	Risk management
32	Board's report
54	Report on corporate governance
66	Auditor's report
70	Consolidated balance sheet
71	Consolidated profit and loss statement
72	Consolidated cash flow statement
73	Notes to consolidated financial statements
103	Standalone section



After a prolonged downturn, the Indian sugar industry posted its most vigorous revival in 2015-16.

Marked by enhanced sugar recoveries, robust offtake and improved realisations (in the last quarter), paired with healthy ethanol sales volume and realisations.

Dhampur Sugar Mills Limited reported one of the sharpest financial turnarounds.

From a net loss of ₹54.16 crore in 2014-15 to a net profit (before tax) of ₹31.39 crore in 2015-16.


From being the last man standing during the downtrend to among the first to rebound following the revival.



This is Dhampur Sugar Mills Limited.

Cumulative sugar manufacturing capacity 

45,500 TCD

Cumulative ethanol production capacity per day 

3,00,000 litres

Installed power generation capacity 

209 megawatts

Dhampur Sugar is...

- One of India's most reputed sugarcane processing firms.
- The first in India to manufacture sulphur-less refined sugar
- Operating in three segments – sugar, power generation and distillery
- Five manufacturing facilities in Uttar Pradesh (Dhampur, Asmoli, Mansurpur, Rajpura and Meerganj)
- A formidable presence in ancillary sectors like renewable energy, ethanol, alcohol, extra neutral alcohol, alcohol-based chemicals and biofertilisers

Portfolio



Sugar

- Refined sugar
- White sugar
- Retail sugar



Power

- Power Generation



Chemicals

- Ethanol
- Extra neutral alcohol
- Ethyl acetate



Biofertilisers

- Bio-compost
- Liquid biofertilisers

Vision

To be a responsible corporate citizen wherein we make a positive contribution to our environment and work for the benefit of all our stakeholders – farmers, employees, shareholders and everybody else involved with the organisation.

Mission

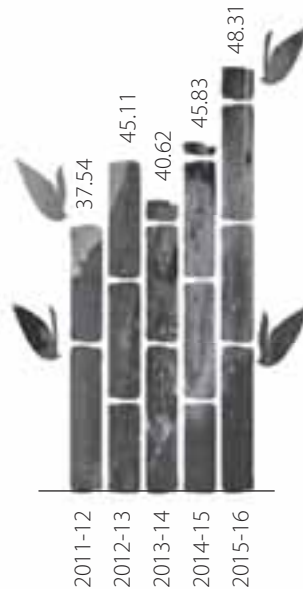
To be a leading agro-based company and to manufacture and promote agro and other green products and also maximise the renewable energy potential of agricultural commodities.

Background

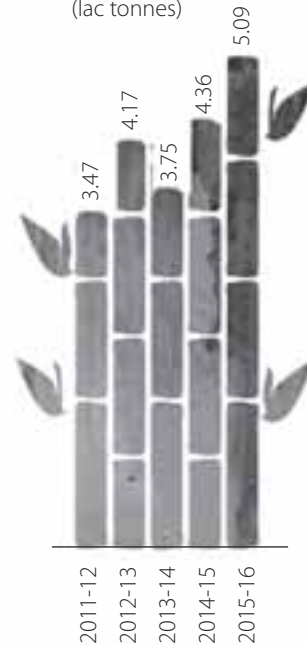
Founded by Lala Ram Narain in 1933 with a crushing capacity of 300 tonnes of cane per day, the Dhampur mill has emerged as one of India's leading integrated sugarcane processing complexes comprising large sugar manufacturing operations as well as one of India's largest power generation and ethanol manufacturing capacities.

Dhampur's progress report

Sugarcane crushed
(lac tonnes)



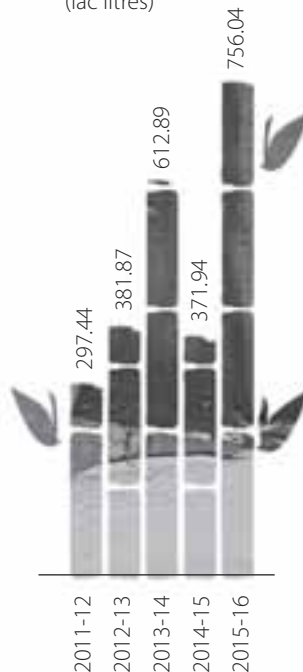
Sugar produced
(lac tonnes)



Power generated
(crore units)



Ethanol/RS/ENA produced
(lac litres)



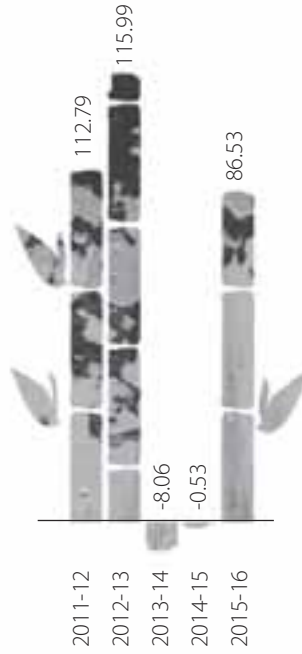
Income from operations
(₹ crore)



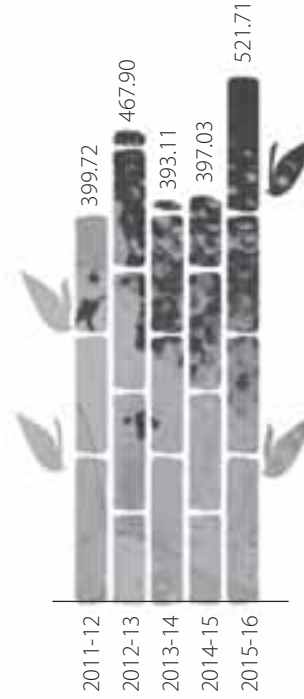
EBITDA (₹ crore)



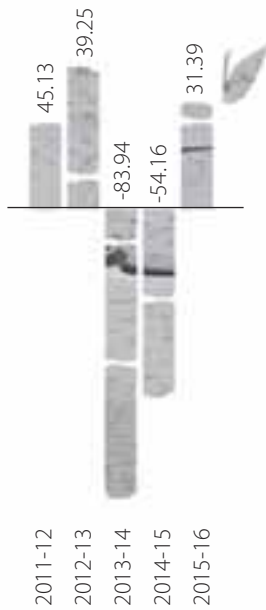
Cash profit (₹ crore)



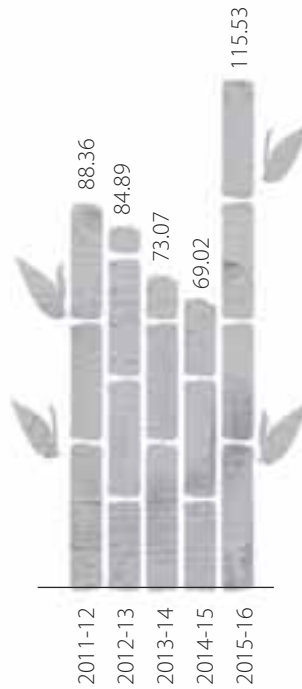
Gross profit (₹ crore)



Profit (Loss) before tax
(₹ crore)



Book value per share (₹)



Manufacturing facilities

DHAMPUR, BIJNOR DISTRICT, UTTAR PRADESH

CANE CRUSHING

15,000 MT per day

POWER GENERATION

65 megawatts

DISTILLERY

200,000 litres per day

BIOFERTILISER

15,000 tonnes per annum

Quick facts

- Dhampur was the first company in India to install a 105 kilogram per square centimetre boiler and turbine in 2006-07, making it among the most efficient power cogeneration companies in the world
- Dhampur's 65-megawatt cogeneration capacity is the largest across any single unit in India

ASMOLI, SAMBHAL DISTRICT, UTTAR PRADESH

CANE CRUSHING

9,000 MT per day

POWER GENERATION

44 megawatts

DISTILLERY

100,000 litres per day

BIOFERTILISER

5,000 tonnes per annum

Quick facts

- Asmoli employs the DRP (Defco Remelt Phosphotation) process with ion exchange to produce refined sugar
- The other distillery products comprise ethanol, extra neutral alcohol and rectified spirit. Biogas produced is consumed in-house

**MANSURPUR, MUZAFFARNAGAR DISTRICT,
UTTAR PRADESH**

CANE CRUSHING

8,000 MT per day

POWER GENERATION

33 megawatts

Quick facts

- Employs the DRP (Defco Remelt Phosphotation) process with ion exchange to produce refined sugar, which is sold in 50 kilogram bulk packs as well as 1 kilogram and 5 kilogram small packs (brand DHAMpure)
- The unit's bagasse-based cogeneration plant generates power for captive consumption and merchant sale

RAJPURA, SAMBHAL DISTRICT, UTTAR PRADESH

CANE CRUSHING

8,500 MT per day

POWER GENERATION

48 megawatts

LIQUID BIOFERTILISER

1,000 litres per day

Quick facts

- The unit is fully-automated and has one of the lowest steam consumption ratios in India
- The intensive cane development programme provides farmers with the latest seeds, high sucrose sugarcane varieties and subsidised pesticides

MEERGANJ, BAREILLY DISTRICT, UTTAR PRADESH

CANE CRUSHING

5,000 MT per day

POWER GENERATION

19 megawatts

Quick facts

- The unit was acquired from JK Sugar Limited and merged with Dhampur Sugar Mills in 2013
- The unit generates green power which has enhanced self-sufficiency

The long-awaited resurgence in the sugar industry has begun.

After a protracted downturn, things have finally started to look up.

