



Excel Industries Limited



Annual Report : 2013-2014

When quality is a state of mind, growth becomes a natural process. And with it, Leadership.

Excel delivers on its promise of quality and delivers beyond customer expectations.

Powered by world class R&D and Manufacturing strength, Differentiating through dynamism in products and business strategies, Innovation, Expertise and Faster market introductions, all these make us the preferred partner for our clients around the world.

By providing quality solutions that are critical for market leadership; We share a vision to be the world's most trusted Chemicals Company.

We provide:

* Chemicals for Agriculture Industry * Biocides * Polymer Additives * Speciality Chemicals

* Pharmaceutical & Veterinary APIs

* Solutions in Environment Management

EXCEL INDUSTRIES LIMITED

CIN: L24200MH1960PLC011807

CONTENTS

Board of Directors	2
Notice	9-26
Directors' Report	27-34
Management Discussion and Analysis	35-38
Corporate Governance Report	39-53
Ten-Year Highlights	54
Summarised Balance Sheet and Statement of Profit & Loss	55
Auditors' Report	56-59
Balance Sheet	60
Statement of Profit & Loss	61
Cash Flow Statement	62-63
Notes '1' to '44' forming part of Financial Statements	64-95
Auditors' Report on Consolidated Financial Statements	96-97
Consolidated Balance Sheet	98
Consolidated Statement of Profit & Loss	99
Consolidated Cash Flow Statement	100-101
Notes '1' to '43' forming part of Consolidated Financial Statements	102-135
Statement pursuant to Section 212 of the Companies Act, 1956, relating to Subsidiary Companies ..	136
Proxy Form and Attendance Slip are attached at the end	

53rd Annual General Meeting

*on Friday, 26th September, 2014 at 3.00 p.m.
at Rama Watumull Auditorium,
Kishinchand Chellaram College,
Dinshaw Wacha Road,
Churchgate, Mumbai-400 020.*

A REQUEST

We are sure you will read with interest the Annual Report for the year 2013-14. You may desire to have some clarification or additional information at the ensuing Annual General Meeting. We shall very much appreciate, if you will kindly write to us at least ten days in advance in order to enable us to keep the information ready for you at the Meeting. We solicit your kind co-operation.

EXCEL INDUSTRIES LIMITED

CIN: L24200MH1960PLC011807

CHAIRMAN EMERITUS

K. C. SHROFF

G. NARAYANA

BOARD OF DIRECTORS

A. C. SHROFF, *Chairman & Managing Director*

U. A. SHROFF, *Executive Vice Chairperson*

S. R. POTDAR, *Executive Director (upto 02/09/2014)*

R. A. SHROFF, *Executive Director (w.e.f. 03/09/2014)*

A. G. SHROFF

D. K. SHROFF

N. B. SATHE

R. N. BHOGALE

H. N. MOTIWALLA

P. S. JHAVERI

M. B. PAREKH

S. S. VAIDYA, *Additional Director (w.e.f. 08/08/2014)*

R. M. PANDIA, *Additional Director (w.e.f. 08/08/2014)*

CHIEF FINANCIAL OFFICER

KAILAS DABHOLKAR

COMPANY SECRETARY

S. K. SINGHVI

AUDITORS

S. R. BATLIBOI & CO. LLP

Chartered Accountants

BANKERS

Bank of India

State Bank of India

Axis Bank Limited

REGISTRAR & TRANSFER AGENT

Link Intime India Private Limited,
C-13, Pannalal Silk Mills Compound,
Bhandup (W), Mumbai 400 078.

Tel : 2596 3838, Fax : 2594 6969

E-mail : rnt.helpdesk@linkintime.co.in

Web : <http://www.linkintime.co.in>

REGISTERED OFFICE

184-87, Swami Vivekanand Road,
Jogeshwari (West), Mumbai 400 102.

Tel : 6646 4200

E-mail : excel.mumbai@excelind.com

Web : <http://www.excelind.co.in>

FACTORIES

M.I.D.C. Area, Roha, Maharashtra.

M.I.D.C. Area, Lote Parshuram, Maharashtra.

Baherampura, Ahmedabad, Gujarat.

AWARDS AND ACHIEVEMENTS...

It gives us immense pleasure in informing all our stakeholders that the year 2013-14 has been one of great achievements and of success stories which we feel proud to share with you here. This has further strengthened our belief in our journey to Sustainable Development. In fact these are quite symbolic of our approach to "Inclusive Growth".

Shri Ashwinbhai Shroff, Chairman and Managing Director, Excel Industries Ltd was conferred with "ICC Lifetime Achievement Award" for his contribution to "Safeguarding the Interest of Stakeholders, the society and the environment; pioneering work in community development near Roha and in Kutchh; to growth and competitiveness of Indian Chemical Industries, by closely working with Government Agencies as President of ICC, Chairman of Roha Industries Association and as Co-chairman of CII's Agri-Biotech committee.

The Company got permission from ICC to use "Responsible Care" logo after a rigorous Audit by the ICC audit team. This permission to use the RC logo illustrates the Company's successful adoption of RC and adhering to the guiding principles to ensure Safety, Health & Environmental Standards.

Company's CSR work is appreciated by Indian Chemical Council conferring "ICC Award for Social Responsibility" for the year 2012 on 26th September 2013.

PROUD MOMENT FOR EXCEL FAMILY :



**Shri Ashwin Shroff, CMD, Excel Ind. Ltd.,
Along with Mrs. Usha Shroff, receiving the
ICC Lifetime Achievement Award.**

ICC LIFETIME ACHIEVEMENT AWARD

CITATION

Conferred on
ASHWIN C. SHROFF
Chairman & Mg. Director, Excel Ind. Ltd



MR. ASHWIN C. SHROFF, Chairman & Managing Director of Excel Industries Limited, joined the company in 1965 and has steered it to its current position of eminence and strength. He is also the Chairman of other group companies, such as Excel Crop Care Limited, Transpek Industry Limited and Transpek-Saha Industry Limited.

Mr. Shroff has continued and built heavily upon the family tradition of focusing on safeguarding the interests of stakeholders, the society and the environment. The Excel group has been practicing these principles even before the concept of Triple Bottom Line gained popularity.

Mr. Shroff believes firmly in empowering local

communities and weaker sections of the Society. The pioneering work done by him through various organisations in Kutchh and near Roha has been seen as a model for community development.

As President of Indian Chemical Council, Chairman of Roha Industries Association and Chairman of CII's Agri-Biotech Committee, he has worked closely with the Government for enhancing the growth and competitiveness of the Indian chemical industry. As a member of the Research Councils of CSIR laboratories, Mr. Shroff has also helped in giving a direction to innovation, a subject to which the Excel group has made substantial contribution. Under his guidance, Excel Industries Limited has introduced products which deal with management and gradual utilization of municipal wastes. These processing solutions have gained wide acceptance.

Mr. Shroff's humane approach to various issues, his humility and social consciousness have contributed greatly to the esteem in which he is held.

In recognition of his outstanding contributions, **INDIAN CHEMICAL COUNCIL** is pleased to confer the **ICC LIFETIME ACHIEVEMENT AWARD** for the year 2012 on **MR. ASHWIN C. SHROFF**, Chairman & Managing Director, Excel Industries Ltd, Mumbai.

AWARDS AND ACHIEVEMENTS...



CSR AWARD : CITATION



THE ICC AWARD FOR SOCIAL RESPONSIBILITY IS BEING PRESENTED TO THE EXCEL TEAM.

CORPORATE SOCIAL RESPONSIBILITY...



Afforestation : by supplying saplings and conducting plantation programs

Career guidance : More than 500 students were encouraged to undertake suitable education for better future career.

Promoting Vaccination Drive of Animal Husbandry Department : More than 3000 cattle from about 30 villages were vaccinated.

Rain Water Harvesting / Water Shed Development : The project includes repairing of check dams, silt removal etc.

Women Empowerment : Self Help Group, Learn & Earn concept like tile fixing, artificial garland and incense sticks making.

RESPONSIBLE CARE...

Responsible care is the Chemical Industry's unique global initiative that drives continuous improvement in Health, Safety and Environment (HSE) performance together with open and transparent communication with stakeholders. Responsible care embraces the development and application of sustainable chemistry.

It was launched in Canada in 1985 by Canadian Chemical Producers Association. Subsequently it was adopted by the Chemical Industry world over. Indian Chemical Manufacturing Association (ICMA, today's Indian Chemical Council - ICC) adopted it in 1992 and appealed it's members to adopt same 'Voluntarily'

Excel Industries Ltd. was the first to become a signatory to this voluntary initiative. EHS had been of paramount importance to the Company. It has strived since it's inception to develop safe working culture among the employees at entire cross section from Manager, Engineer, Supervisor and Operator.

The Chemical Industry has grown and developed to an extent that it has reached to every household through numerous products. However, hazardous nature of chemicals and the processes and some accidents causing large adverse impact on the society, maligned the image of Chemical Industry. It created a 'Fear' in the minds of people at large.

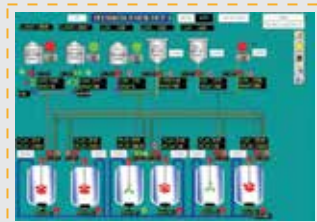
ICC then appealed to the member industries to adopt this system and made it mandatory to it's members. The guiding principles of Responsible Care are:

- To recognize and respond to community concerns about chemicals and our operations.
- To develop and produce chemicals that can be manufactured, transported, used and disposed off safely.
- To make health, safety and environmental considerations a priority in our planning for all existing and new products and processes.
- To report promptly to officials, employee, customers and the public, information on chemical related health hazards and to recommended protective measures.
- To counsel customers on the safe use, transportation and disposal of chemical products.
- To operate our plants and facilities in a manner that protects the environment and the health and safety of our employees and public.
- To extend knowledge by conducting or supporting research on the health, safety and environmental effects of our products processes and waste materials.
- To work with others to resolve problems created by past handling and disposal of hazardous substances.
- To participate with government and others in creating responsible laws, regulations and standards to safeguard the community workplace and environment.
- To promote the principles and practices of Responsible Care by sharing experiences and offering assistance to others who produce, handle, use, transport or dispose off chemicals.

In the year 2003-2004, ICC instituted Aditya Birla Award for Best Responsible Care Committed Company, which includes plaque, citation and a cash award of Rs. 1.00 lakh.

RESPONSIBLE CARE...

PROCESS SAFETY CODE



EMERGENCY RESPONSE CODE



EMERGENCY PREPARATION: INDUSTRIAL CIVIL DEFENCE UNITS



DISTRIBUTION CODE: SAFE TRANSPORTATION OF HAZARDOUS GOODS



RESPONSIBLE CARE...

COMMUNITY AWARENESS



POLLUTION PREVENTION CODE



EMPLOYEE'S SAFETY & HEALTH



PRODUCT STEWARDSHIP CODE

