



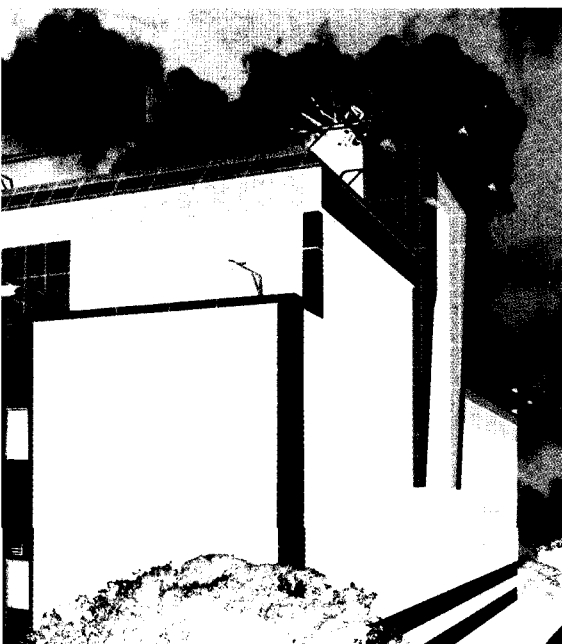
EXIDE INDUSTRIES LIMITED

ANNUAL REPORT AND ACCOUNTS 2004-2005 www.reportjunction.com

Report  junction.com

CONTENTS

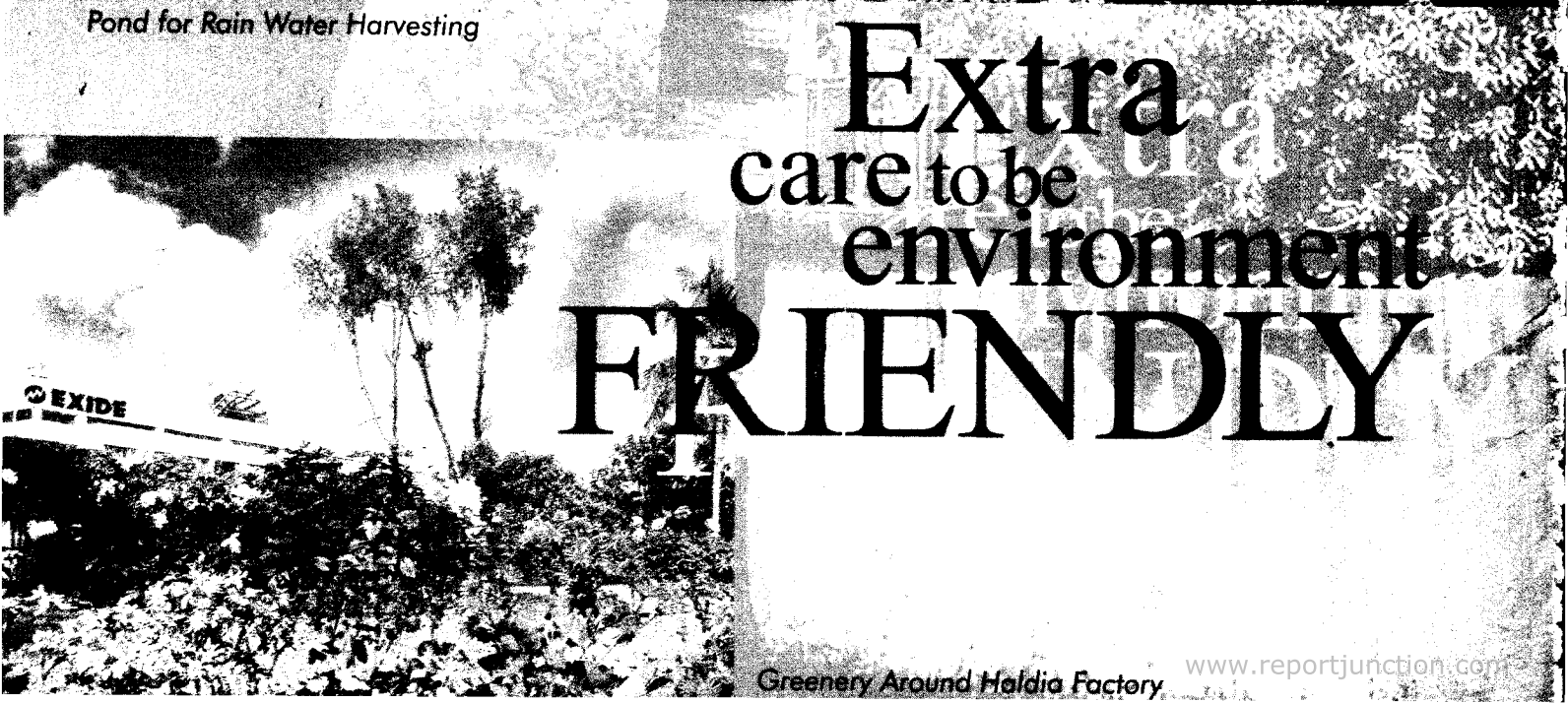
The new look Exide headquarters features the old landmark encased in sleek glass. Implemented by Nitson Amitsu, under guidance of Tag Architectonics, to reduce the soaring noise levels from the street, it uses about 350 glass panels to cover 12,000 sq m of the facade in a double layer. Thanks to the cladding, the decibel count has reduced from 100 to 40 for a more conducive work environment.



Notice of Annual General Meeting	15
Directors' Report	21
Fiscal Trends	27
The Decade in Retrospect	30
Equity History	30
Report on Corporate Governance	31
Auditors' Certificate	35
Management Discussion and Analysis	36
Auditors' Report	38
Balance Sheet	42
Profit and Loss Account	43
Cash Flow Statement	44
Schedules forming part of the Accounts	45
Information Regarding Subsidiary Companies	61
Balance Sheet Abstract and Company's General Business Profile	62
Subsidiary Company: Chloride International Limited	63
Subsidiary Company: Caldyne Automatics Limited	73
Subsidiary Company: Chloride Batteries S.E. Asia Pte Limited	87
Subsidiary Company: Espex Batteries Limited	106
Subsidiary Company: Associated Battery Manufacturers (Ceylon) Limited	117
Consolidated Financial Statements	139



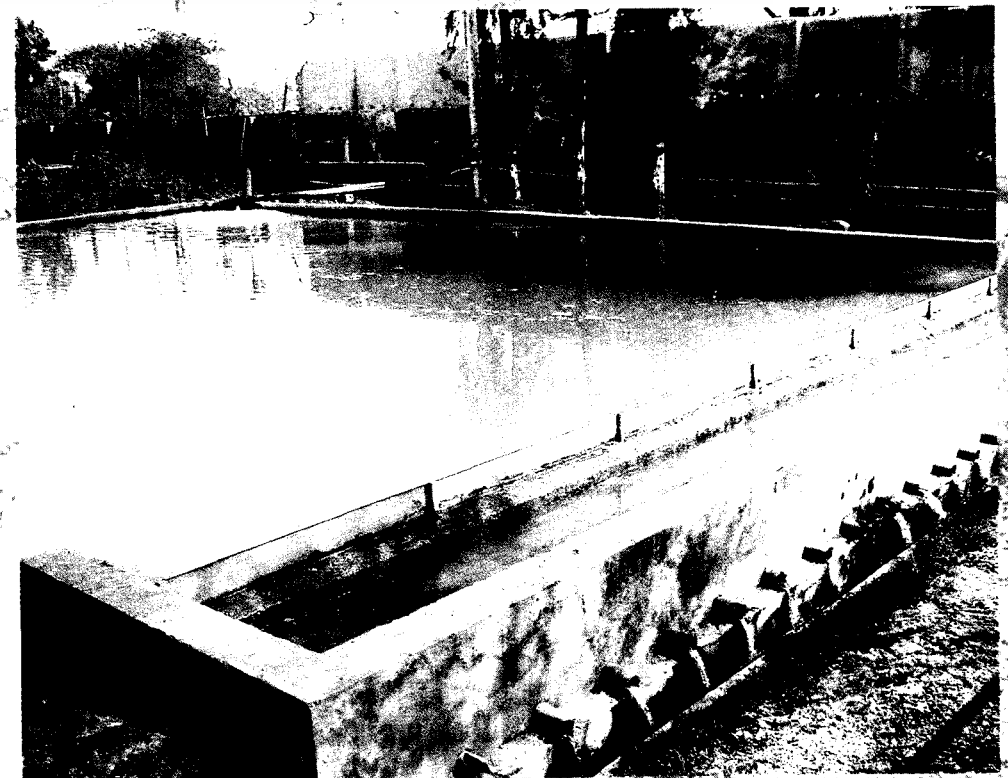
Pond for Rain Water Harvesting



Extra
care to be
environment
FRIENDLY

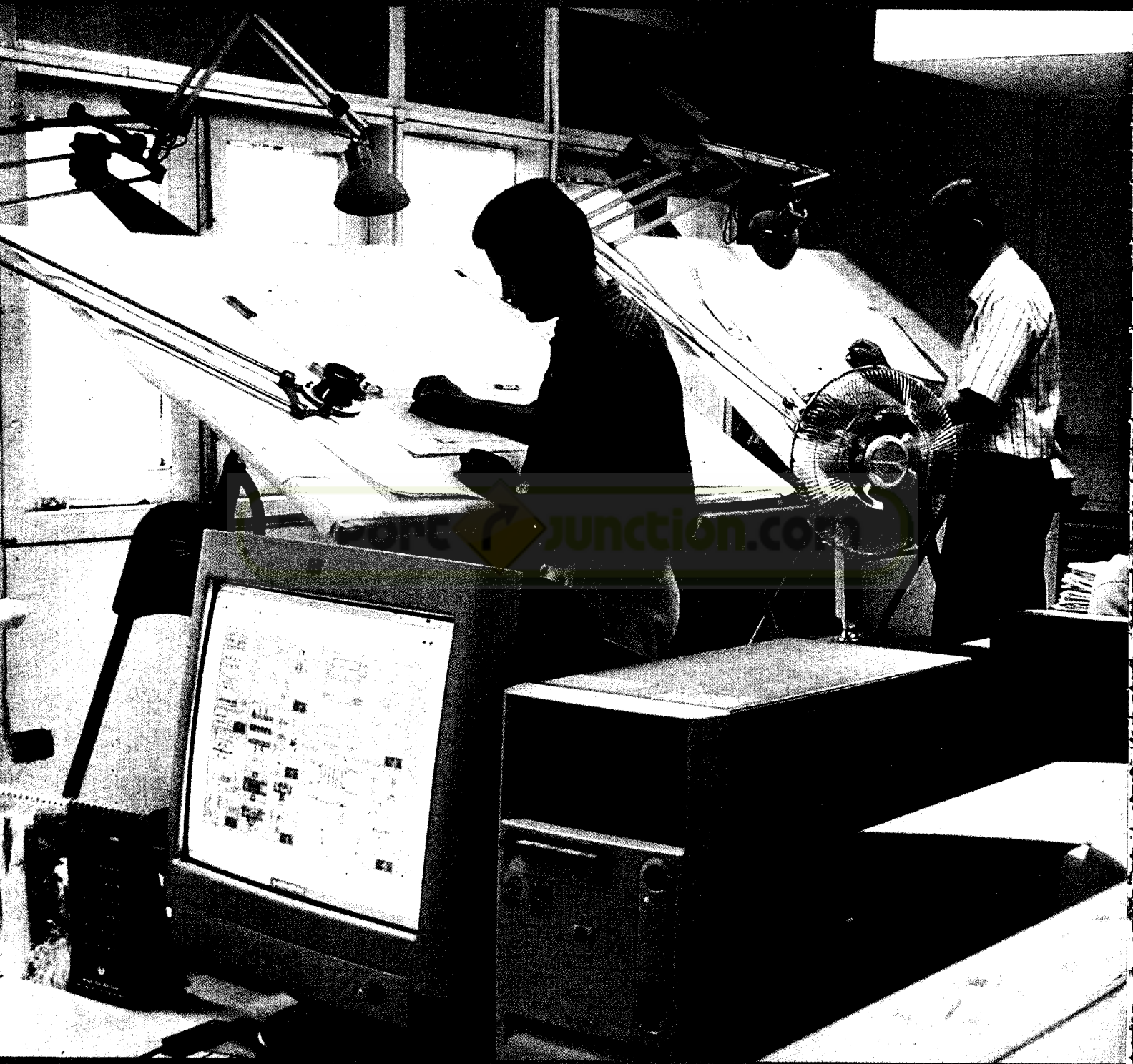


Ambient Air Monitoring Station



Underground Drainage System with Centralized Lagoon

Exide Energy Storage battery
technology is not at the cost of
the environment. Every
manufacturing unit maintains
exemplary pollution control and
nurtures its environs with care.



Design and Drawing Room

The cutting edge of INNOVATION



Analytical Laboratory

The R & D Centre at Kolkata keeps Exide in the front rank of international technology, with patents and inventions that enable the company to step up its global ambitions.



Material Testing Laboratory

Test House 1

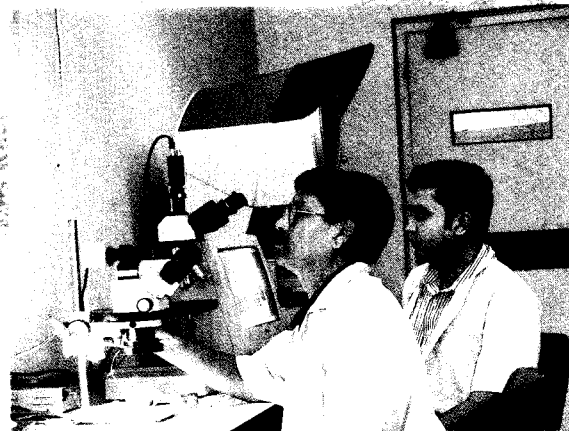


Analytical Laboratory

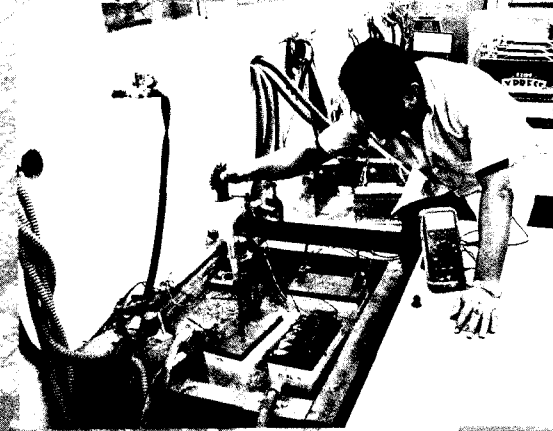


Designing batteries
for better
VALUE

Scientists and technologists continuously upscale design parameters to improve the performance of Exide products and bring down costs to improve value-for-money.



Material Testing Laboratory



Test House 2 - Water Bath

Research & Development Centre



In the forefront of FORMATION

Learn more from New Formations to go Formation

