

ANNUAL
REPORT 22-23

HBL®

An abstract graphic featuring two spheres on the left. The front sphere is white and glossy, while the one behind it is partially visible. A trail of glowing blue and white particles, some of which are small circular icons, extends from the white sphere towards the right. On the right side of the trail is a large, red, glossy sphere. The text "GAINING MOMENTUM" is written in white, uppercase letters across the red sphere. A bright light source at the top of the red sphere creates a lens flare effect. The background is a dark blue gradient.

GAINING
MOMENTUM

HBL POWER SYSTEMS LIMITED

INSIDE THE DOCUMENT



CORPORATE OVERVIEW

About HBL Power Systems	02
About our Business	06
Key Performance Indicators	08
Statement from the Management	10



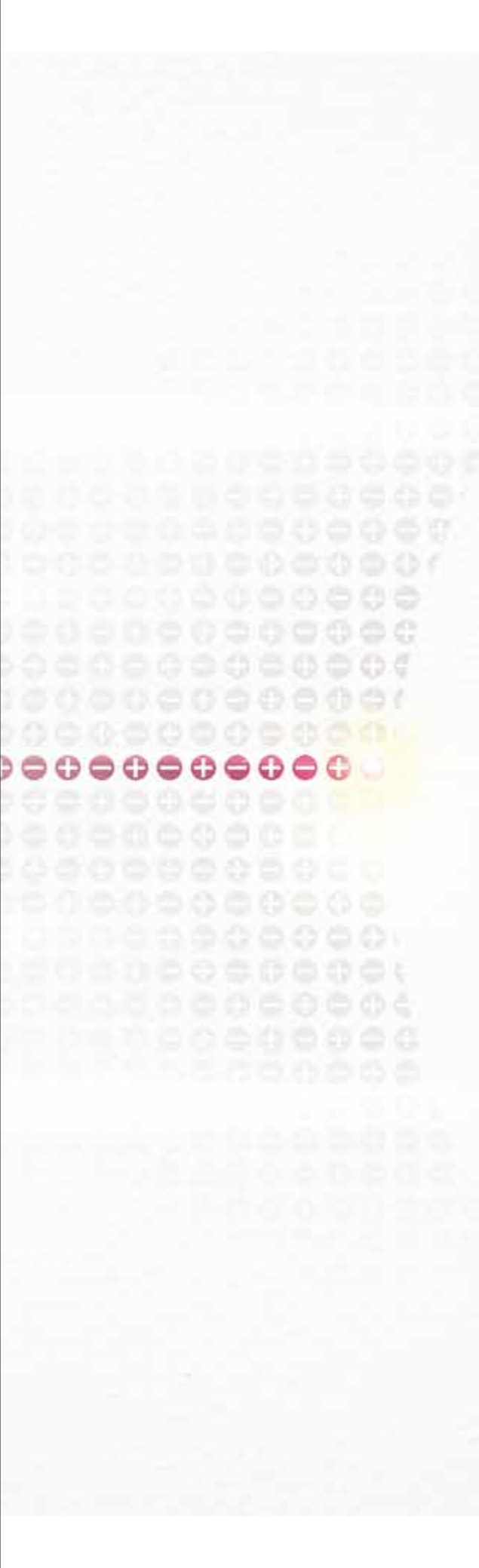
STATUTORY REPORTS

Management Discussion & Analysis	16
Corporate Social Responsibility	36
Corporate Information	38
Notice	39
Directors' Report	52
Report on Corporate Governance	77
Business Responsibility & Sustainability Report	98



FINANCIAL STATEMENTS

Standalone Financial Statements	130
Consolidated Financial Statements	184



EARLIER, WE EMBARKED ON A SAFER
JOURNEY TOWARDS BIG POSSIBILITIES
AND BIGGER PROGRESS.

WE PUT IN THE NECESSARY GRUNT
WORK; FROM FORTIFYING OUR
CORE STRENGTHS TO TAKING A LEAP
TOWARDS SCALING NEW HEIGHTS.

WE ALIGNED OURSELVES TO A STABLE
AND SUBSTANTIAL FUTURE, AND TOOK
SURE AND STEADY STEPS TOWARDS IT.
AND NOW...

OUR JOURNEY IS FINALLY **GAINING MOMENTUM!**

OUR STRATEGIES ARE SHOWING
RESULTS. OUR TEAM IS INCREASINGLY
INSPIRED AND COMMITTED TO
RELENTLESS GROWTH. WE'RE GAINING
A STRONGER FOOTHOLD IN NEWER
GROUNDS AND OUR CORE STRENGTHS
HAVE KEPT US ROOTED & STABLE,
THROUGH IT ALL.

WE'RE GAINING MOMENTUM
TO **ACHIEVE OUR GOAL**
WITH FULL STEAM!

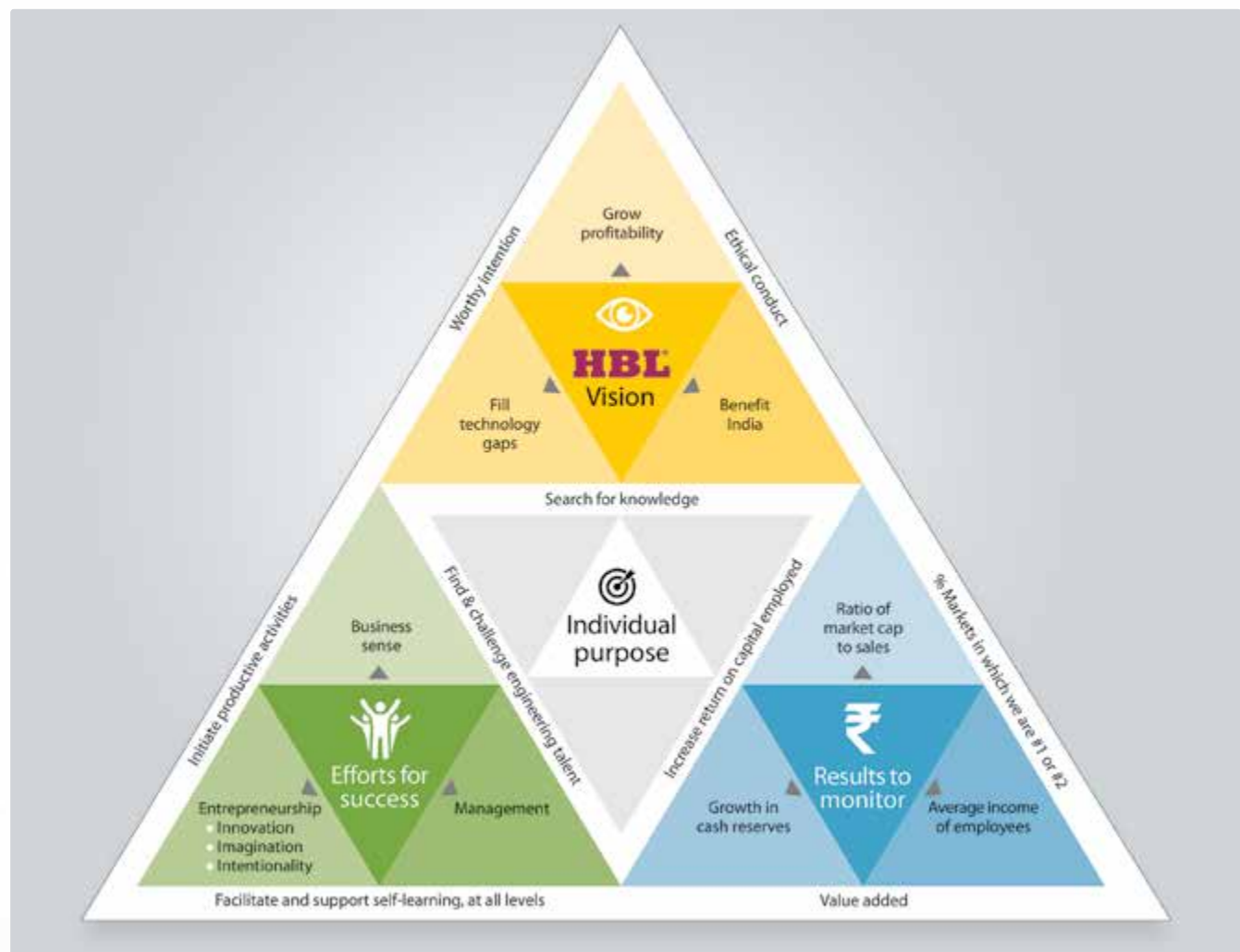
WE ARE INDIA'S LEADING RESEARCH-BASED ENGINEERING COMPANY THAT AIMS TO FILL TECHNOLOGY GAPS IN INDIA BY **DEVELOPING AND MANUFACTURING COMPLEX PRODUCTS AND SOLUTIONS DEMANDED IN INDIA TODAY.**

OUR business strategy has always been to identify technology gaps in India that our intellectual capital can fill through 'indigenous efforts'.

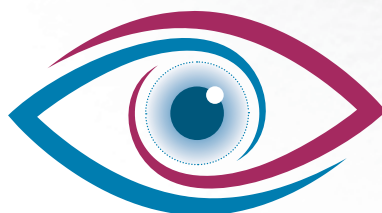
Our team of enthusiastic and energetic experts focus on creating technology-solutions that addresses

challenging applications for key user sectors such as Telecom, UPS, Railways, Power, Oil & Gas, Industries, and Defence, among others. Our power of engineering capability allows us to make a small yet meaningful contribution to making India Atmanirbhar.

Headquartered in Hyderabad, we have five manufacturing facilities located in Telangana and Andhra Pradesh dedicatedly develop and deliver specific products. Our equity is listed on the BSE Limited and the National Stock Exchange of India Limited.



THE TRIANGLE ENCAPSULATES THE ESSENCE AND BEING OF HBL. IT SHOWCASES THE 'WHO', 'WHY', 'HOW' & 'WHERE' OF THE ORGANIZATION.



VISION

TO ORGANISE INDIA'S ENGINEERING TALENT INTO A GLOBALLY COMPETITIVE BUSINESS, WHETHER IN MANUFACTURING OR SERVICES. OUR CHOICE IS TO BE IN BUSINESSES WITH TECHNOLOGICAL CHALLENGES/ ENGINEERING INTENSITY.

5

MAJOR
MANUFACTURING
FACILITIES

50⁺
NATIONS

GLOBAL
FOOTPRINT

1,720⁺

TEAM
STRENGTH

1,350

REVENUE
(₹ CRORE)

167

EBITDA
(₹ CRORE)

95

NET PROFIT
(₹ CRORE)

956

NETWORTH
(₹ CRORE)

324

FIXED ASSETS-NET
(₹ CRORE)

2,640

MARKET CAPITALIZATION
(₹ CRORE)



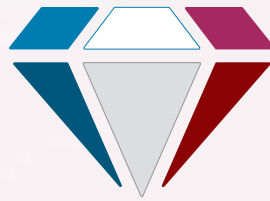
CORPORATE
OVERVIEW



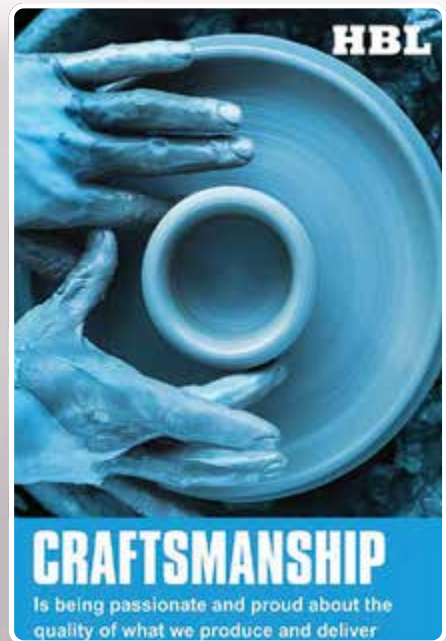
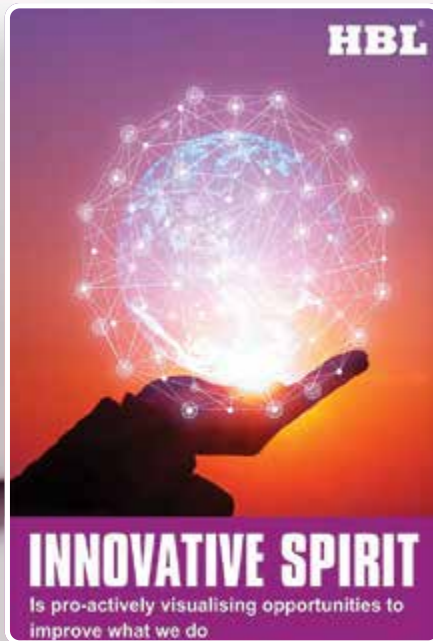
STATUTORY
REPORTS



FINANCIAL
STATEMENTS



VALUES



OUR INTEGRATED FACILITIES



VIZIANAGARAM

Near Visakhapatnam, Andhra Pradesh

Product line: 2V/12V-AGM VRLA & Tubular Gel



SHAMIRPET

Hyderabad, Telangana

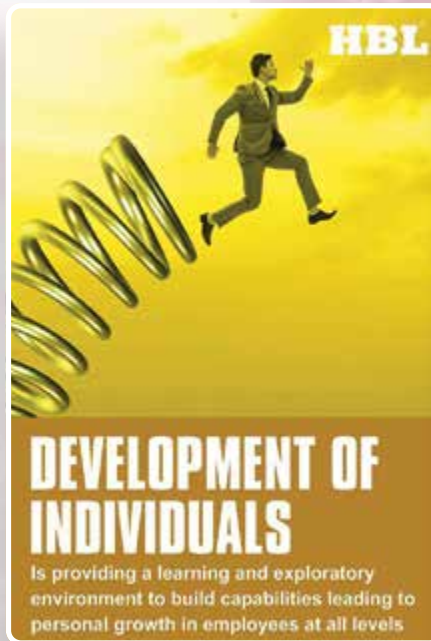
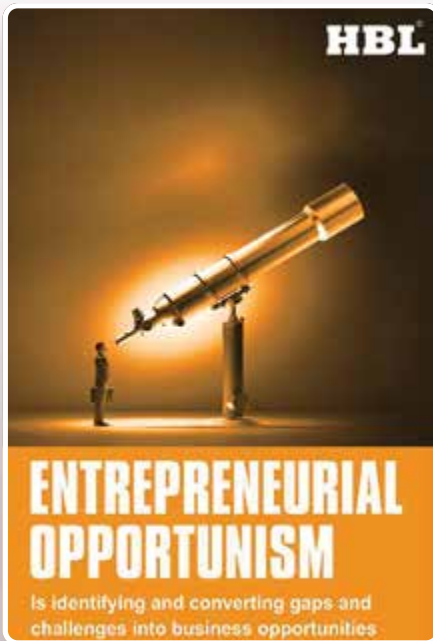
Product line: Ni-Cd & Specialty batteries and power electronics



NANDIGAON

Near Hyderabad, Telangana

Product line: PLT, Lithium-Ion and Submarine Batteries



THUMKUNTA
Hyderabad, Telangana
Product line: Electronics






VISAKHAPATNAM (SEZ)
Andhra Pradesh
Product line: Ni-Cd batteries



YAPRAL (Development Centre)
Hyderabad, Telangana
Product line: Product development initiatives

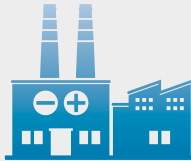
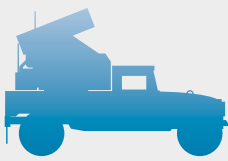

HBL POWER SYSTEMS IS A TECHNOLOGY-DRIVEN ENGINEERING ENTERPRISE THAT **DEVELOPS NICHE SOLUTIONS FOR DEMANDING APPLICATIONS**

BUSINESS CAPABILITIES

			
BUSINESS SECTOR	DEFENCE	INDUSTRY	MOBILITY
HBL CAPABILITIES			
Industrial Batteries	Aircraft, Missiles, Torpedoes, Battle Tanks, Submarines	Nickel Cadmium & Lead Acid in various technologies	Lithium-ion (LFP, Pouch)
Electronics	Communication equipment for Army artillery and other fuses	Battery chargers, Energy storage systems, Battery Management System (BMS)	Train Protection & Train Management Systems, Motor & Vehicle controllers and EV Charging systems
Motors	Torpedo motors	Energy Saving Motors (IE4)	Switched Reluctance Motors & Permanent Magnet Motors for traction
Build to Print manufacturing	Foreign Companies' Offset (local content) obligation	Bringing batteries developed abroad (Technology Readiness Level 5 to 9)	Long Term Evolution (LTE) deployment

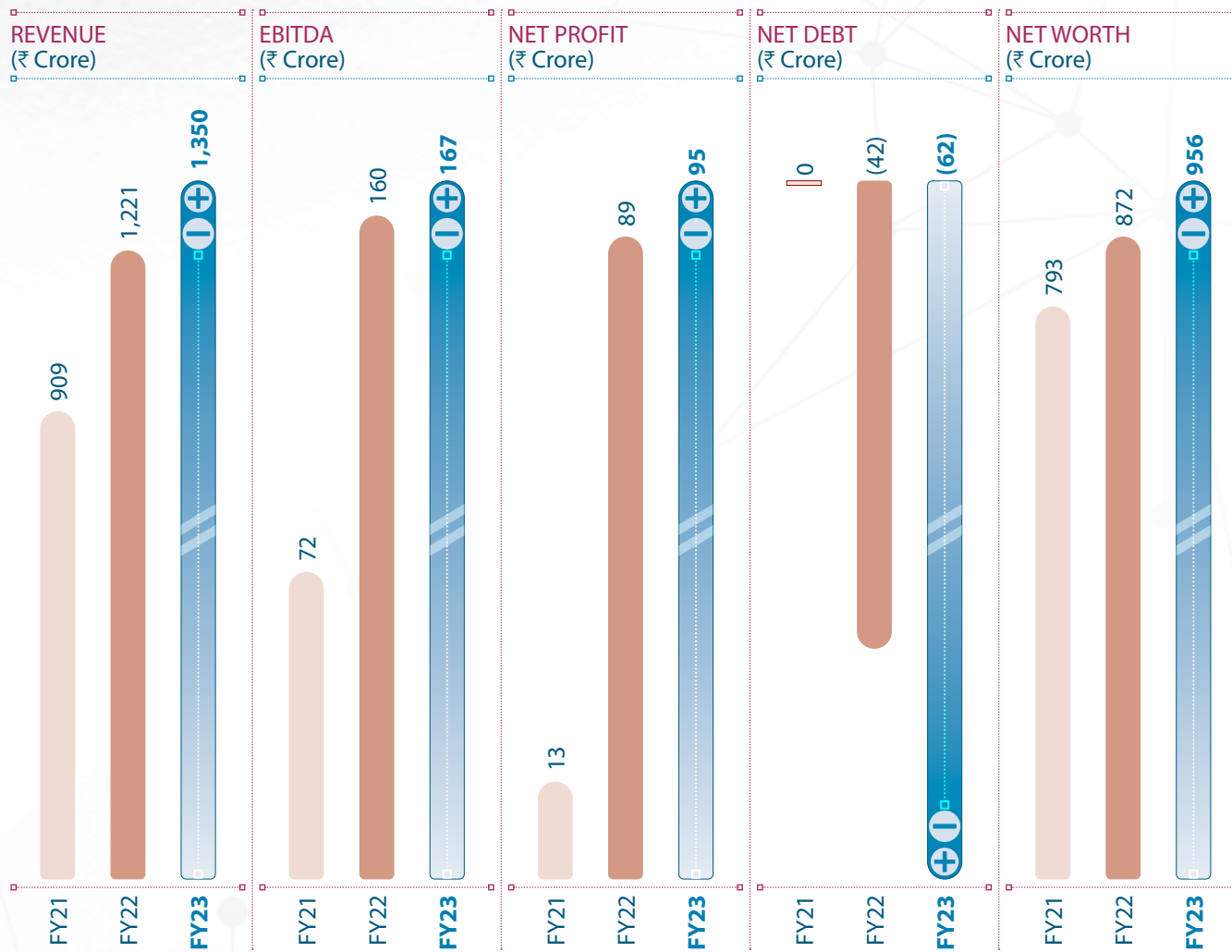
BUSINESS SEGMENTS

The Company operates its business under three primary Segments namely industrial batteries, Defence & Aviation and Electronics for disciplined focus on growing each Segment.

		
INDUSTRIAL BATTERIES	DEFENCE & AVIATION	ELECTRONICS
Only Indian player in the market to have high powered Pure Lead Thin Plate (PLT) battery in their product basket	One of the leading suppliers of batteries for various defence applications	Offered the first ever Train Collision Avoidance System (TCAS) for Indian Railways
World's second-largest manufacturer of Nickel-Cadmium (NCPP) batteries with Pocket Plate, Sintered Plate, and Fibre Plate technologies	Lithium Ion battery technology adopted for defence purposes	Developed Train Management System (TMS) for the Indian Railways- first time ever by a private sector entity
69%	17%	11%
CONTRIBUTION TO TOTAL REVENUE	CONTRIBUTION TO TOTAL REVENUE	CONTRIBUTION TO TOTAL REVENUE

Revenue from other Segments - 3%

KEY PERFORMANCE INDICATORS



3.42

EPS (₹)

122

NET CASH FROM OPERATIONS
(₹ CRORE)

12%

EBITDA MARGIN