

Directors' Report.....	1
Management Discussion and Analysis.....	7
Report on Corporate Governance.....	11
Auditors' Report.....	20
Balance Sheet.....	24
Profit & Loss Account.....	25
Schedules.....	26
Balance Sheet Abstract and Company's .....	47
General Business Profile	
Summary of Financial Information of Subsidiary.....	48
Companies and Statement Pursuant to Section 212 (1)(e) of Companies Act, 1956.	
Auditors' Report on the Consolidated Financial Statements.....	49
Consolidated Balance Sheet .....	50
Consolidated Profit & Loss Account.....	51
Schedules forming part of Consolidated.....	52
Balance Sheet and Profit and Loss Account	

WIND SHIELD  
Supplied to TVS - 3 Wheeler Division

# CNTENTS

## VISION >>

Expanding leadership in our business through people, keeping pace with market trends and technology.

## VALUES >>

We believe in...

- Simplicity by keeping a low profile externally and having clear, frank and effective communication in the organisation
- Teamwork with well-defined responsibilities and accountability
- Relationships of trust amongst people through well-defined responsibility and authority
- According top priority to customer focus through prompt and appropriate response
- Respect and care for all those associated with us by meeting commitments

When we move forward for higher achievements, deeper ideas follow us. We acquire higher resource base, deeper inspiration beckons us. We have diversified strategically and emerged as India's auto components major with presence across the value chain. We explore every possibility to rope in highly developed and new emerging technologies.

But what really works behind us is integrity and commitment of our people. That's why, when we seek **technology** and **innovation**, we treasure our **people** more.



PANEL FRONT  
Supplied to Volvo, Eicher

# PHILOSOPHY



Mr. S. K. Arya  
CHAIRMAN

Dear Friends,

I take this opportunity to talk to you and convey my gratitude for the unabated support and trust you have always reposed in JBM Group and encouraged it to move ahead confidently on the road to progress and development.

I need not mention that in line with its vision, JBM Group has evolved as a people-centric organisation led by a competent team of professionals. I take pride in my team that gives our Group width, proficiency and capability to succeed.

The Group has embraced world-class technology and processes implementing them at all levels in every unit and across all parameters. Flexibility and innovation to respond to the rapidly changing markets and technological conditions have helped us establish ourselves as a 'leader in sheet metal technology'.

Our dedication to quality and cost-competitiveness has led us to several milestones and has invited accolades and prestigious certifications both from global institutions and esteemed customers. It has helped us earn their unflinching support over the years.

At JBM Group, we believe that change is constant. We have constantly moved up the value chain by adding value added products and new assembly lines and spreading wings to different parts of the country. JBM Group has several products on the anvil and has set ambitious targets to grow multifold in the years to come.

Let our core values of simplicity, team work, trust amongst people, customer focus and meeting commitment continue to guide our corporate governance.

# CORPORATE I

OUR ESTEEMED  
BOARD MEMBERS >>



Mr. Ashok Kumar Agarwal  
DIRECTOR



Mr. M.K. Aggarwal  
DIRECTOR



Mr. H.R. Saini  
EXECUTIVE DIRECTOR



Mr. Nishant Arya  
DIRECTOR

>> **CHIEF FINANCIAL OFFICER & COMPANY SECRETARY**

Mr. N.K. Goel

>> **STATUTORY AUDITORS**

Mehra Goel & Co., Chartered Accountants

>> **SHARE TRANSFER AGENT**

MCS Limited

>> **BANKERS**

- Canara Bank • Standard Chartered Bank • Indusind Bank Ltd.
- Royal Bank of Scotland • Citi Bank N.A. • Yes Bank Ltd.
- ICICI Bank Ltd. • Kotak Mahindra Bank Ltd. • Axis Bank Ltd.
- Central Bank of India • Bank of Baroda • HDFC Bank Ltd.

ASSEMBLY REINFORCEMENT PILLAR  
Supplied to Mahindra XYLO



# INFORMATION



FARIDABAD



CHENNAI



GREATER NOIDA



KOSI



NASHIK



SANAND



PUNE



ASSY REINFORCEMENT PILLAR HINGE REAR DOOR  
*Supplied to Mahindra XYLO*

# P ANTS



TUBULAR  
MANIPULATION



3000 T PRESS LINE



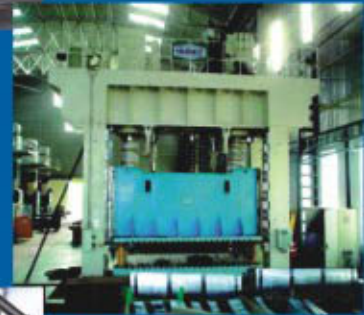
PRESS LINE



PRESS LINE



DIE STORAGE



1200 T PRESS LINE



WELD SHOP



PRESS SHOP



CHASSIS SHOP

# FACILITIES

## PRODUCTS >>



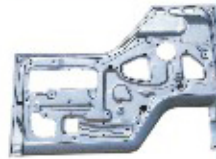
DRUM ASSEMBLY



CORNER MODULE



TUNNEL ASSEMBLY



DOOR INNER



DOOR PANEL



ROOF



CROSS CAR BEAM



PILLAR B INNER



PANEL RR INNER



LOWER ARM ASSEMBLY



BACK PANEL



FRONT CROSS MEMBER



AXLE

PANEL RR INNER  
Supplied to Mahindra XYLO



# PROUC



REAR BUMPER



COVER PLATE LONGITUDINAL



TAILGATE INNER



DOOR BODY OUTER



REAR FLOOR UPPER



BONNET



DASH PANEL



TIPPER



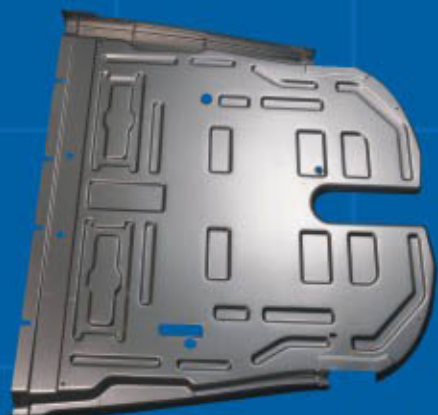
DRAW (UPPER)

# TRANGE

## KAIZEN EXCELLENCE UTSAV >>



## HR TRAINING >>



FLOOR PANEL  
Supplied to TVS - 3 Wheeler Division

# EVELO