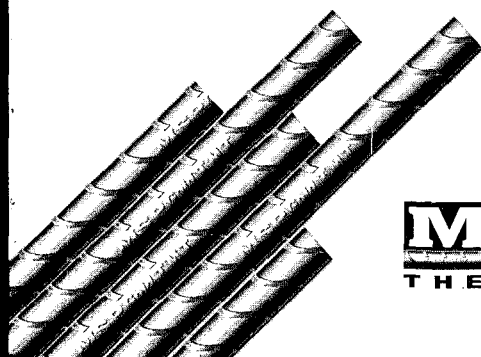
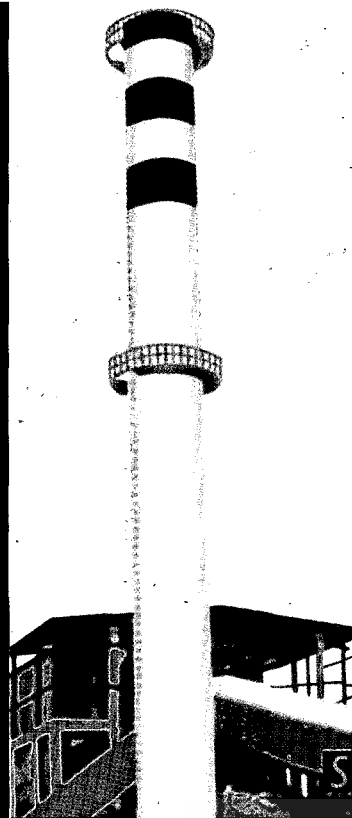




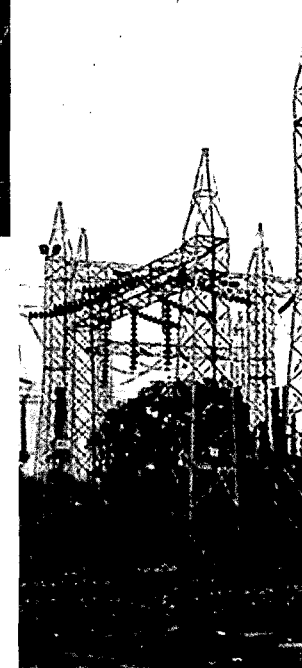
Annual Report 2008-09

MSP STEEL & POWER LIMITED

Strengthening Tomorrow



MSP Gold
THERMEX TMT BARS

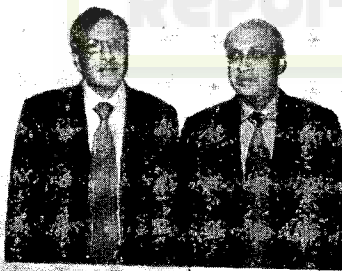
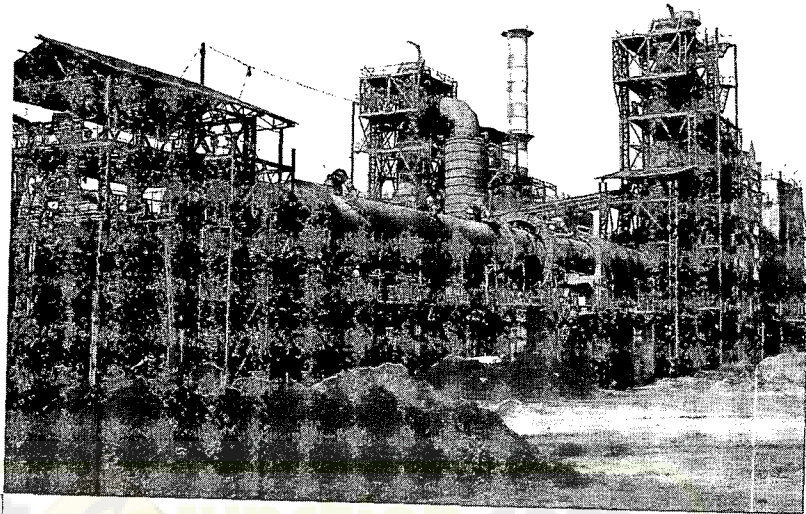




Contents

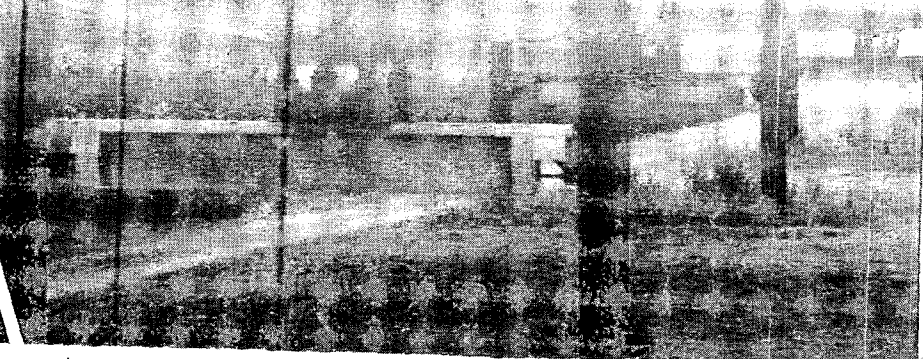
Corporate Identity	1
Notice	2
Management Discussion & Analysis	4
Director's Report	8
Report on Corporate Governance	13
Auditors report with Annexure	22
Balance Sheet	26
Profit & Loss Account	27
Cash flow statement	28
Schedules	29
Form of proxy	60

Strengthening Tomorrow



Mr. S. K. Agrawal Mr. P. M. Agrawal
Managing Director Chairman

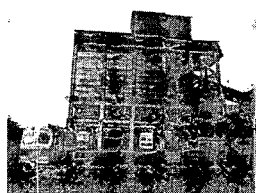
Our aim is to become one of the low cost producer of steel with diversified product portfolio and to grow & maintain the true meaning of MSP thereby strengthening its business relations, maximising its shareholders' value and making India a Wealthy & developed nation. MSP is always looking forwards to grasp opportunities at the right time to grow continuously. With highly skilled and committed workforce, captive raw material sources, nation wide marketing network, available potential of existing assets which have the infrastructure to expand further, MSP is well poised to play a vital role in the current unprecedented growth phase of the country.



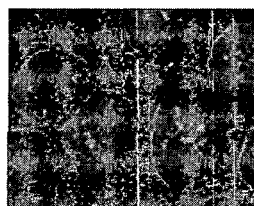
Our Strength



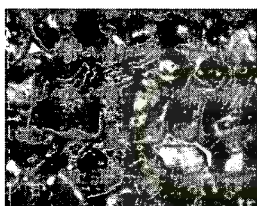
Mines



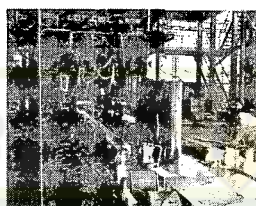
Coal Washery



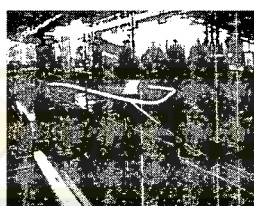
Pellets



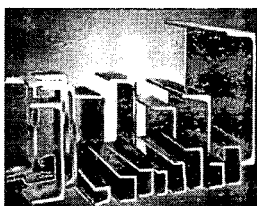
Sponge Iron



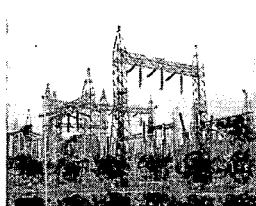
Billets



TMT Bars



Structural Steel



Power Plant



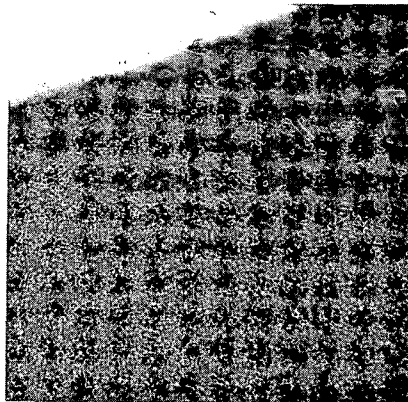
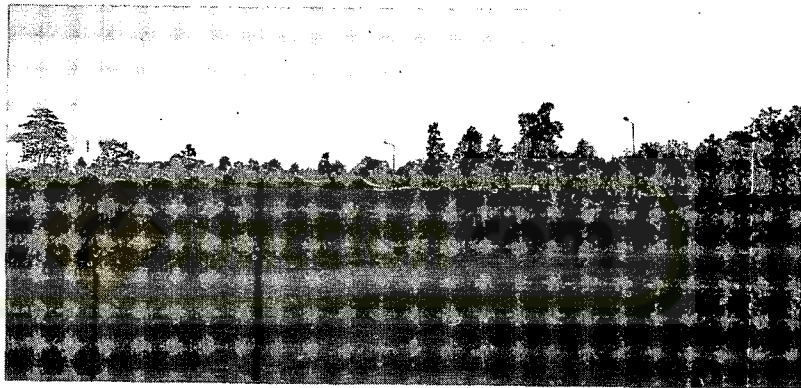
Railway Siding

n.com

Factors of Strength

Due of this Global Downturn where other Companies have been reducing net working capital and rephasing capex, the Company continued to maintain almost the same working schedule because of certain factors which gave MSP Strength to manufacture its product economically.

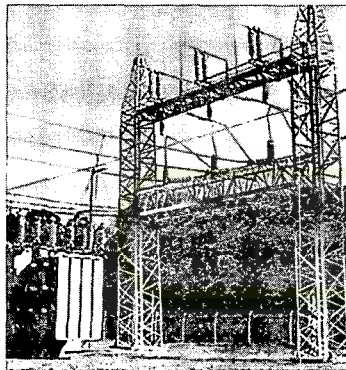
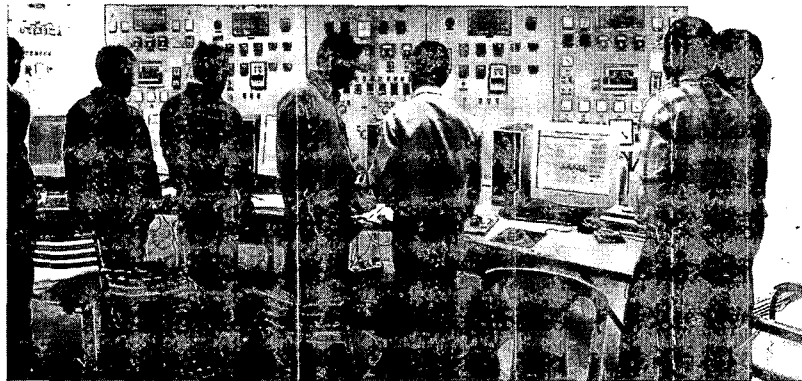
MSP has come a long way strengthening itself from a single DRI plant to a successful integrated steel manufacture extending it chain right from mining to pellets to steel to power to structures/rebars. It has always welcomed new technology thereby successfully commissioning Pellet Plant and using the Industrial waste i.e. iron ore fines to develop Iron Ore Pellets saving valuable National resources.



Ore Fines into "Uniformed Sized Iron Ore Pellets" that can be charged into the blast furnaces or for Production of Direct Reduced Iron (DRI). MSP has successfully commissioned its pellet plant of 3,00,000 TPA from March 2009. This pelletization plant will increase production of sponge iron gradually without increase in fuel cost and will significantly cut the raw material costs.

• Pellet from Iron Ore Fines -

To capitalise on our Intellectual strengths we have Successfully Implemented technology for Pelletizing Iron Ore fines available in India at affordable prices. Pelletizing enables converting Iron



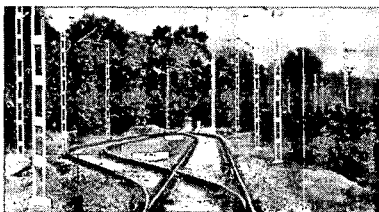
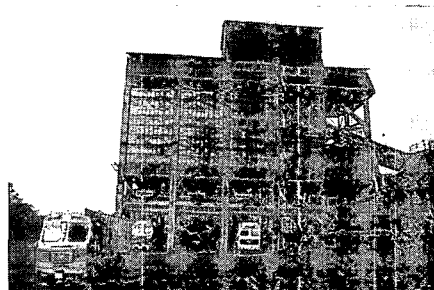
Power from waste heat & washery midlings & Rejects

The 24 MW Waste Heat Power Plant within the factory premises not only reduces the dependence on grid power but also minimize its carbon impact. Low generation cost leads to significantly cost saving.

- Work has started on additional power plants that will take total capacity up to 70 MW.
- Presently, 16 MW of Power is generated by utilizing waste heat from DRI kilns and 8 MW is generated by utilizing Coal Washery Rejects & Middlings

Coal Washery

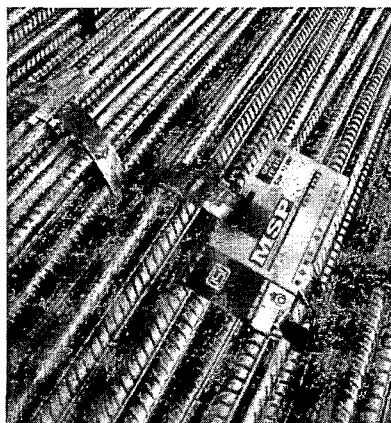
Enhances Coal Quality simultaneously increasing productivity & longevity of its Sponge Iron Plant.



Railway Siding

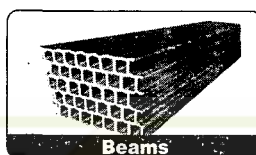
Leads to reduction in transportation cost and eases the logistics of inward & outward.

Strength of Infrastructure

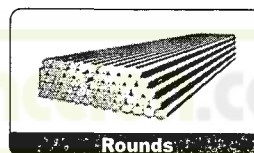


TMT Bars

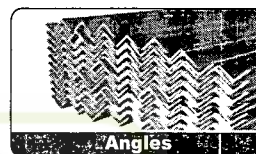
These high quality TMT Bars find its use in core infrastructure development like construction of, bridges, dams, highways, real estate power plants etc



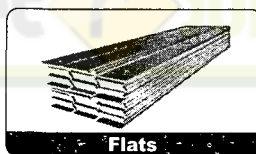
Beams



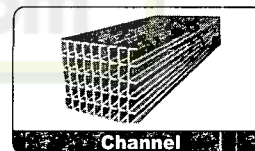
Rounds



Angles



Flats



Channel

Structural Steel

MSP Steel is now likely to produce Thermex TMT bars as well as the full range of structural steels. The Company is setting up a Structural Rolling Mill of 1,28,000 tonne p.a. to manufacture heavy and light structural steel.

The structurals/rebars will be made from Billets manufactured in MSP's SMS Division; which will ensure better quality and lower cost.

Commencement of Structural rolling mill will make MSP among one of the leading producer of long products.

The company has wide network for marketing & distribution of TMT bars. This would give leverage to the Company as the structurals/rebars can be sold easily.

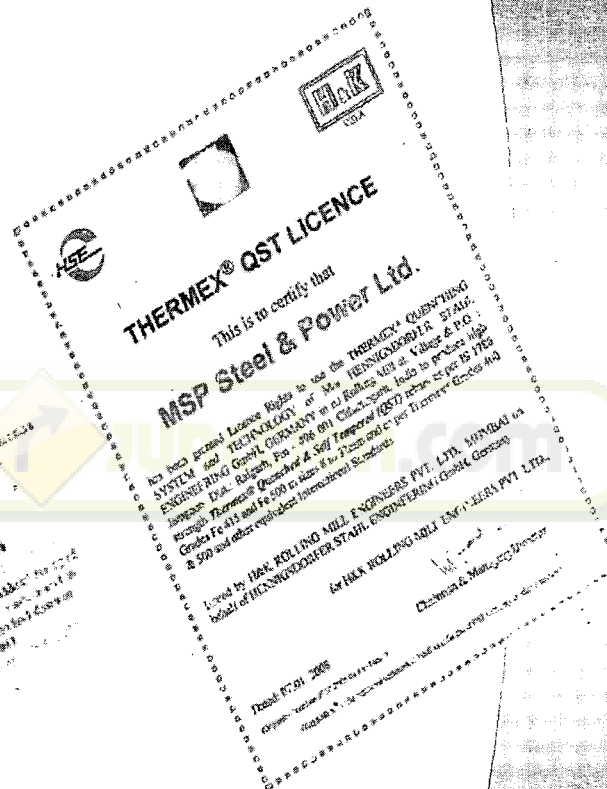
Structural steel would help in infrastructure development of the Company

Quality Strength



For Steel & Power Limited
MSP Steel & Power Limited

Management System Certificate No. 10001
This certificate is valid for the period 01/01/2009 to 31/12/2010
The scope of the certificate is: Steel & Power Limited
The certificate is issued to the company for the purpose of demonstrating its commitment to the quality management system
The certificate is issued to the company for the purpose of demonstrating its commitment to the quality management system



Issued by HAIL ROLLING MILL ENGINEERS PVT. LTD. MANGALU in
behalf of HAIL ROLLING MILL ENGINEERS PVT. LTD.
Director & Managing Director

The Quality of the products is maintained through

- Inhouse Hi- tech testing facilities
- Thermax technologies
- ISI Specifications

Mines of Strength

With the Allotment of coal, limestone mines the image of the Company will transform gradually from a steel manufacturing company to mines to steel conglomerate. Coal Block has been allotted from ministry of Coal and the Production is expected to be started from 2011. The Company has received PL for Iron Ore Mines To enhance its competitiveness, MSP Steel is integrating its operations backwards into the mining activities. The competitive strength of the company today puts it in a position from where it can continue to be among the leaders of the steel industry.

Report  Junction.com

