



# SATIA INDUSTRIES LIMITED

38<sup>th</sup> Annual Report 2018-19



Growing with  
Flying Colours



# TABLE OF CONTENTS

## CORPORATE OVERVIEW

Corporate Information	01
Our Legacy	02
Our Milestones	03
Our Operations	04
Product Range	09
Strategic Advantage	10
Our Footprint	13
Financial Highlights	14
Our Board	15
Managing Director's Message	16
Joint Managing Director's Message	17
Corporate Social Responsibility	18
Management Discussion & Analysis	19

## STATUTORY REPORTS

Notice of Annual General Meeting	23
Director's Report	33
Corporate Governance Report 2018-19	48

## FINANCIAL REPORTS

Auditor's Report	67
Balance Sheet	74
Profit and Loss Account	75
Cash Flow Statement	76
Notes Forming Part of the Financial Statement	78



# CORPORATE INFORMATION

## BOARD OF DIRECTORS

Dr. Ajay Satia - Chairman & Managing Director  
 Mr. R.K. Bhandari - Joint Managing Director  
 Mr. Chirag Satia - Executive Director  
 Mr. Hardev Singh - Director (Technical)  
 Mr. Avinash Chander Ahuja - Director (Independent)  
 Mr. Dinesh Chand Sharma - Director (Independent)  
 Mr. S.K Arora - Director (Independent)  
 Mr. I.D. Singh - Director (Independent)  
 Mr. Ashok Kumar Gupta - Director (Independent)

Mr. Arun Kumar Gupta - Director (Independent)  
 Dr. Mrs. Priti Lal Shivhare - Director (Independent)

## CHIEF FINANCIAL OFFICER

Mr. Ashok Kumar Khurana

## COMPANY SECRETARY & COMPLIANCE OFFICER

Mr. Rakesh Kumar Dhuria

## STATUTORY AUDITORS

### Deepak Grover & Associates

Office: # 45, Opp. Thana Sadar, Red Cross Complex,  
 The Mall, Ferozepur City-152002 (Punjab)  
 Phone No: 01632-503792

## CORPORATE IDENTIFICATION NUMBER

L21012PB1980PLC004329

## REGISTERED/ CORPORATE OFFICE

Malout – Muktsar Road, Village Rupana,  
 Sri Muktsar Sahib - 152032  
 Tel.: 01633-262001, 262215, 263585, Fax: 01633-263499  
 Website: [www.satiagroup.com](http://www.satiagroup.com)

## REGISTRAR AND TRANSFER AGENTS

### Beetal Financial & Computer Services (P) Limited

Beetal House, 3rd Floor, 99 Madangir,  
 Behind Local Shopping Complex,  
 Near Dada Harsukhdas Mandir, New Delhi-110062  
 Contact No.: 011-29961281-83, Fax: 011-29961284  
 E-mail: [beetal@rediffmail.com](mailto:beetal@rediffmail.com)  
 Website: [www.beetalfinancial.com](http://www.beetalfinancial.com)

## BANKERS

Punjab National Bank  
 Central Bank of India  
 Andhra Bank  
 Indian Overseas Bank  
 Union Bank of India





## OUR LEGACY

Satia Industries Limited (SIL), is one of the largest Wood and Agro-based paper manufacturers in India. The company was incorporated by Dr. Ajay Satia in 1980, who has been the driving force behind transforming it into a world class paper manufacturer. Today, Satia produces different grades of paper, which find application in textbooks, notebooks, diaries, directories, photocopying and railway tickets.

SIL's manufacturing facility is located in the wheat belt of Punjab – Muktsar, having a total annual paper production capacity of over 105,000 MTPA. The last three decades have witnessed complete transformation of the company's operations and it has become fully backward integrated having integrated pulping, chemical recovery and power self sufficiency. The company has 540 acres of eucalyptus plantations developed as per Karnal Technology which consumes total treated water discharge and also compliments the future wood raw material requirements.

The company has a strong Pan-India distribution network with 70 plus dealers and 3 branch offices located in Delhi, Chandigarh & Jaipur and employs over 1,264 people.



## VISION

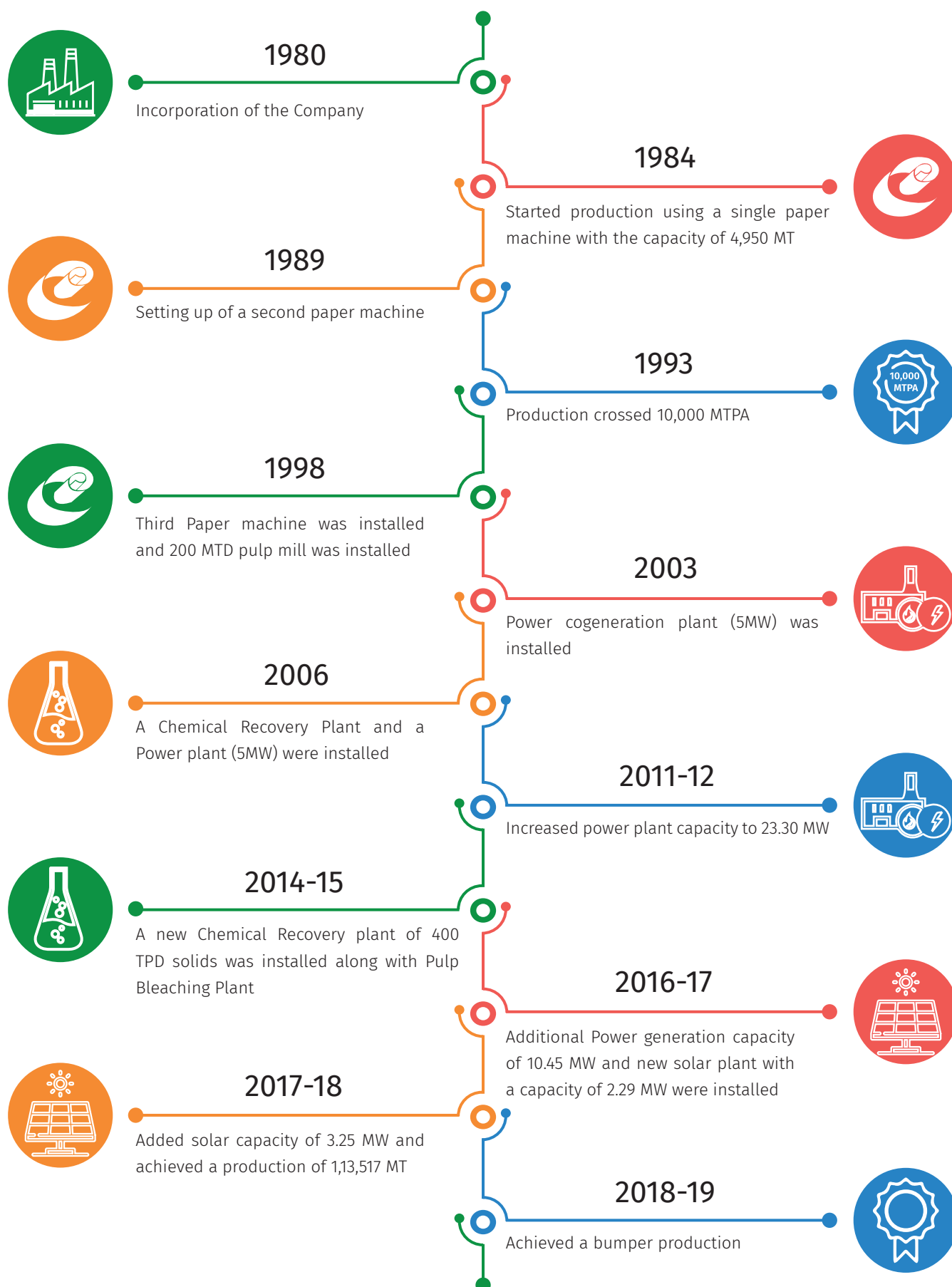
To become a leader in its own segment with excellence in all-round performance creating value for all stakeholders of the company, society and the economy.



## MISSION

To sustain growth with technological upgradation and innovation on a continuous basis for achieving cost competitiveness with sustained profitability, excellence in quality and win customer satisfaction and loyalty.

## OUR MILESTONES



## OUR OPERATIONS



**105,000**  
MTPA  
Production Capacity

### Pulping


SIL has developed inbuilt flexibility and capacity to make pulp using three types of raw materials i.e. Agricultural Residues, Wood Chips and Waste Paper. The plant facility is located in Muktsar, Punjab which is considered the wheat belt of Punjab, and has an abundant availability of wheat straw, wood chips and veneer waste to meet the company's current and future requirements. SIL thus has an advantage in pricing as there is no paper mill in a radius of 100 km.

### Paper

The company started with a single paper machine in the year 1984 and has over the years expanded its capacity to its present level by installing two new paper machines. All three machines have been continuously upgraded technologically to achieve higher speed and lower energy consumptions. The third paper machine has been upgraded to make surface sized maplitho and copier paper quality and it ranks as the best in its own segment.

### Chemical Recovery Facility

The company has two soda recovery boilers (one stand by) with a combined capacity to handle over 400 tonne solids per day. Caustic soda is used to cook and convert raw material into pulp and while washing brown cooked pulp, Black Liquor which is most polluting effluent in the Paper industry is generated. This Black Liquor is concentrated and fired in the chemical recovery boiler to recover 90-95% of caustic soda used in the cooking process. Further the high-pressure steam that is generated in the process is used to produce power. While this enables company to turn waste into wealth, it simultaneously achieves the prescribed standards of effluent discharge.



**400**  
Solids TPD  
Chemical Recovery  
facility



## Power Generation

To secure a reliable and quality source of power supply without any trippings, the company has invested and achieved self sufficiency in power over a period of time by establishing 27.95 MW cogeneration power plant based on biomass as its fuel. Rice husk which is being used as fuel is abundantly available at a competitive price in the area. As this is considered as green energy; the company earns Renewable Energy certificates (REC). These certificates are traded on the energy exchanges and are an additional source of income for the company.

SIL has also installed a solar power plant with a capacity of 6.5 MW.

## Effluent Discharge Handling

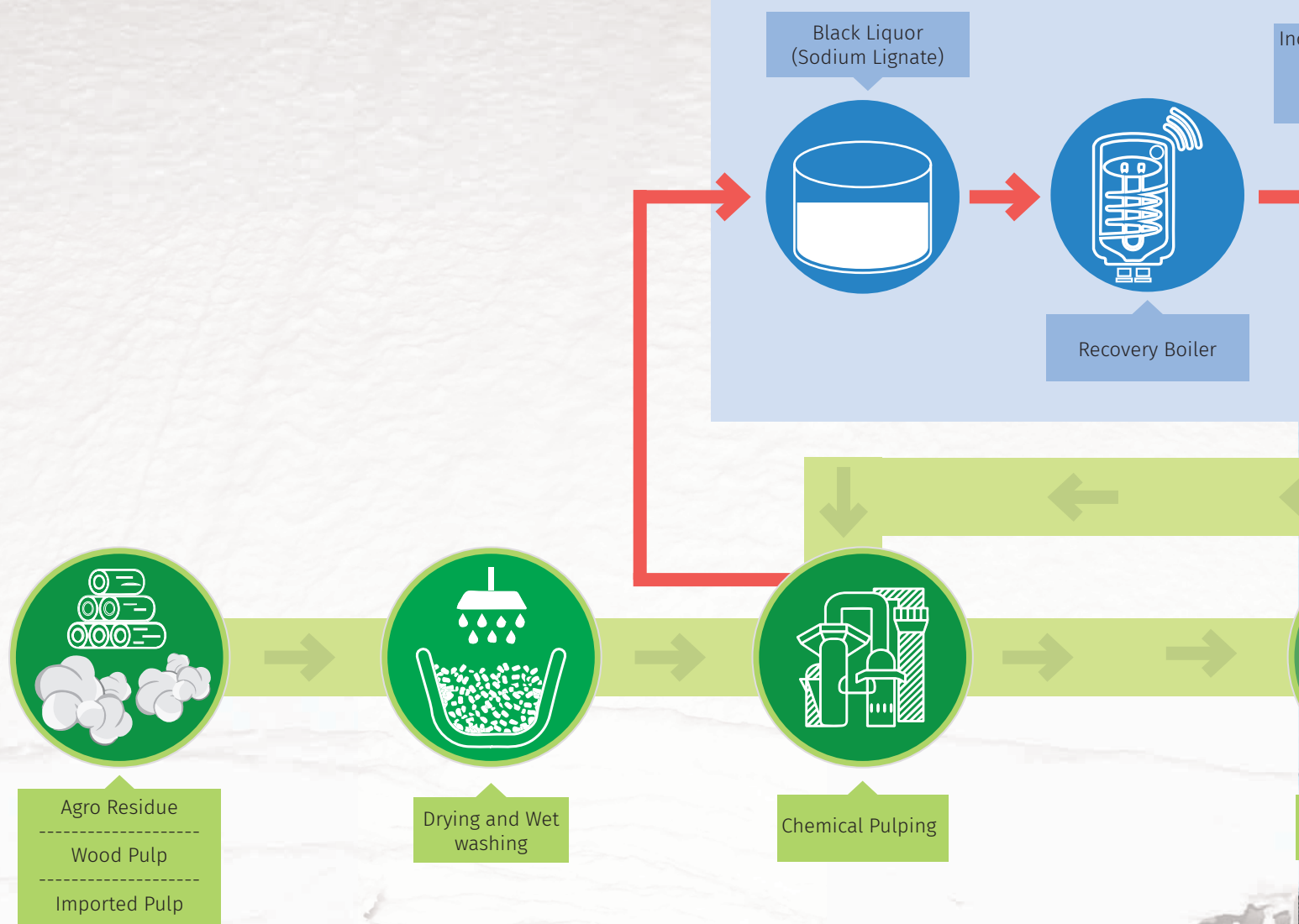
SIL is conscious of its responsibilities and commitment to the sustainability of the environment, society and law of the land. Hence all effluents are treated to the desired standards and no effluent is discharged into any water body of the state.

Based on the research done by Central Soil Salinity Research Institute, Karnal even popularly known as Karnal technology there was an interesting revelation made. It was found that in the case of Eucalyptus trees planted on ridges and effluent water flowing through the burrows, the eucalyptus plant acts as natural pump lifting water and evaporating it through its leaves into the atmosphere which increases land capability to handle more water on continuous basis.

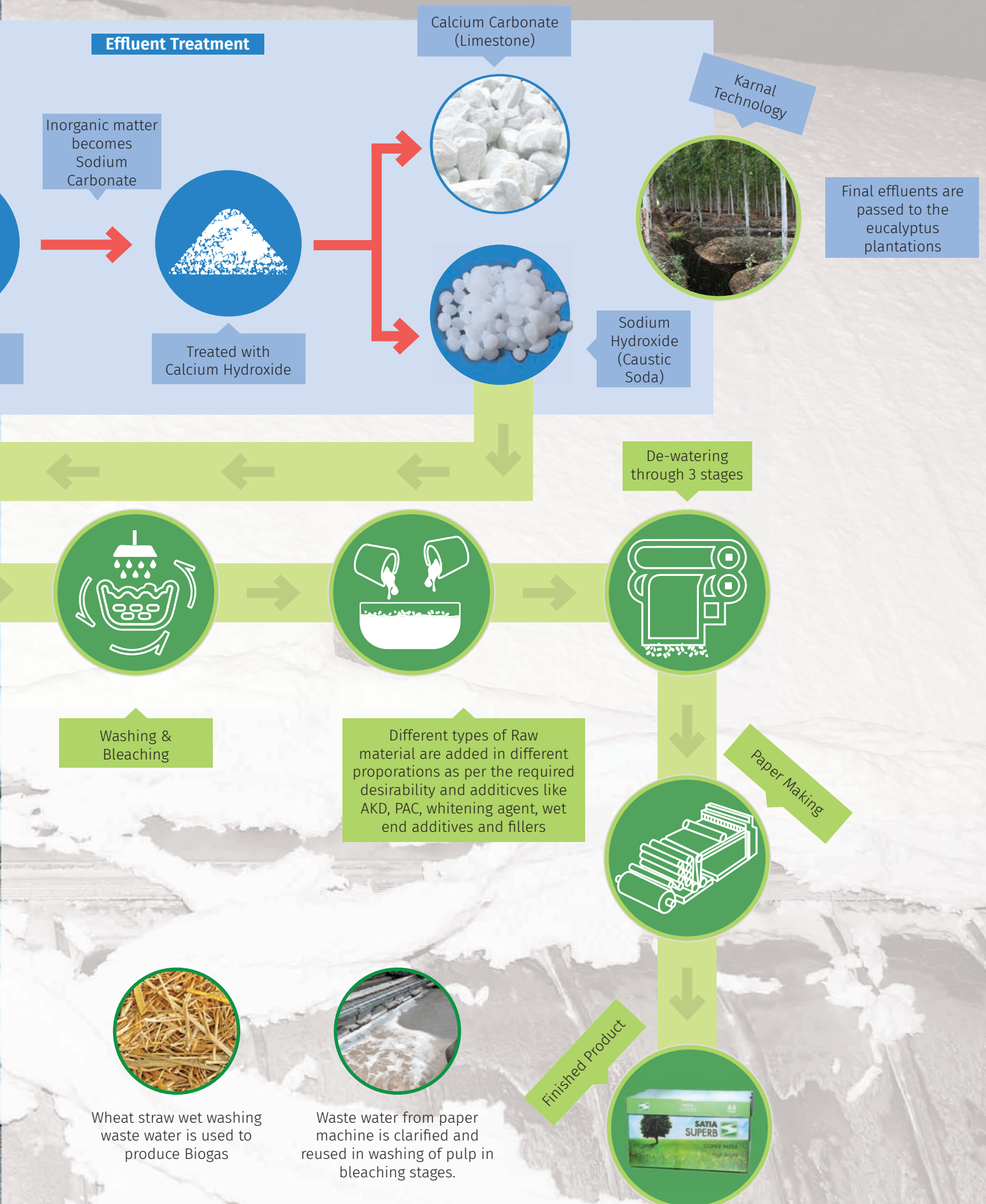
Based on this study, SIL has planted Eucalyptus trees in over 540 acres. This plantation gives multifold benefits as it not only handles our total treated effluent; it also supplements the company's future raw material requirements.



## PAPER MAKING PROCESS











## OUR INFRASTRUCTURE

