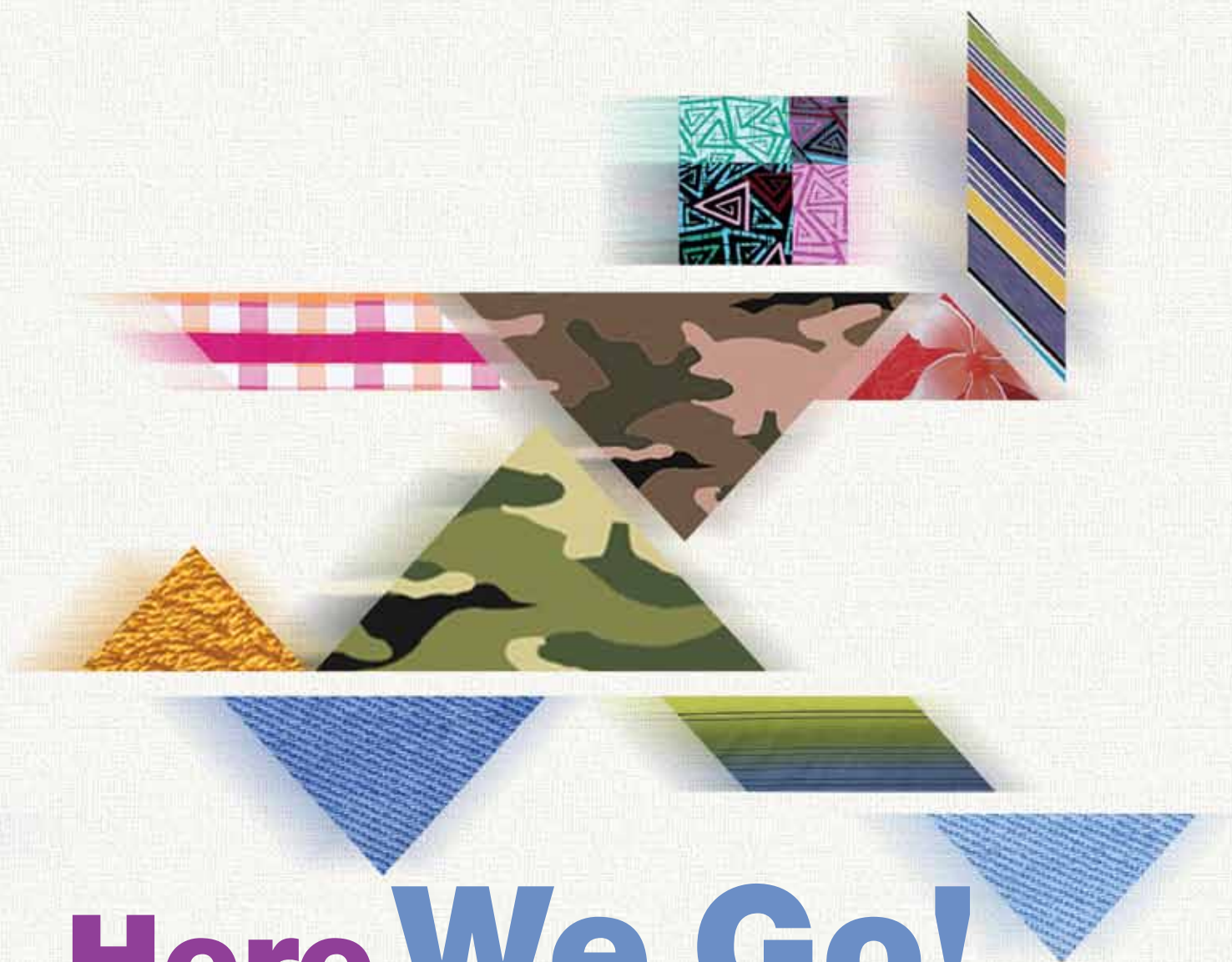




SHRI LAKSHMI COTSYN LIMITED  
23rd Annual Report 2010 -11



# Here We Go!

Accelerating growth across multiple verticals



## FORWARD LOOKING STATEMENT

In this Annual Report, we have disclosed forward-looking information to enable investors to comprehend our prospects and take investment decisions. This report and other statements - written and oral - that we periodically make, contain forward-looking statements that set out anticipated results based on the management's plans and assumptions. We have tried wherever possible to identify such statements by using words such as 'anticipate', 'estimate', 'expects', 'projects', 'intends', 'plans', 'believes' and words of similar substance in connection with any discussion of future performance. We cannot guarantee that these forward-looking statements will be realised, although we believe we have been prudent in assumptions. The achievements of results are subject to risks, uncertainties and even inaccurate assumptions. Should known or unknown risks or uncertainties materialise, or should underlying assumptions prove inaccurate, actual results could vary materially from those anticipated, estimated, or projected, readers should keep this in mind. We undertake no obligation to publicly update any forward-looking statements, whether as a result of new information, future events or otherwise.

# Contents

## Corporate overview

Growing momentum **04**

## Performance review

Financial highlights **08**

Significant developments in 2010-11 **11**

## Strategic review

CMD's message **12**

Capacities are here **14**

Growth is here **16**

Potential is here **18**

## Visibility

Going global **20**

Our brands **22**

Awards and accolades **23**

SLCL in news **24**

Profile of Directors **26**

## Statutory reports

Management Discussion and Analysis **28**

Notice **38**

Directors' Report **44**

Corporate Governance Report **50**

## Financial statements

Consolidated **63**

Standalone **78**





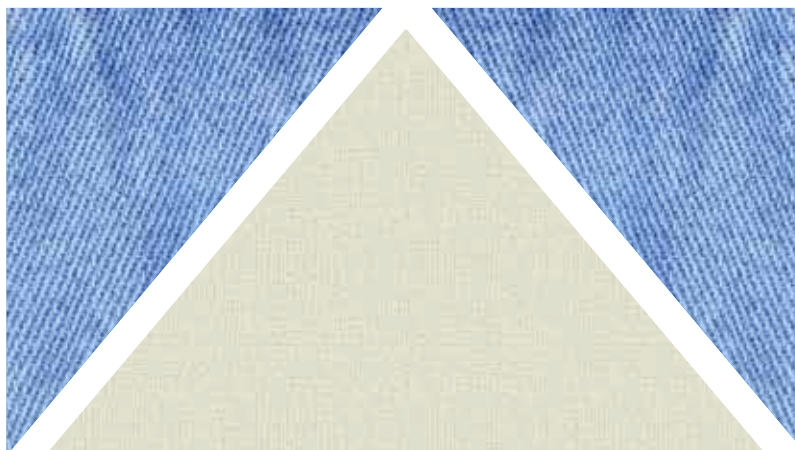
Going ahead and rediscovering one's potential is a corporate imperative at Shri Lakshmi, irrespective of market realities.

This is reflected in our continuous research and development, capacity expansion and business diversifications.

The journey has taken us far and wide: to multiple products from value-added innovative textile products, armoured vehicles and other defence solutions and various markets nationally and internationally.

We have now reached a juncture in our corporate existence when we are fully equipped to accelerate our pace. With developing competencies and widening business opportunities, Shri Lakshmi is looking forward to new product lines, brand-enhancing clients and escalating revenues.

**Tough or smooth, whatever may be the going we put our heart in things we do. Then there is no limit to whatever can be achieved.**





# Corporate Information

## BOARD OF DIRECTORS

**Dr. M.P. Agarwal**, Chairman cum Managing Director

**Mr. Pawan Kumar Agarwal**, Joint Managing Director

**Mr. Devesh Gupta**, Dy. Managing Director

**Mr. Dileep Bajaj**, Executive Director

**Mrs. Sharda Agarwal**, Executive Director

**Mr. R. K. Garg**, Independent Director

**Dr. G.N. Mathur**, Independent Director

**Dr. J.V. Rao**, Independent Director

**Mr. S.K. Mangol**, Independent Director

**Mr. K.D. Gupta**, Independent Director

**Mr. Ram Sharan Srivastava**, Independent Director

## COMPANY SECRETARY & FINANCE CONTROLLER

**Mr. Rakesh Kumar Srivastava**,

## PRESIDENT WORKS

**MR. B.R. GARG**

## STATUTORY AUDITORS

M/S Pradeep & Associates  
Chartered Accountants  
27/78 A, Gagan Deep Complex,  
Birhana Road, Kanpur-208001  
Ph. No. (0512)- 2313665

## INTERNAL AUDITORS

M/S Ajai Shanker & Company  
Chartered Accountants  
112 / 206-A, Swaroop Nagar,  
Kanpur-208002  
Mob. No. 09839211408

## COST AUDITOR

Mr. A.K.Srivastava  
96 Harjender Nagar, Kanpur-208007  
Mob. No. 09839116989

## SECRETARIAL AUDITOR

Mr. Sarvesh S. Srivastava  
117/ Q / 454, 209, Indrapuri  
Sharda Nagar, Kanpur-208025  
Mob. No. 09839084865

## LEGAL ADVISOR

Mr. Naresh Kumar Srivastava  
Advocates  
96/18, Sri Nivas Garden,  
Colonelganj, Kanpur-208001  
Mob. No. 09335503942

## P. R. ADVISOR

Adfactors Pr Pvt. Limited  
Shalaka Maharshi Karve Marg,  
Cooperage, Mumbai-400021  
Ph. No. (022)- 22813565

## BANKERS

1. Syndicate Bank
2. Central Bank Of India
3. Bank Of Baroda
4. Union Bank Of India
5. Canara Bank
6. Punjab National Bank
7. State Bank Of Patiala
8. Allahabad Bank
9. Indian Bank
10. IDBI Bank Limited
11. EXIM Bank
12. State Bank Of Travancore
13. Saraswat Co-Operative Bank
14. State Bank Of Mysore
15. Andhra Bank

## OVERSEAS BANKERS

1. PNB International Limited, London
2. Canara Bank, U.K.

## REGISTERED OFFICE

19/X-1 Krishnapuram  
G.T Road, Kanpur, U.P.-208007  
Ph. No. (0512)-2401492, 2402893  
Fax No. 91-512-2402339

## CORPORATE OFFICE

C-40, Sector-57, Noida. U.P.  
(0120)-4544780

## U.S. OFFICE

Suite # 627-629, 7 West, 34th Street,  
NewYork, NY-10016  
Ph No.: 212-212-0770

## SUBSIDIARY COMPANIES

### 1) Shri Lakshmi Overseas (Fzc)

Saif Zone P.O.8000, Sharjah, U.A.E.

### 2) Shri Lakshmi Defence Solutions Limited

Rahsoopur Gate No. 133, Tehsil Bindki,  
Industrial Area, G.T.Road, Distt. Fatehpur

## REGISTRAR & TRANSFER AGENTS

M/S Abhipra Capital Limited  
GF-58-59 World Trade Centre,  
Barakhamba Lane, New Delhi-110033  
Ph. no.:+91 11-42390909; 30750800  
Fax:+91 11-27215530

## UNITS

### (a) Malwan Unit

Upside Industrial Area  
P.O. Malwan Dist. Fatehpur, U.P.  
Ph. No. (05181)-248669

### (b) Aung Unit

P.O.Aung, Gt Road, Dist. Fatehpur, U.P.  
Ph. No. (05181)-251184 / 48

### (c) Abhaypur Unit

PO Ashapur, Abhaypur, G. T. Road  
District- Fatehpur (U.P.)

### (d) Rewari Bujurg Unit

Village & Post – Rewari Bujurg  
Pargana & Tehsil - Bindki  
Dist. Fatehpur, U.P.

### (e) Rahsupur Unit

Village Rahsupur  
Dist. Fatehpur, U.P.

### (f) Noida Unit

C-40, Sector-57,  
Noida  
Ph. No. (0120)-4722700

### (g) Roorkee Unit

Dev Bhoomi Industrial Estate,  
Village Banta Kheri, Tehsil Roorkee,  
District Haridwar, Uttaranchal  
Ph. No. (01332)-231961

### (h) Sonapat Unit

Village-Libaspur, District- Sonapat, Haryana  
Ph. No. (0130)-2381579

## WEBSITE

[www.shrilakshmi.in](http://www.shrilakshmi.in)

## E-MAIL ID

[shri@shrilakshmi.in](mailto:shri@shrilakshmi.in)

## CORPORATE IDENTITY NUMBER (CIN)

L17122UP1988PLC009985

## DEMAT ISIN NSDL & CDSL.

INE851B01016

## LISTING

### Bombay Stock Exchange

Floor 25, P.J. Towers,  
Dalal Street, Mumbai-400001  
Ph. No. (022) – 2272134

### National Stock Exchange

5th Floor, Exchange Plaza,  
Bandra (E), Mumbai-400051  
Ph. No. (022)- 26598100

### U.P. Stock Exchange

“Padam Tower”, Civil Lines, Kanpur-208002  
Ph. No. (0512)- 2338220

### Singapore Stock Exchange

2, Shenton Way # 19-00,  
SGX Centre 1, Singapore-068804

## SCRIP CODE

**BSE:** 526049

**NSE:** SHLAKSHMI

## BLOOMBERG CODE

SHRI LAKSHMI IN

## REUTERS CODE

SHLK.BO





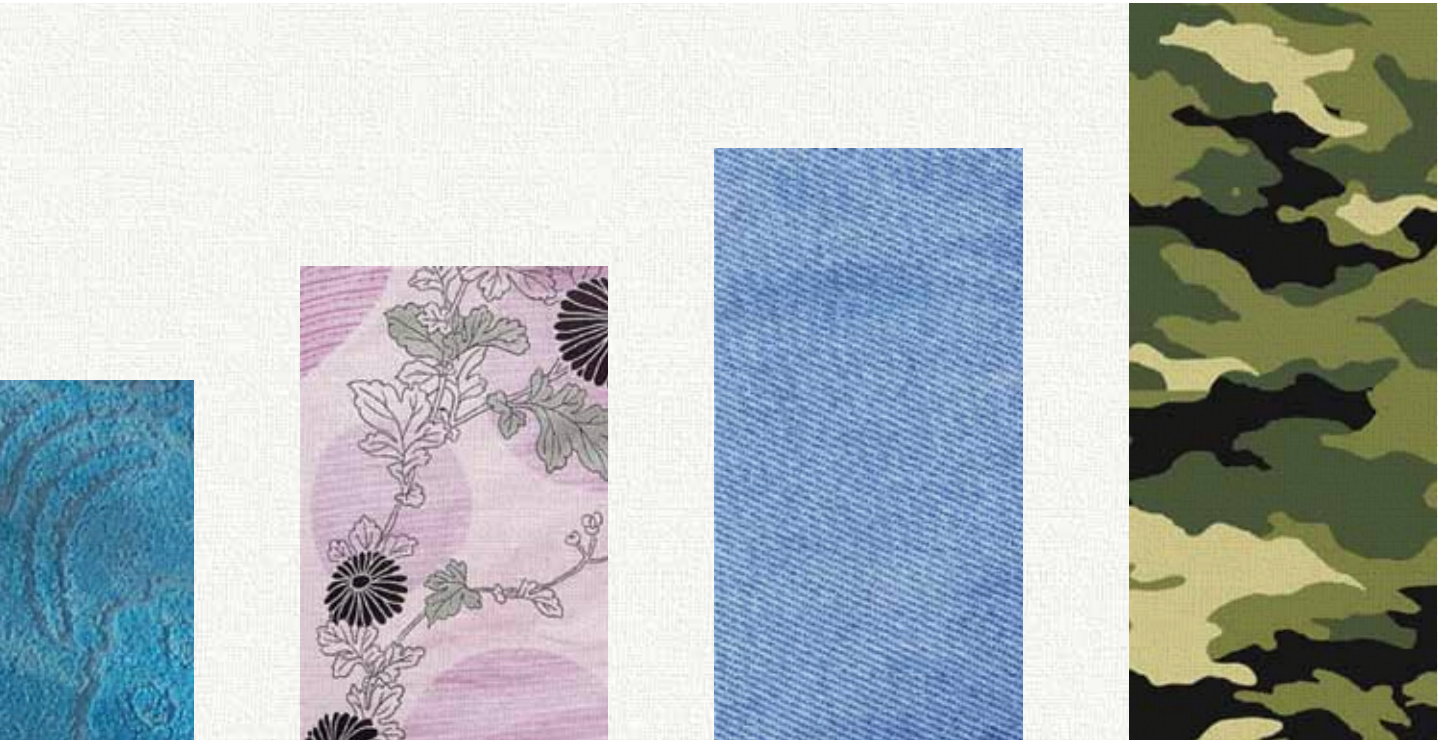
# Growing momentum



Shri Lakshmi Cotsyn Limited (Shri Lakshmi) is among India's fastest growing, Indian conglomerates with a strong presence in the home and technical textile segments. The efficient research and development capabilities and engineering excellence have enabled the organisation to diversify its offerings from value-added innovative textile products to armoured vehicles and other defence solutions.

---

Inception	: August 1993 by Dr. M. P. Agarwal, a renowned cost accountant-turned-industrialist
Headquarters	: Kanpur
Manufacturing facilities	: Malwan, Aung, Abhaypur, Rewari Bujurg, Rahsupur, Noida (Uttar Pradesh), Roorkee (Uttarakhand) and Sonapat (Haryana)
Listed on	: BSE, NSE, SGX (Bonds) and the UP Stock Exchange
Promoters' holdings (%)	: 41.33
NSE Code	: SHLAKSHMI
BSE Code	: 526049



## Competitive advantages

- Integrated across the textile value chain - yarn manufacture, weaving, processing and dyeing to garmenting and retailing
- Diversified product offerings - home textiles, technical textiles to defence related armoured vehicles
- Market leader in the fusible interlining with over 30% market share in the organised sector
- Extensive marketing and distribution network through 1250 multi-branded outlets (MBOs)
- Large domestic and international client base
- Environment-friendly and technology-efficient processes, in-house chemical auxiliary unit and 16 MW captive co-generation power plants
- Efficient R&D facilities for innovative products
- Internationally benchmarked quality standards through advanced TQM methodologies
- Creative design offerings (exclusively copyrighted)





## Product offerings

- Denim Fabric, Bottom Weight Fabric, Wider Width Fabric, PU Coated Nylon Fabric, Home Furnishing and Bed Linen (Malwan Unit)
- Blended Suiting and Shirting, Cotton Fusible Interlining, Camouflage Uniform Fabric and Technical Textile Fabric (comprising Fire Retardant Fabric, Water Proof Fabric, NBC Fabric, Breathable Fabric and Camouflage Printed Fabric) (Aung unit)
- Technical Textile Fabric (which includes Flex Fabric , Black-out Fabric, Multi-Spectrum Camouflage Net (MSCN), Cotton Fusible Interlining and NBC Fabric) (Rewari Bujurg unit)
- Embroidery and Lace Fabric, Quilted Fabric (Sonepat unit)
- Comforters, Quilted Fabrics (Noida unit)
- Denim Jeans, Cotton Casual Trousers, Men's Knitted Shirts and T-Shirts, Ladies Fashion Wear (Roorkee unit)
- Terry Towels (Abhaypur unit)
- Bullet proof jackets, sleeping bags, combat helmets, IR camouflage nets, ballistic body armour, bullet proof helmets, bomb blankets, web equipment, armoured and mine protected vehicles (MPV) at Rashupur unit of SLDSL\*

\*SLDSL – Shri Lakshmi Defence Solutions Limited, Shri Lakshmi's subsidiary



## Features of our armoured and mine protection vehicles

### Drona MPV

- Armoured troop carrier to protect against mine explosions
- Possesses front fenders and the hood, attached to the chassis to reduce the shock against blast that is transmitted to the cabin
- Front wheel base with intelligent architecture and a 'V' shaped armouring cell on the rear wheels protect the vehicle against mine detonation under the wheel and diverts the impact of explosion, outwards, thus minimising damage to the crew cabin

### Viper

- Fast moving attacking armoured vehicle
- Possesses four side doors, a single rear luggage door, rotating turret and cross-country run flat tyre, a pick-up van style for additional and heavy artillery payload
- Capacity to carry a total crew complement of six
- Armoured to equip European B7+ armour

### Dhruv

- A patrol vehicle for police forces to tackle problems in urban areas
- Comfortable seating arrangements for a fully equipped response team of 10 to 12 people built on the Ford 550 American chassis

- Specialised air-conditioned vehicle with working space, rotating turrets and exceptionally viewing large armoured glass
- Developed an Indian right hand drive chassis with a B4 protection level (provision to upgrade to B7)
- Run flat tyres and an excess payload of four tons (post armouring) with an ability to enjoy a speed up to 95 kilometres per hour

### Sherpa MK7

- Light armoured vehicle configured to carry a tactically equipped crew of up to 10 persons, fitted with four side doors and either a single rear door or 30-70% double rapid deployment doors
- Mounted on the Ford 550 chassis
- Armoured to the NATO STANAG 4569 level 3 that exceeds the CEN European B7 armour level
- Built with hollow cavity walls filled with special blast protective materials
- Installed with side armour that provides excellent protection against side load IEDs
- The firewall provides a second armoured wall to protect the driver and front passenger from a frontal attack
- The floor (over 1,134 kg) is also protected from blast and the payload, despite superior armouring



Dhruv- Executive



Viper



Dhruv - ATC



Drona MPV



# Financial highlights

