



empowered

Sunil Hi Tech
Engineers Limited

Annual Report
2006-07

Forward - looking Statement

In this Annual Report, we have disclosed forward-looking information to enable investors to comprehend our prospects and take informed investment decisions. This report and other statements -- written and oral -- that we periodically make contain forward-looking statements that set out anticipated results based on the management's plans and assumptions. We have tried wherever possible to identify such statements by using words such as 'anticipate', 'estimate', 'expects', 'projects', 'intends', 'plans', 'believes', and words of similar substance in connection with any discussion of future performance.

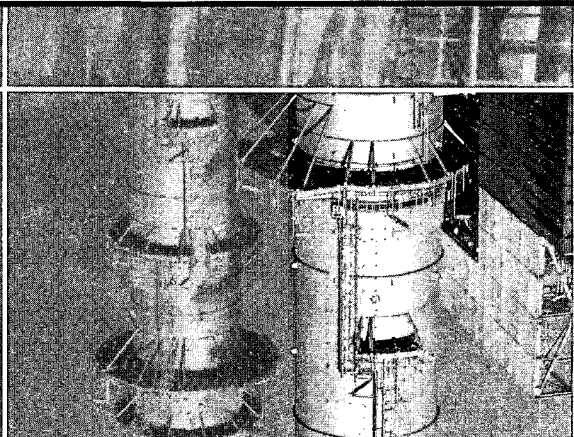
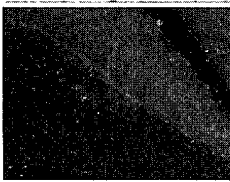
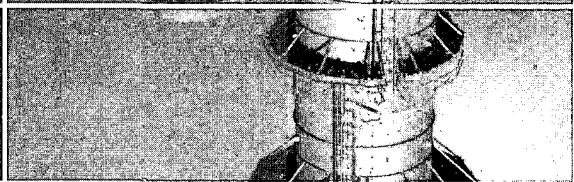
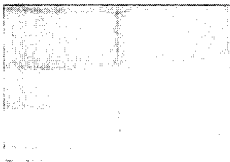

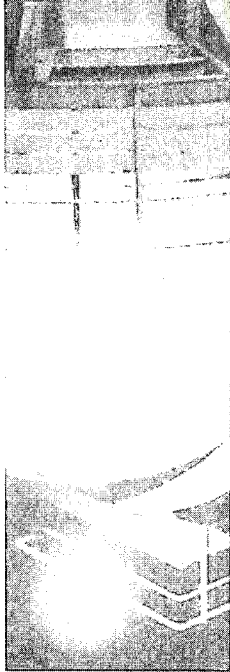
We cannot guarantee that these forward-looking statements will be realized, although we believe we have been prudent in making assumptions. The achievement of results is subject to risks, uncertainties, and even inaccurate assumptions. Should known or unknown risks or uncertainties materialize, or should underlying assumptions prove inaccurate, actual results could vary materially from those anticipated, estimated, or projected. Readers are requested to bear this in mind.

We undertake no obligation to publicly update any forward-looking statements, whether as a result of new information, future events or otherwise.

Report  junction.com

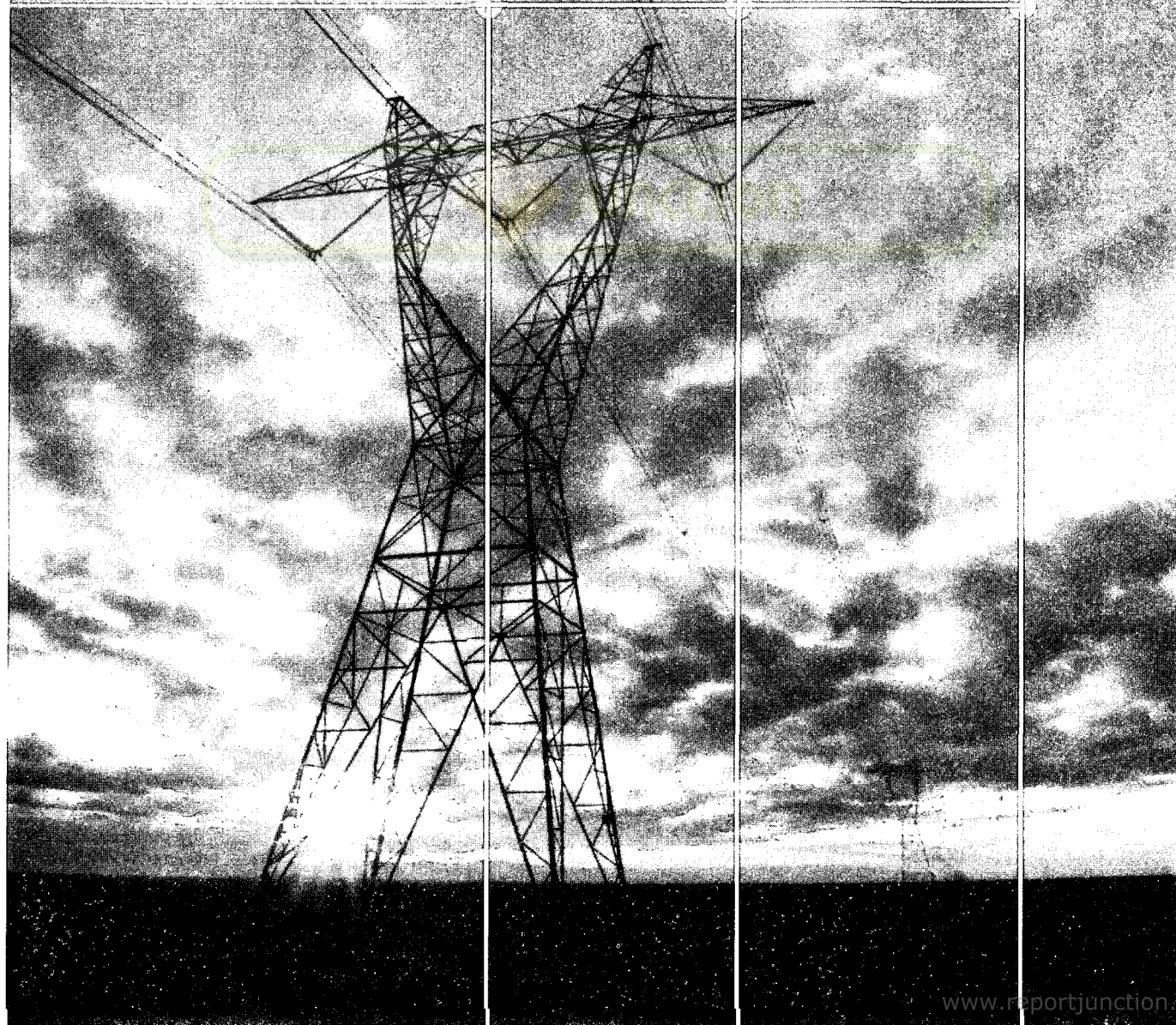
Contents

❖ Vision. Mission. Philosophy	❖ Highlights of 2006-07	❖ Key Financial Highlights	❖ Projects
❖ Clientele	❖ Chairman's Message	❖ Performance Empowered	❖ Vision Empowered
❖ People Empowered	❖ Structure Empowered	❖ Nation Empowered	❖ Management profiles
❖ Management's Discussion and Analysis	❖ Directors' Report	❖ Report on Corporate Governance	
❖ Auditor's Report	❖ Financial Statements		

				
				
				
				
				
			<p> The significance of solidarity rises far above and far ahead of anything in the landscape. From the structures that are built to the principles that are stood by, the consistent belief drives the path ahead. It's such a belief that guides thought. It's such a belief that provides the insight to ordinary sight. This is what creates the extra mile when the road ahead has ended. </p> <p> This is empowerment. </p>	
			<p> Power. Stability. Strength. </p>	

MAINTENANCE SERVICES - Annual Report 2015
www.reportjunction.com

Maintaining an
effective focus on
the ever-growing
requirements of the
power sector



An ISO 9001: 2000 company, Sunil Hi Tech Engineers Limited is a niche-player in the power sector. The company primarily provides services for setting up a power station and related services.

Sunil Hi Tech has made its presence felt in the power sector as well as in the electrical and steel sectors.

Sunil Hi Tech is engaged in the fabrication, erection, testing and commissioning of boilers and auxiliaries up to 500 MW, TG structures, bunkers, coal - handling plants, civil works for SG, TG areas in power plants in both the private and public sectors. Sunil Hi Tech is amongst the very few companies which have been able to maintain an effective focus on the ever growing requirements of the power sector.

Vision

To contribute to the development of power and process industries as well as related infrastructure areas.

To meet quality, price and schedule benchmarks and consistently satisfy our customers.

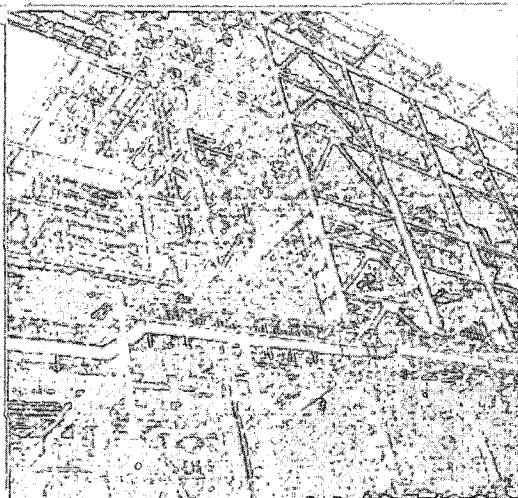
Mission

To develop, implement innovative construction and on-site implementation methods to meet the best industrial standards.

To continuously improve on cycle time reduction and modernization of construction methods applicable for the power, process and infrastructure industries.

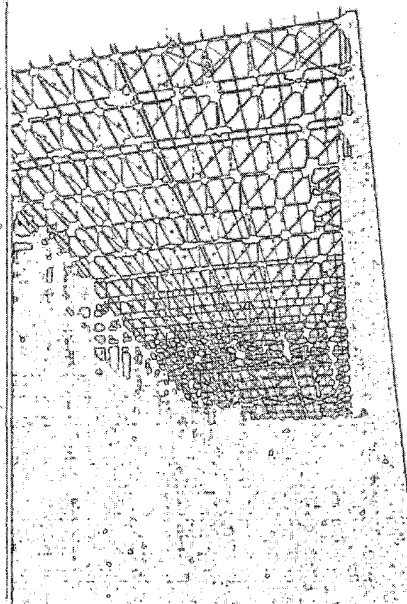
Philosophy

- o To bring in a high level of project execution skills, meet customer benchmarks, serve customers and satisfy them through timely completion of projects without compromising on quality
- o To improve on existing quality-systems in its operations
- o To achieve greater productivity and safety standards
- o To develop human resources and improve employee attitudes
- o To maintain good growth of net worth and build on the assets of the company
- o To be a market leader and a highly dependable service provider
- o To develop partnerships for growth and diversification



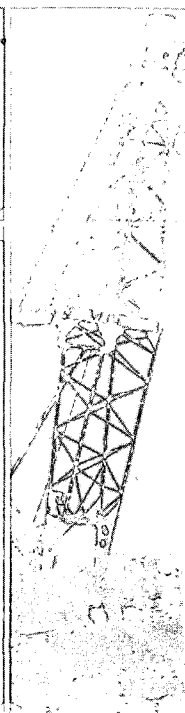
Highlights 2006-07

Report  Junction.com



- o In order to go up the value-chain, the company has ventured into the manufacturing of boiler pressure parts upto 500 MW via its subsidiary.
- o Manufacturing plant executed orders not only for the parent company but also for external clients.
- o Plant earned revenues of Rs. 50 million in four months.

- Commissioning three hydro-power plants for an American company.
- Commissioning about 17,500 MW through the current projects.
- Total order book of about Rs. 8,000 million as of June 2007.



- Approximately Rs. 70 million invested in manufacturing with plans to take revenue upto Rs. 1,000 million in three years' time.
- Orders worth Rs. 250 million in this segment.
- Forayed into the transmission and distribution sector with orders worth Rs. 1,500 million

- Achieved engineering growth through: 69,000 MT in fabrication, 75,000 MT in erection, 21,000 MT in boiler & auxiliary projects
- Addition of HR strength from 750 in 2006 to 1000 in 2007.
- Forayed into designing and detailing of structures.
- EPS up by more than 35 percent.

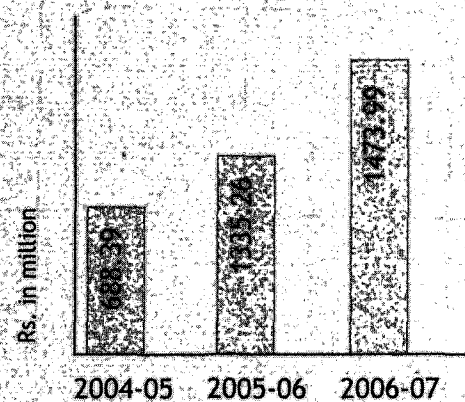
Key Financial Highlights

REPORT

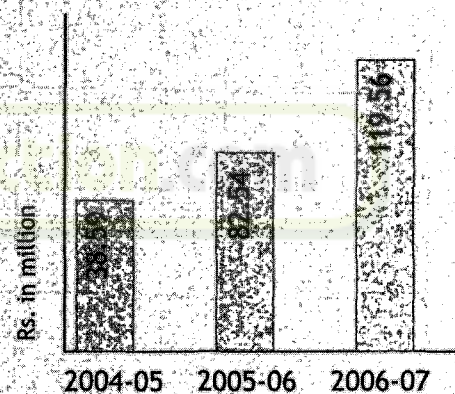


JUNCTION

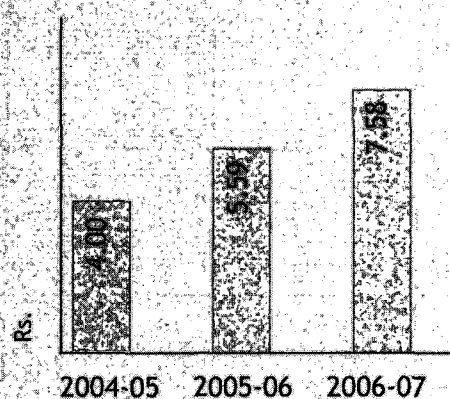
Total Income

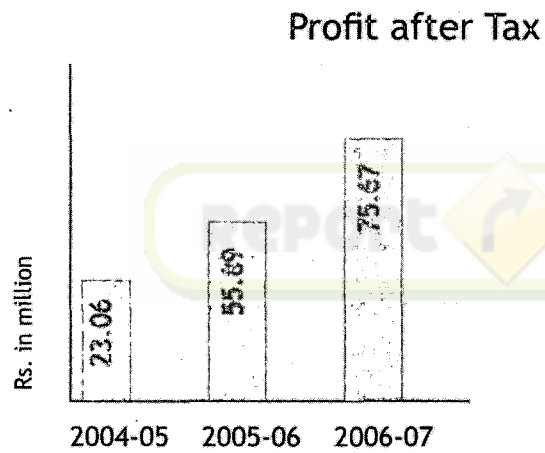
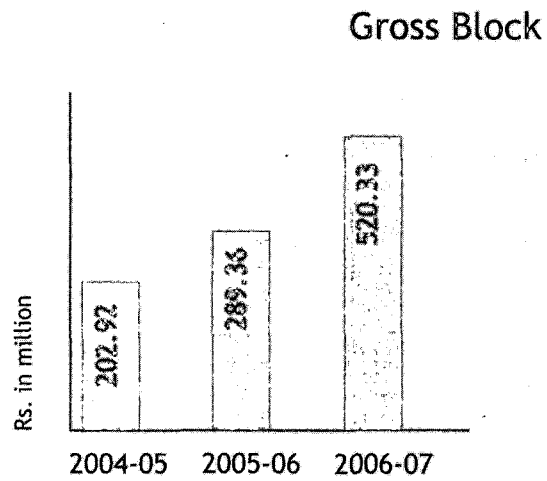


Profit before Tax

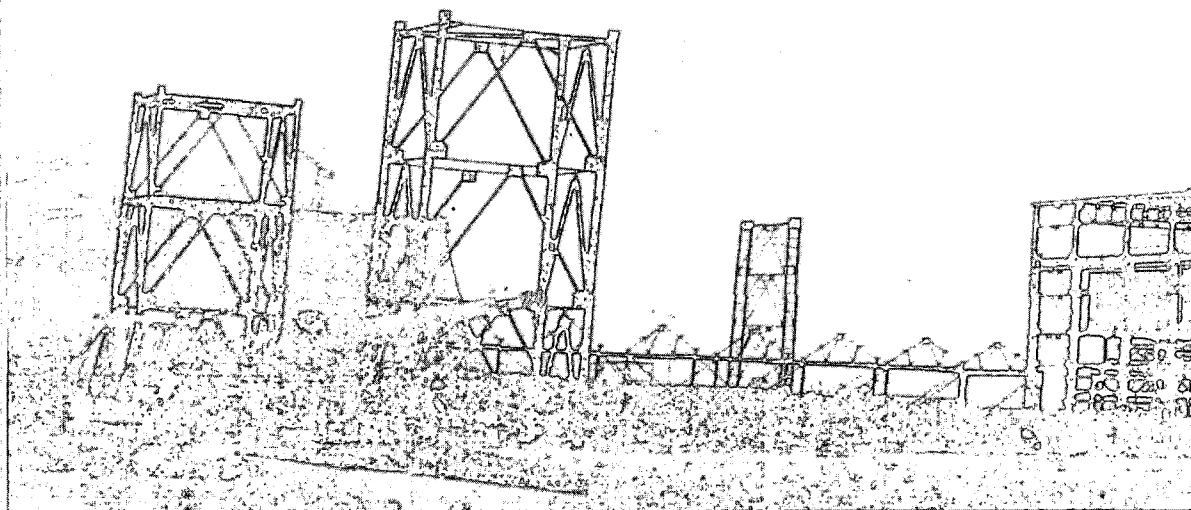


Earnings per Share





Projects Completed



MAHARASHTRA

- Khaparkheda: 210 MW - boiler and main plant structures.
- Chandrapur: 500 MW - main plant structures, boiler and auxiliaries.
- Parli: 250 MW - main plant structure, CHP, main water drainage system, boiler and auxiliaries.
- Paras: 250 MW - main plant structure, and fuel-oil handling system.

UTTAR PRADESH

- Rihand: 500 MW - boiler auxiliaries, miscellaneous structures and 250 Mtr. RCC chimney.
- Unchahar: 210 MW - boiler and auxiliaries.
- Gail-Pata: 2 X 80 - TPH HRSG.
- Parichha: 2 X 210 MW - boiler, auxiliaries, structures and fabrication.