



TOTAL CUSTOMER SATISFACTION



HIGHEST DOMESTIC MARKET SHARE



VAST GLOBAL REACH



PRODUCT EXCELLENCE

Differentiating  
through  
**Innovation**

## Contents

### 01 ↗ 15

#### Corporate Overview

Differentiating Through Innovation 01

A Differentiated Business Entity 02

The Innovation Edge 06

Financial Highlights 10

Message from the Chairman 12

Q&A with the Vice Chairman &

Managing Director 14

### 16 ↗ 77

#### Statutory Reports

Management Discussion & Analysis 16

Directors' Report 31

Corporate Governance Report 37

Report on CSR Activities/Initiatives 55

Business Responsibility Report 60

### 78 ↗ 204

#### Financial Statements

Standalone Financials 78

Consolidated Financials 141

#### Forward-looking statement

This report contains forward-looking statements, which may be identified by their use of words like 'plans', 'expects', 'will', 'anticipates', 'believes', 'intends', 'projects', 'estimates' or other words of similar meaning. All statements that address expectations of projections about the future, including but not limited to statements about the Company's strategy for growth, product development, market position, expenditures and financial results, are forward-looking statements. Forward-looking statements are based on certain assumptions and expectations of future events. The Company cannot guarantee that these assumptions and expectations are accurate or will be realised. The Company's actual results, performance or achievements could thus differ materially from those projected in any such forward-looking statements. The Company assumes no responsibility to publicly amend, modify or revise any forward-looking statements, on the basis of any subsequent developments, information or events. The Company has sourced the industry information from the publicly available resources and has not verified those information independently.



To view this report online or for any other relevant information please log on to [www.triveniturbines.com](http://www.triveniturbines.com)





# Differentiating through **Innovation**

Differentiating through Innovation lies at the core of our business growth strategy. At Triveni Turbines, being innovative goes beyond the Research and Development department, as we regard all aspects of our business a part of our Integrated Innovation framework. Right from the business structure to processes, network, product performance, service value maximisation to customers, all the functions are integrated for long-term value creation leading towards growth that is sustainable.

## A Differentiated **Business Entity**

**Triveni Turbines is one of the largest manufacturers of industrial steam turbines globally. The Company designs and manufactures steam turbines up to 100 MW, and delivers robust, reliable and efficient end-to-end solutions.**

Triveni Turbine Ltd. (TTL) is also one of the largest players globally in the Biomass segment, with ~ 20% market share over the past 5 years. The Company provides renewable power solutions specifically for Biomass, Independent Power Producers, Sugar & Process

Co-generation, Waste-to-Energy and District Heating. Its steam turbines are used in diverse industries, ranging from Sugar, Steel, Textiles, Chemical, Pulp & Paper, Petrochemicals, Fertilisers, Solvent Extraction, Metals, Palm Oil to Food Processing and more.





2

WORLD-CLASS MANUFACTURING FACILITIES

16

GLOBAL SERVICE CENTRES

12 GW+

POWER GENERATION CAPACITY CREATED GLOBALLY

18+

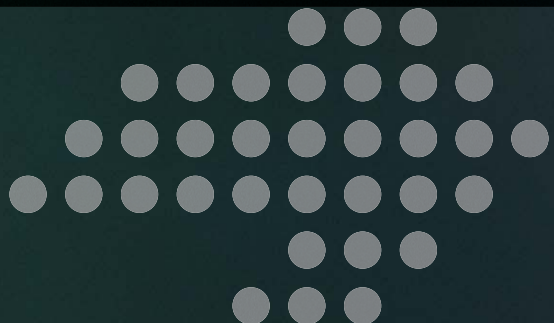
INDUSTRIES SERVED

70+

COUNTRIES OF INSTALLATION

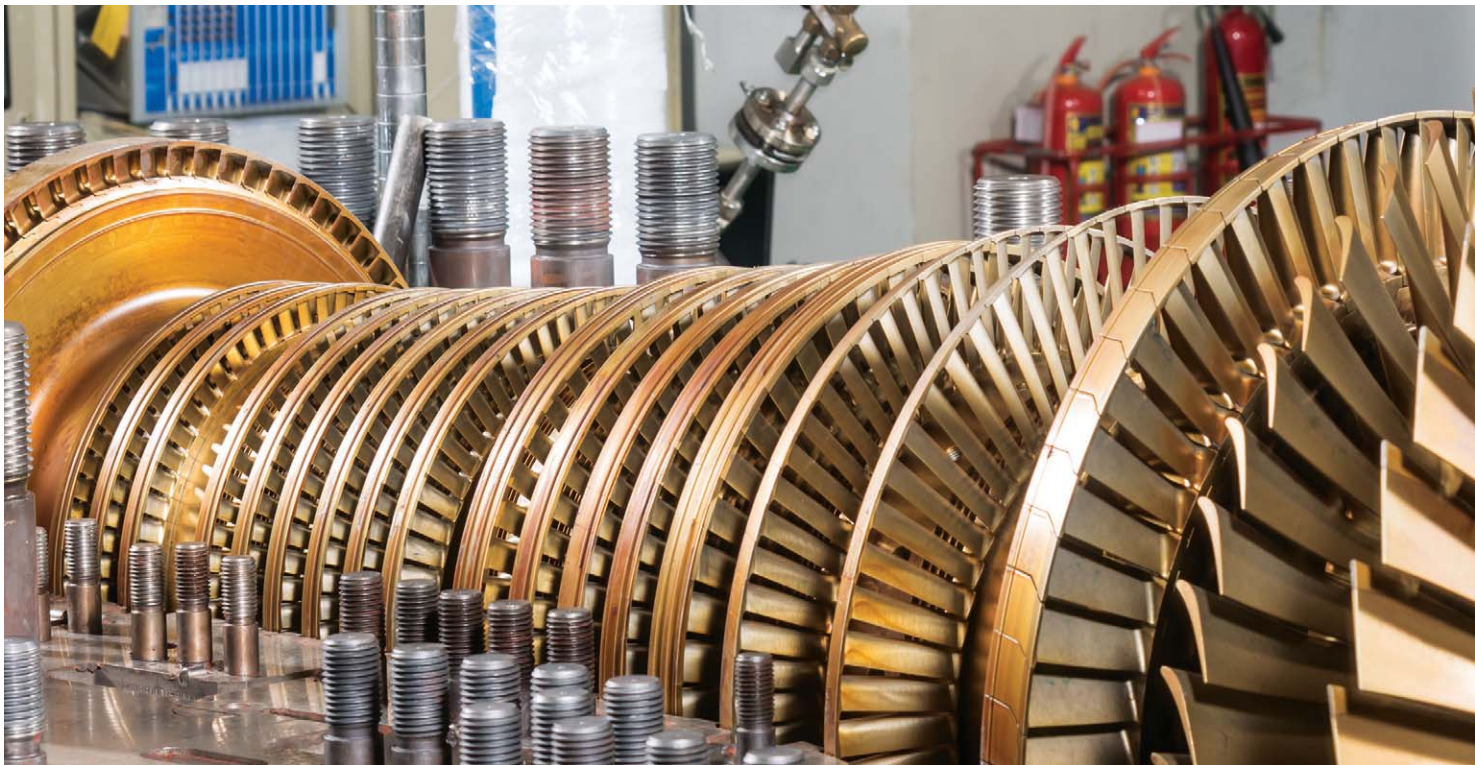
## Key Growth Drivers

- Global shift to renewable power source due to Government mandate to reduce the dependence on fossil fuel
- Demand for localised source of power rather than depending on power grid
- Continuous technological advancements to meet ever-growing customer demand for better efficiencies at lower operating costs
- Increasing demand of power due to rapidly growing population, urbanisation and industrialisation
- Wider product portfolio covering diverse application



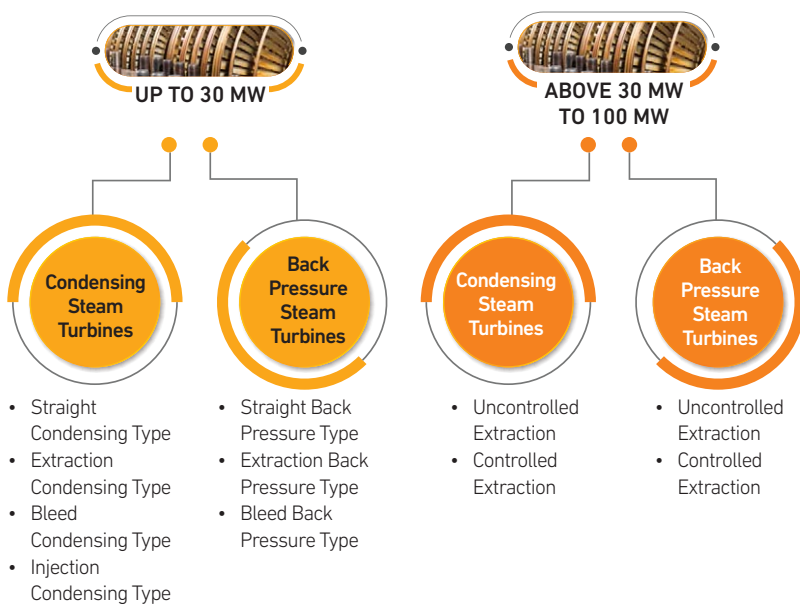


## Product & Service Portfolio



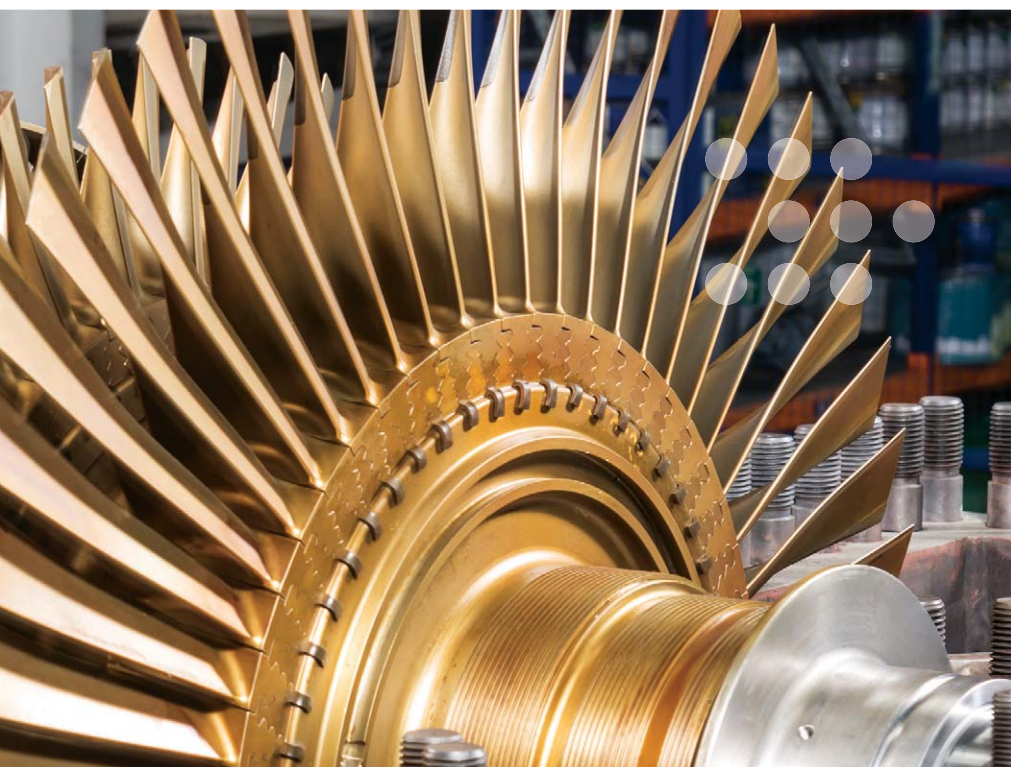
### Comprehensive Product Range

We offer robust back-pressure, condensing, extraction condensing, injection steam turbines up to 100 MW that work across a wide range of pressure and flow applications.



### Aftermarket Solutions

Responsible and responsive customer support is at the heart of our service solutions portfolio. We value our customers' trust and are always there for them, responding quickly and effectively to all their needs, round the clock. Our end-to-end holistic, diagnostic, predictive, and comprehensive solutions include both remote and on-site support, making us a complete service provider, addressing all aspects of turbine installation, commissioning, operation and maintenance. Our support services are available to our customers 24/7, helping them enhance the productivity and efficiencies of their equipment and their business. Our 360° Customised Service Portfolio is designed to complement every stage of the lifecycle of our customers' turbines. We provide both off-site support and on-site services.



## Global Growth Strategy

Our foray into international market has been not only to expand our growth globally but also to offset the effects of any downside in the domestic market. We have been successfully leveraging our core competency of offering innovative solutions with a cost advantage to the global customers for over a decade. With a presence in over 70 countries through more than 3,000 installations, we have established our brand across geographies and specific markets within those geographies. Territorial diversification protects us against regional volatility in demand, pricing and also enables us to concentrate on high-growth and better-margin areas. We are aggressively working on expanding our market reach as well as market penetration.



**3,000+**  
INSTALLATIONS GLOBALLY

**130+**  
COUNTRIES WITH ENQUIRIES

**5 GW+**  
OF INTERNATIONAL  
ENQUIRY PIPELINE

**51%**  
EXPORTS ORDER BOOKING



## The Innovation Edge

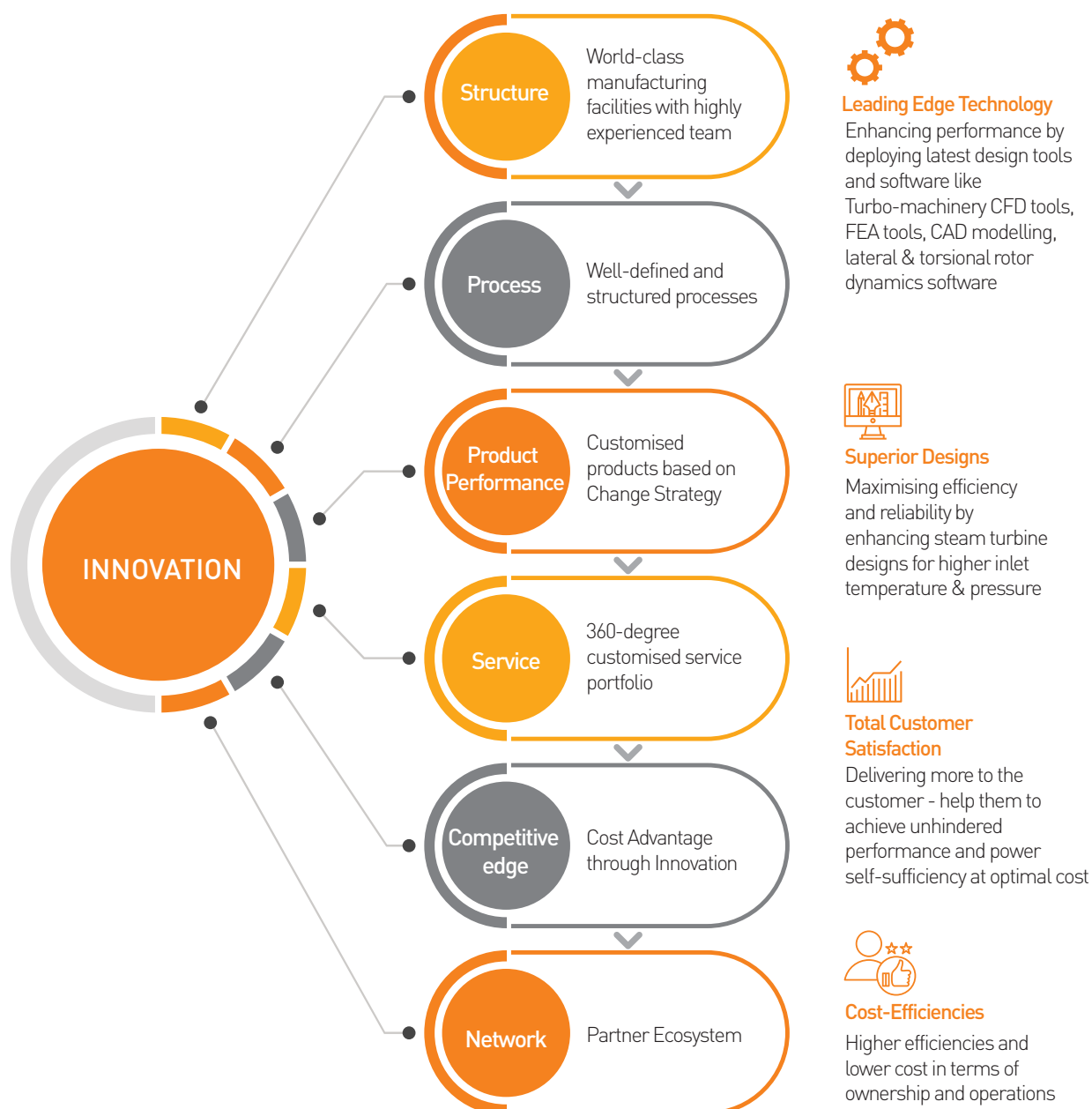


**We have been successful due to our continuous focus on integrating innovation in our business model. Effective implementation of our Innovation Framework helps us in delivering steam turbine solutions to our customers 24/7, helping them to enhance the productivity and efficiencies of their equipment and business.**

In today's highly competitive and dynamic marketplace, the customers demand higher efficiencies at lower costs both in terms of ownership and operations. We have been delivering highly customised steam turbines to our customers at an optimal cost while achieving unhindered performance and power self-sufficiency.



## The Innovation Framework



**We have two world-class manufacturing facilities equipped with latest machines and tools to manufacture robust and reliable steam turbines. Our highly experienced team works closely with the customers to understand the requirements and then manufacture products meeting international quality standards. Well-defined and structured processes and systems are in place to ensure zero defect products providing maximum uptime for the customer's plant operations.**

We have built a strong Partner Ecosystem which includes robust supply chain, starting from procurement process to delivery system. The essence of our proposition lies in our partnership approach and remains focussed on energising collective progress. We are also working very closely with world-renowned design houses and academia to develop advanced aero technology and cost competitive models, with much reduced carbon footprint for our diverse global customers. We have shorter development cycle due to an agile organisational structure which helps in responding to everchanging market requirements quickly.

At Triveni, we ensure that the latest equipment and technological know-how is accessible to our team in order to keep ahead of the competition in the innovation learning curve. In order to achieve this, we have a state-of-the-art Innovation and Learning Centre where our employees are trained on latest industrial trends.

