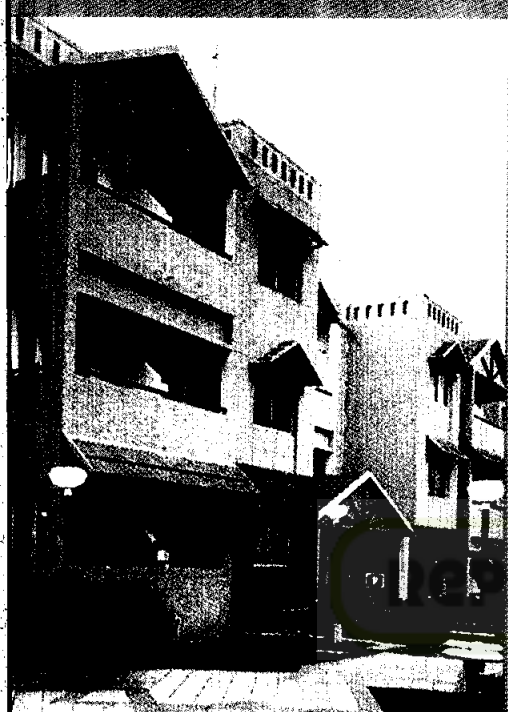
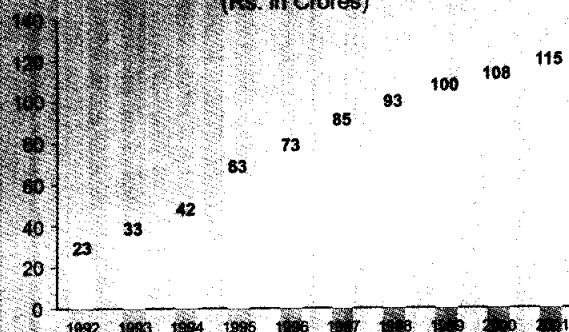
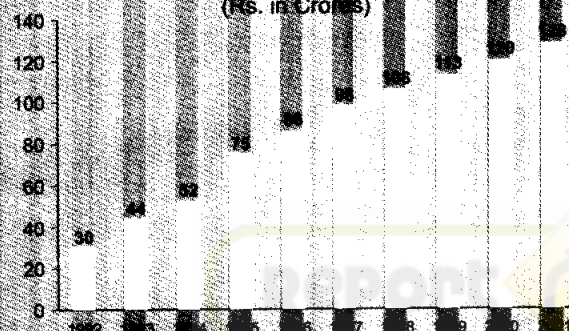


# Annual Report 2000-2001





## (Ten Years)

RESERVES & SURPLUS  
(Rs. in Crores)NET WORTH  
(Rs. in Crores)

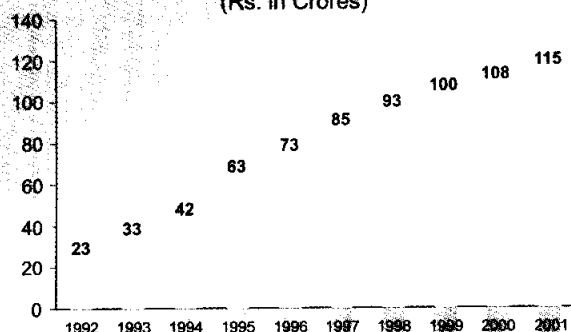
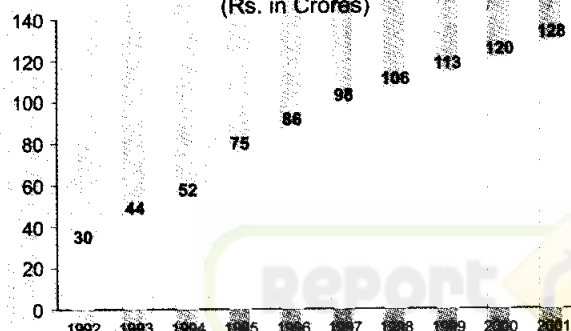
- 1 A.B. Hotels Limited (Radisson Hotels)
- 2 Hyundai Unitech Electrical Transmission Limited
- 3 Millennium Plaza Limited
- 4 Gurgaon Technology Park Limited
- 5 Unising Projects Limited
- 6 Unitech Prefab Limited
- 7 S.B. Developers Limited
- 8 Sarvamangalam Builders & Developers Limited
- 9 Unitech Country Club Limited
- 10 Unitech Infosolutions Limited
- 11 RHW Hotel Management Services Limited
- 12 RHW Management Schools Limited
- 13 City Maintenance Services Limited
- 14 Unitech Investments Limited
- 15 Unitech Builders Limited
- 16 Unitech Industries Limited
- 17 New India Construction Company Limited
- 18 Supernal Corrugation (India) Limited
- 19 Ruhi Construction Company Limited
- 20 Unitech Metals Limited
- 21 Mab Finlease Limited
- 22 Unichand Builders Pvt. Limited

## FINANCIAL SUMMARY FOR TEN YEARS

(Rupees in Crores)

	2001	2000	1999	1998	1997	1996	1995	1994	1993	1992
1. Share Capital	12.49	12.49	12.49	12.49	12.49	12.48	12.48	10.87	10.80	7.21
2. Reserves & Surplus	115.43	107.65	100.37	93.26	85.38	73.42	62.76	41.51	33.24	22.75
3. Total Income	185.12	222.40	192.61	233.22	272.38	257.59	166.67	119.80	100.86	83.07
4. Net Profit (before Tax)	12.37	14.26	16.58	19.37	27.13	25.08	18.13	13.50	10.64	8.30
5. Net Profit (after Tax)	8.62	10.51	12.03	13.37	17.63	16.48	12.88	9.80	6.99	5.70
6. Dividend :										
a) %	20	30	40	40	50	40	40	30	25	25
b) Amount	2.50	3.75	4.99	4.99	6.24	4.99	4.62	3.27	2.08	1.80
c) % of Net Profit	29	36	41	37	35	30	36	33	30	32
7. Fixed Assets	19.67	19.93	22.35	22.23	21.93	21.35	14.71	7.06	5.83	5.39
8. Net Current Assets	216.22	207.61	191.78	175.14	125.45	114.01	124.41	84.87	67.21	50.46
9. Investments	44.77	44.41	41.69	39.79	32.86	20.26	18.38	9.40	3.31	2.94
10. Secured Loans	101.99	113.46	101.95	93.78	60.20	51.22	67.34	37.75	26.65	24.56
11. Unsecured Loans	50.76	38.36	41.05	37.75	22.41	18.85	15.45	11.68	6.08	4.81

(Ten Years)

**RESERVES & SURPLUS**  
(Rs. in Crores)**NET WORTH**  
(Rs. in Crores)

- 1 A.B. Hotels Limited (Radisson Hotels)
- 2 Hyundai Unitech Electrical Transmission Limited
- 3 Millennium Plaza Limited
- 4 Gurgaon Technology Park Limited
- 5 Unising Projects Limited
- 6 Unitech Prefab Limited
- 7 S.B. Developers Limited
- 8 Sarvamangalam Builders & Developers Limited
- 9 Unitech Country Club Limited
- 10 Unitech Infosolutions Limited
- 11 RHW Hotel Management Services Limited
- 12 RHW Management Schools Limited
- 13 City Maintenance Services Limited
- 14 Unitech Investments Limited
- 15 Unitech Builders Limited
- 16 Unitech Industries Limited
- 17 New India Construction Company Limited
- 18 Supernal Corrugation (India) Limited
- 19 Ruhi Construction Company Limited
- 20 Unitech Metals Limited
- 21 Mab Finlease Limited
- 22 Unichand Builders Pvt. Limited

**FINANCIAL SUMMARY FOR TEN YEARS**

(Rupees in Crores)

	2001	2000	1999	1998	1997	1996	1995	1994	1993	1992
1. Share Capital	12.49	12.49	12.49	12.49	12.49	12.48	12.48	10.87	10.80	7.21
2. Reserves & Surplus	115.43	107.65	100.37	93.26	85.38	73.42	62.76	41.51	33.24	22.75
3. Total Income	185.12	222.40	192.61	233.22	272.38	257.59	166.67	119.80	100.86	83.07
4. Net Profit (before Tax)	12.37	14.26	16.58	19.37	27.13	25.08	18.13	13.50	10.64	8.30
5. Net Profit (after Tax)	8.62	10.51	12.03	13.37	17.63	16.48	12.88	9.80	6.99	5.70
6. Dividend :										
a) %	20	30	40	40	50	40	40	30	25	25
b) Amount	2.50	3.75	4.99	4.99	6.24	4.99	4.62	3.27	2.08	1.80
c) % of Net Profit	29	36	41	37	35	30	36	33	30	32
7. Fixed Assets	19.67	19.93	22.35	22.23	21.93	21.35	14.71	7.06	5.83	5.39
8. Net Current Assets	216.22	207.61	191.78	175.14	125.45	114.01	124.41	84.87	67.21	50.46
9. Investments	44.77	44.41	41.69	39.79	32.86	20.26	18.38	9.40	3.31	2.94
10. Secured Loans	101.99	113.46	101.95	93.78	60.20	51.22	67.34	37.75	26.65	24.56
11. Unsecured Loans	50.76	38.36	41.05	37.75	22.41	18.85	15.45	11.68	6.08	4.81



# Umbrella

Umbrella Group, Inc. offers a wide range of services, including, hi-rise construction, schools and universities, and many more. Under its umbrella, it today offers Hotel Management & Allied Services, Services, Technology Parks, Transmission Lines, Infosolutions, Schools, Ready-Mix Concrete & Concrete Blocks, the list is always growing.

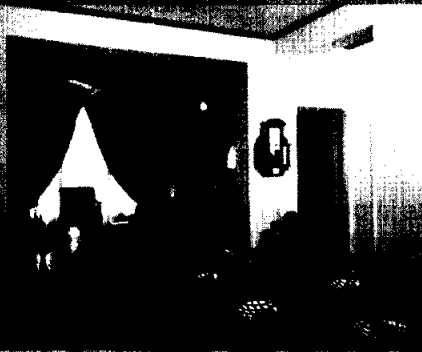


Report Junction

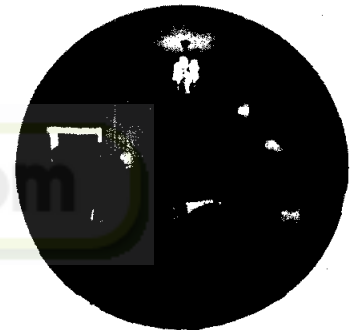
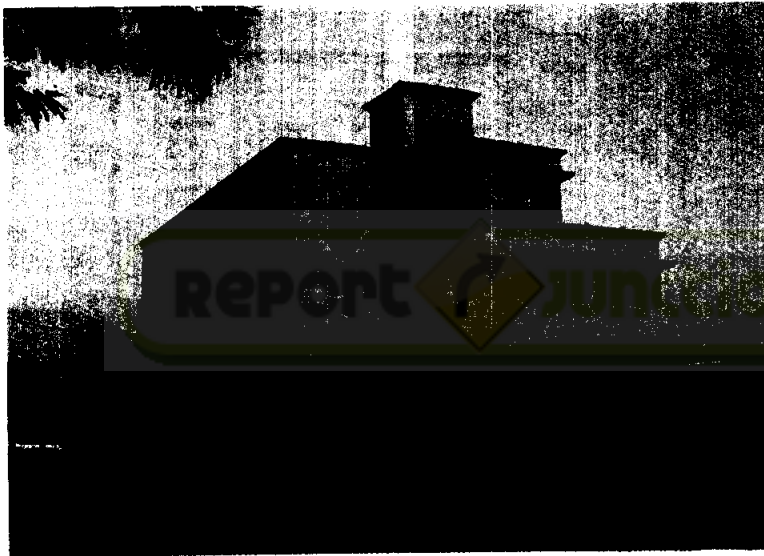
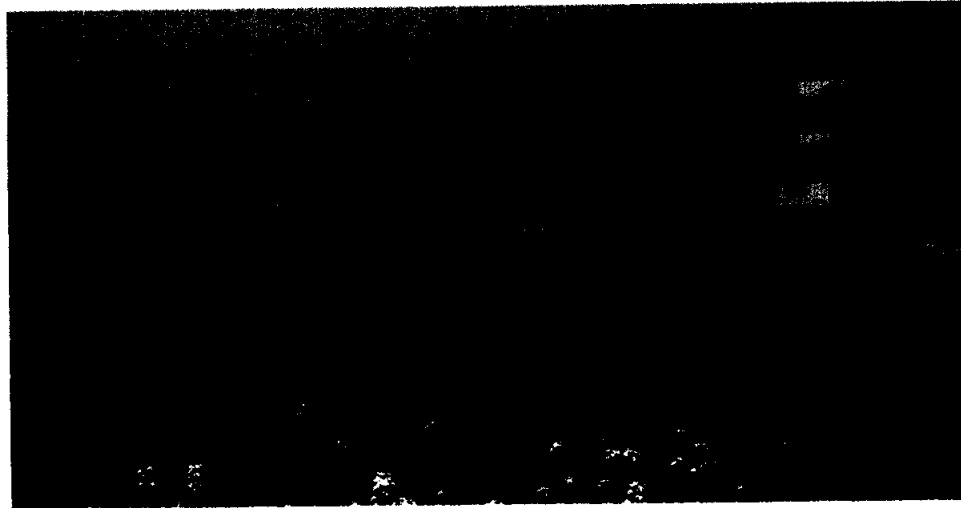
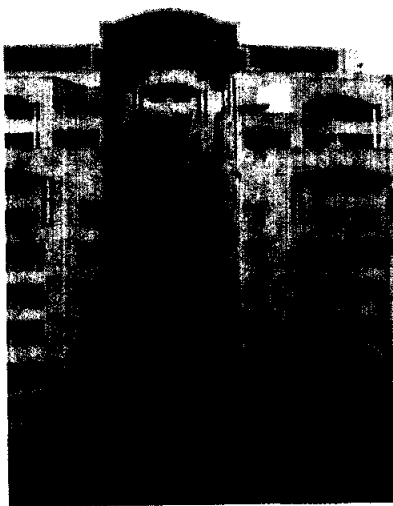
Unitech Limited, well known for the creation of exquisite, long-lasting, hi-rise buildings for offices and residences alike, has cared to diversify. Under its umbrella, it today offers Hotel Management & Allied Technical Services, Technology Parks, Transmission Lines, Infosolutions, Schools, Ready-Mix Concrete & Concrete Blocks, the list is always growing.



Report  junction.com



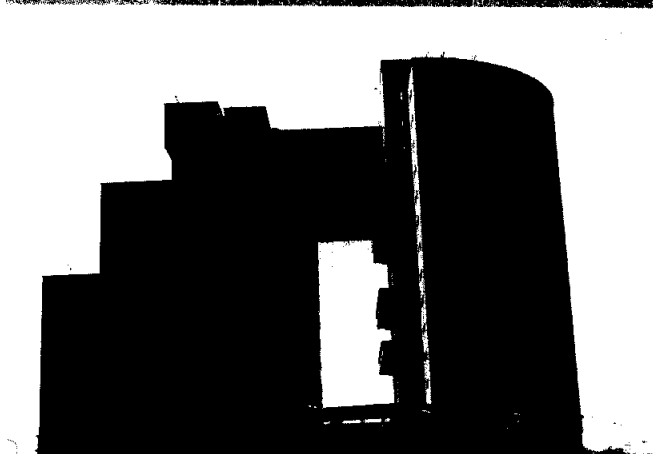




# UNITECH

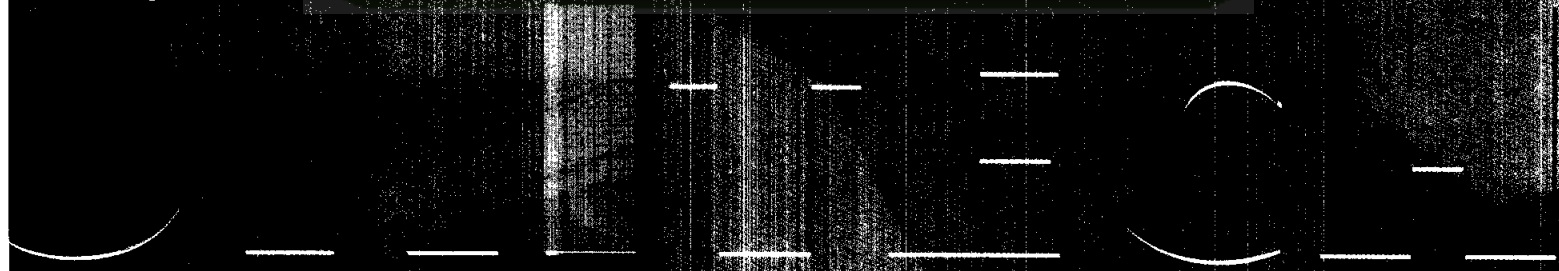
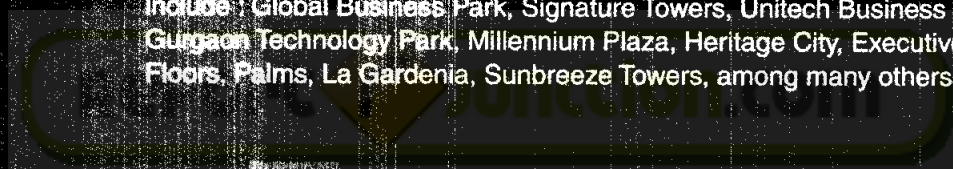
**No compromise**

Unitech believes in providing total quality. Only the best raw materials are used, stringent checks of international standards are made at every step, world-class ERP systems have been implemented, Total Quality Management practices are utilised, and the professional teams are highly-skilled... all of them embodying the United Unitech Credo — **No compromise!**



Impressive

Look at the facade of any Unitech structure... and you are immediately inspired... your very being is uplifted. You look up where the roof touches the sky, and you can only exclaim in wonder! Some of our prized projects include: Global Business Park, Signature Towers, Unitech Business Park, Gurgaon Technology Park, Millennium Plaza, Heritage City, Executive Floors, Palms, La Gardenia, Sunbreeze Towers, among many others.

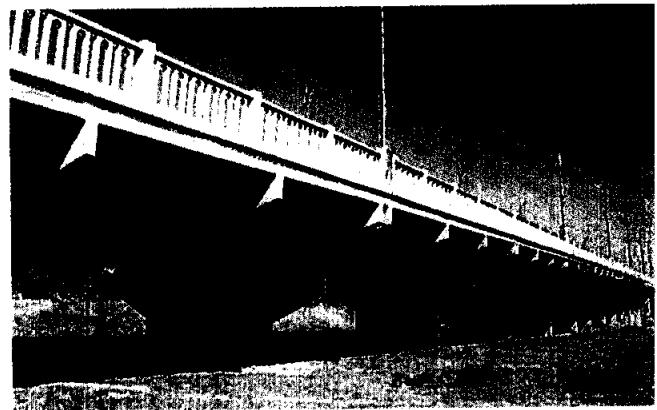


## Technology

Having executed projects all over India and in several other countries, Unitech achieves excellence with state-of-the-art technologies. On par with the best builders the world over, our technical expertise has enabled the creation of many a marvel in engineering, enthralling one and all.

# UNITECH

Report  junction.com





Enduring

*Built to last several lifetimes and more!* That's the promise behind every one of our creations. Aesthetic residential apartments, Corporate Parks with the most modern amenities, magnificent technology parks, beautiful expressways, smooth highways, powerful sub-stations, superbly executed airports, all bear the indelible stamp of Unitech endurance.



**Cost-effective**

While placing paramount importance on quality and aesthetics, Unitech has also developed an exclusive talent... one of being remarkably cost-conscious. Possessing unique insights in the building industry, we source raw materials at extremely competitive rates, while never compromising on quality. This provides exceptional value-for-money to all our customers, unmatched by our competition.

# UNITECH

